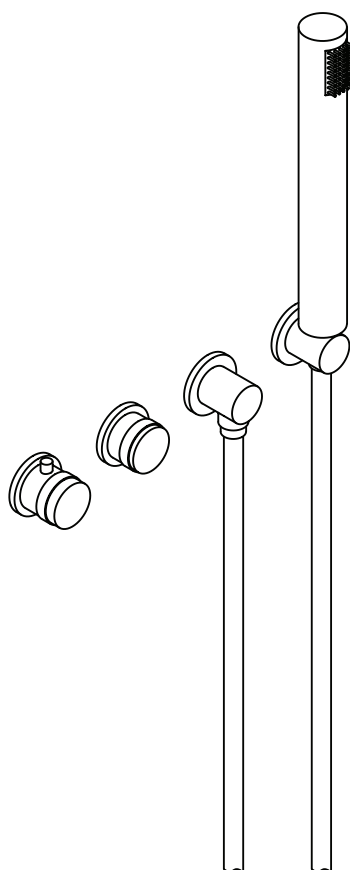
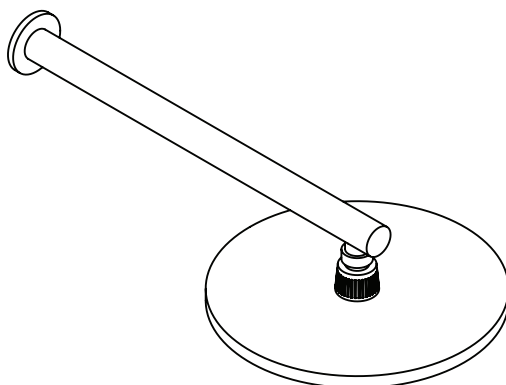


URBAN

SJS300/SJS301

THERMOSTATIC SHOWER WITH
HANDHELD SHOWER



EN
INSTALLATION
AND CARE GUIDE

Please retain for future reference

LUSO

INTRODUCTION

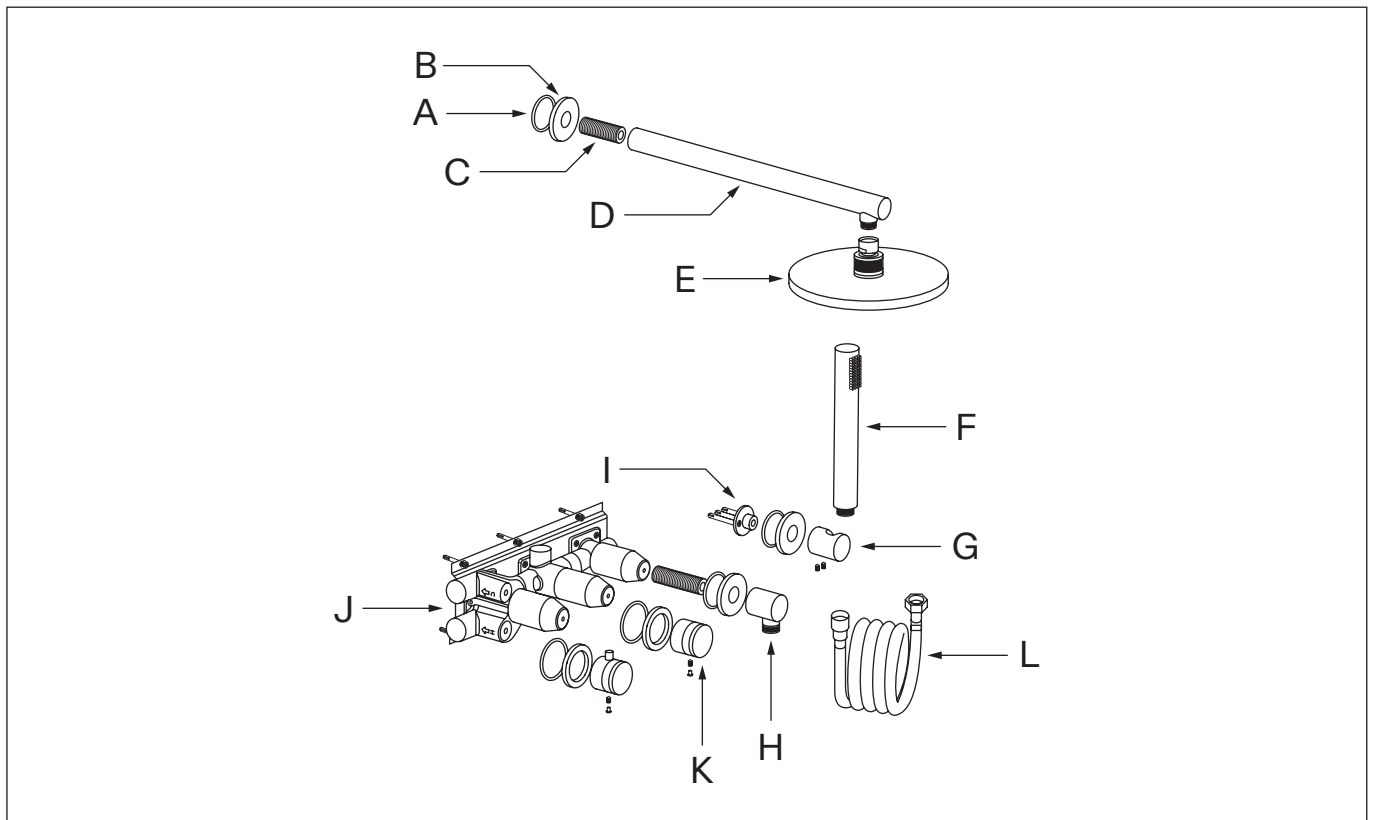
Thank you for purchasing the Urban Thermostatic Shower With Handheld Shower.

Please read this guide carefully before installing, using and cleaning this product, and retain it for future reference. Please also note that this shower has been fully tested before being dispatched, which may mean there is water residue on some of the parts.

If you have any queries in relation to this product or guide, please contact our Customer Service team on 020 3370 4057.

PRODUCT KIT

A	O Ring (x5)	G	Shower Bracket
B	Baseplate (x5)	H	Elbow
C	Connector (x2)	I	Flange
D	Shower Arm	J	Valve
E	Shower Head	K	Lever (x2)
F	Hand Shower	L	Shower Hose

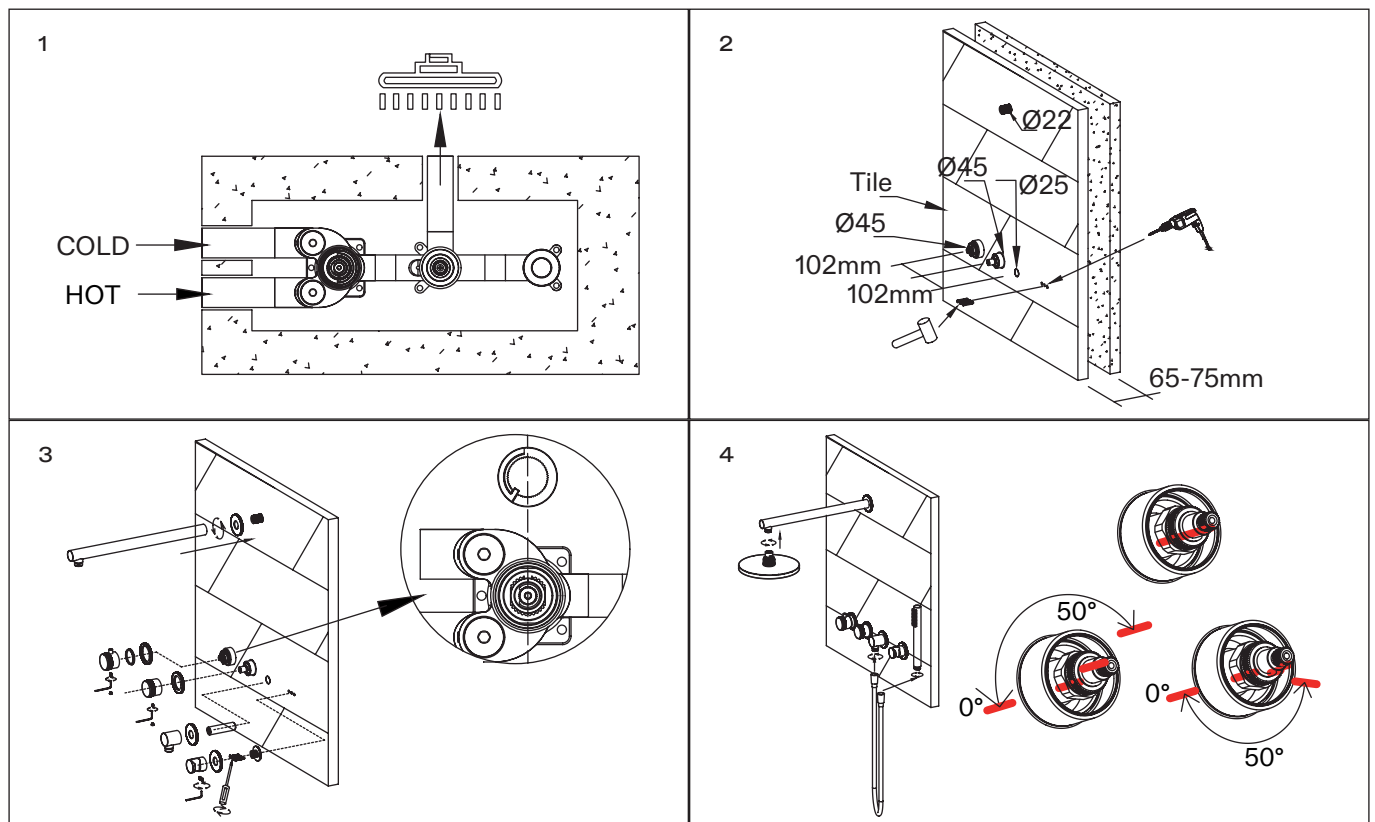


INSTALLATION STEPS

Before installation, please note that this shower is designed for wall mounting only, and we recommend that it is installed by a fully qualified plumber. It is suitable for use on all boiler systems including pumped, gravity and combination boilers with a minimum operating pressure of 0.5 bar and a maximum pressure of 8 bar.

Please also note that failure to flush your plumbing system as part of the installation process will void the product guarantee. In addition, you must fully test the product before tiling and/or plastering, etc as Lusso will not be held responsible for any costs involved in the removal of the shower if you find there is a fault.

- 1 Please refer to figure 1 for the position of the water inlets.
- 2 Prepare an opening in the wall where the valve will be installed. The opening depth should be between 55-65mm.
- 3 Assemble the components as shown in figure 3, then check for water leaks.
- 4 Connect the handheld shower hose, then connect the handheld showerhead and place it onto the holder. Finally, install the main shower head to complete the installation. Please note that the thermostatic valve core has a red marking line that must be correctly aligned. Where properly installed, it can be rotated clockwise by >50 degrees to return to its original position, and rotated counterclockwise by >50 degrees.



TROUBLESHOOTING

Why is the shower producing hot water when cold is selected, and vice versa?

It's likely that the hot and cold pipes have not been connected the right way around - please check and amend.

There is a leak from the shower lever - what should I do?

In this instance, the cartridge may have become loose during installation. To tighten it, firstly turn off the water mains then remove the lever, sleeve and baseplate. Next, tighten the cartridge fixing nut with an adjustable spanner to create a seal and stop the leak. Once complete, reassemble the parts and turn the mains back on.

What could cause a fluctuating flow rate or low/no flow from the valve?

This may be due to either a blockage in the system or incorrect operating conditions.

How do I replace the cartridge?

Turn off the water mains then remove the lever, sleeve and baseplate. Next, remove the cartridge fixing nut with an adjustable spanner, remove the cartridge and replace it with a new one. Once complete, reassemble the parts and turn the mains back on.

CARE INSTRUCTIONS

To clean and maintain the flawless finish of this product, please follow the below instructions. Improper maintenance will void your product guarantee.

✓ Clean with a damp cloth.

✗ Do not use acidic cleansers.

✗ Do not use abrasive cleansers or cloths.

Go to Lusso.com to activate your guarantee.

LUSO

Customer Care: 020 3370 4057

International: +44 20 3370 4057