

Maintenance and Care

When cleaning your toilet, wash it with mild, soapy water, rinse thoroughly with clear water and dry with a soft cloth. Avoid detergents, disinfectants, or cleaning products in aerosol cans.

NEVER use abrasive scouring powders or abrasive pads on your toilet seat.

Some bathroom chemicals and cosmetics may damage the seat's finish.

WARNING: Do not use in-tank cleaners.

Products containing chlorine (calcium hypochlorite) can seriously damage fittings in the tank.

This damage can cause leakage and property damage.

We shall not be responsible or liable for any tank fitting damage caused by the use of cleaners containing chlorine (calcium hypochlorite).

LUSSO

Close-Coupled Toilet (WT524) Installation & Maintenance Guide

Important Information

Please read installation and maintenance instructions thoroughly.
Inspect your toilets for any noticeable damage before installation.
Products in this specification manual must by regulation be installed by licensed and registered plumbers.
The manufacturer/distributor reserves the right to vary specifications from their range without prior notification.
This is a general installation guide - there are many factors that are involved that can alter the installation method. The standards in your respective country must be adhered to by licensed and registered plumbers.

Specification

| | |
|--------------------|---|
| Material | Pan & Cistern: Glazed Porcelain Seat: Soft closing - UF |
| Finish | Matte White |
| Installation | Floor mounted |
| Set-in | P-trap 180mm |
| Temperature rating | Maximum continuous working temperature 75°C. If the water temperature exceeds 75°C, an approved tempering valve must be fitted. |
| Standards | CE approved, Full flush: 6.0L, half flush: 3.0L. |

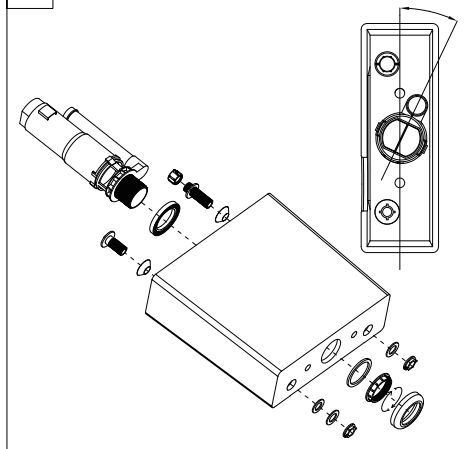
Installation

1. Combine all the parts and turn the flush valve as per the diagram, and make sure it won't block the holes.
2. When fitting the cistern to the pan take care to ensure the gasket is properly aligned in the gasket location.
FAILING TO DO SO COULD RESULT IN LEAKAGE.
3. Measure the distance for the anchor screws, fix them on the floor and reserve a water inlet valve position as per the diagram.
4. Insert the pollution pipe into the drain hole and adjust the anchor screws to make sure the bottom of toilet pan is corresponding and tighten it.
Align the P-trap pipe with the drain pipe, push and align the toilet to the wall.
5. Use a braided tube connecting the angle valve with the water inlet valve, connect the water inlet valve with the flush valve.
6. Insert the rubber plug as per diagram and put the fixing seat and gasket, tighten the screws, and put on the decorative cover. Install the toilet seat and cover.

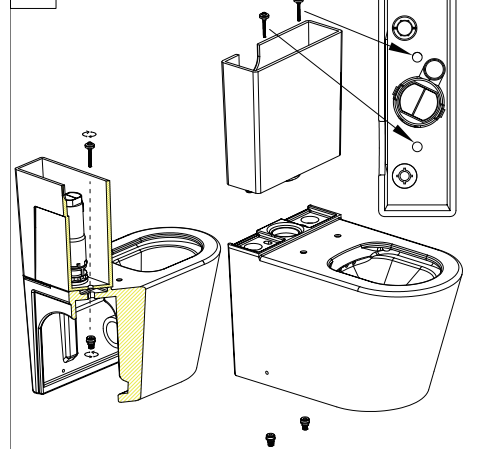
Fit the push button to the cistern lid using the plastic fixing nut.
Ensure the pins make contact with the flush buttons on the flush valve.
To adjust the length of the rods turn the nut clockwise and anti-clockwise.
Check that if the button press is normal.

PLEASE MAKE SURE YOU FULLY TEST YOUR PRODUCT BEFORE TILING ETC.
WE WILL NOT BE RESPONSIBLE FOR ANY COSTS INVOLVED IN REMOVAL OF
THE TOILET IF YOU FIND THERE IS A FAULT.

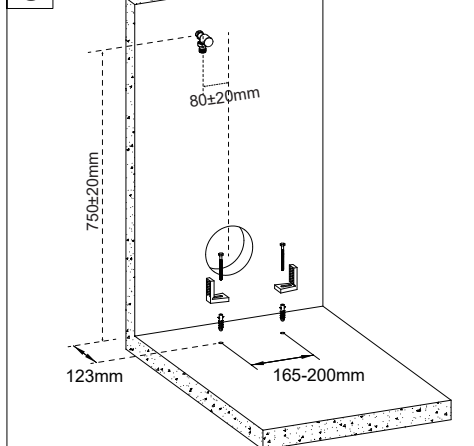
1



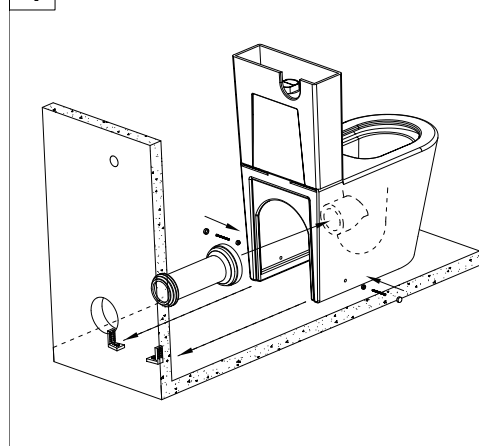
2



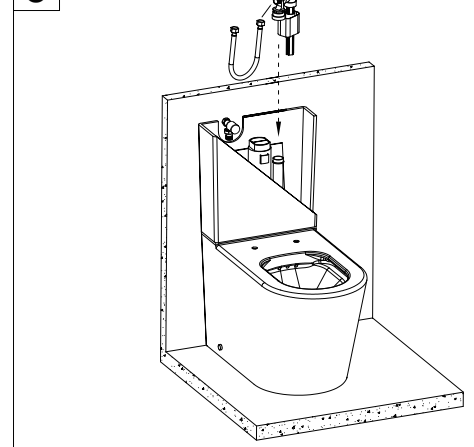
3



4



5



6

