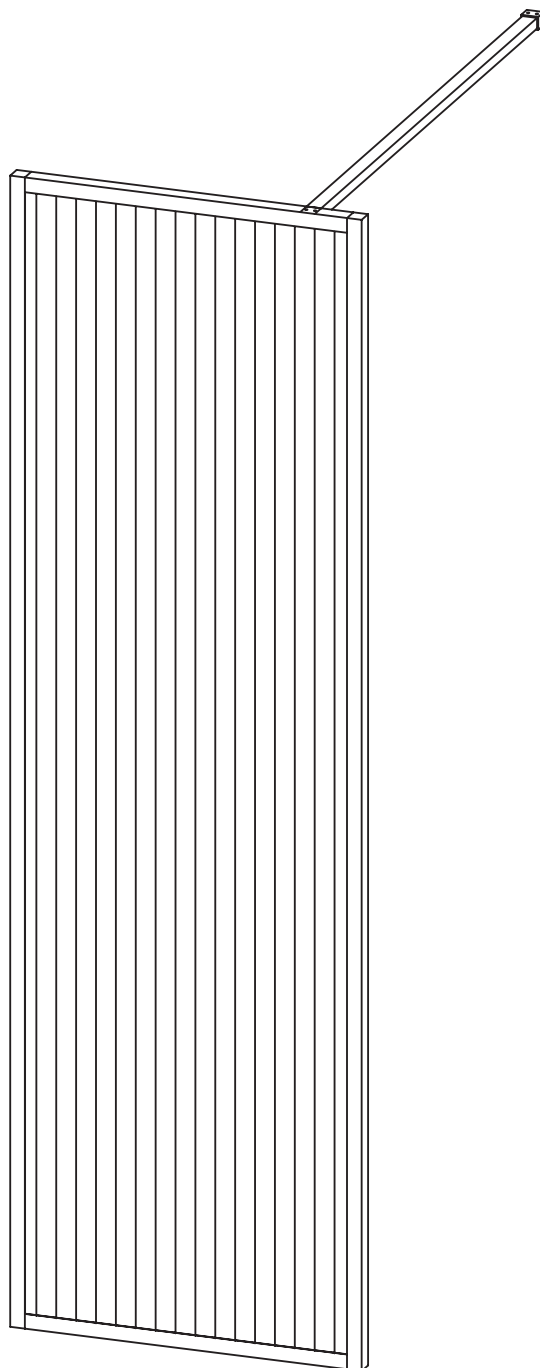


OPULENCE

SHOWER SCREEN



EN
INSTALLATION
AND CARE GUIDE

Please retain for future reference

LUSO

INTRODUCTION

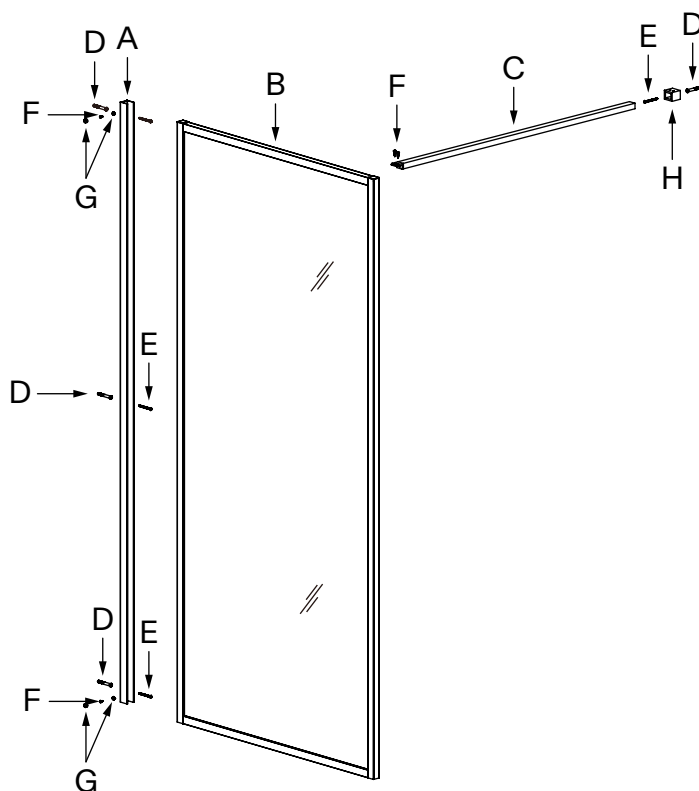
Thank you for purchasing the Opulence Shower Screen.

Please read this guide carefully before installing, using and cleaning this product, and retain it for future reference.

If you have any queries in relation to this product or guide, please contact our Customer Service team on 020 3370 4057.

PRODUCT KIT

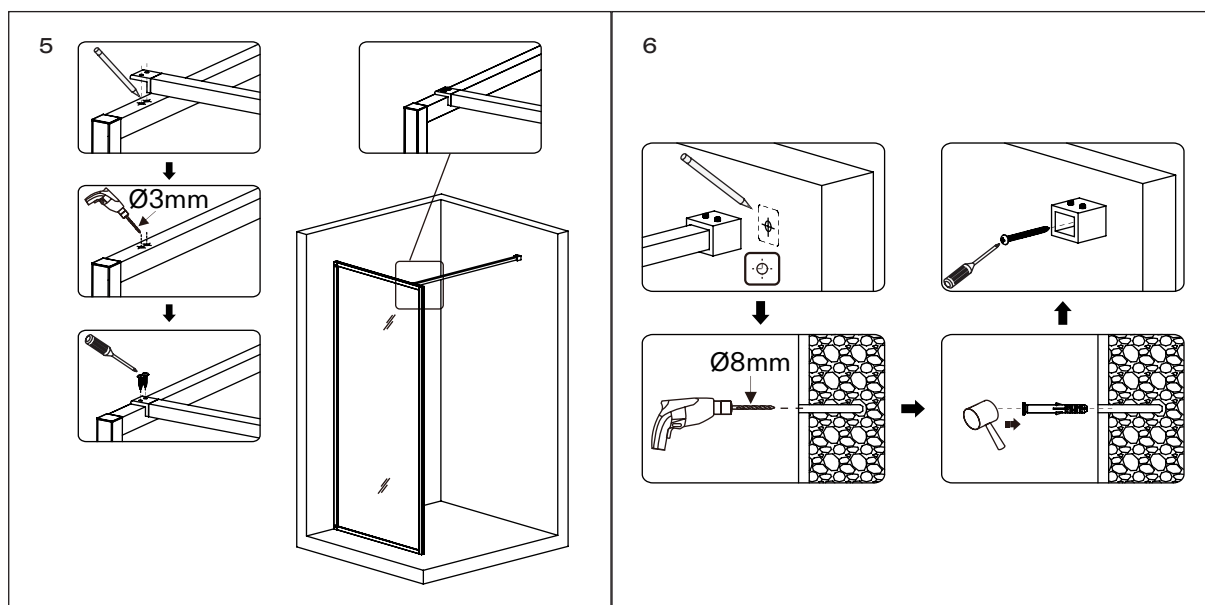
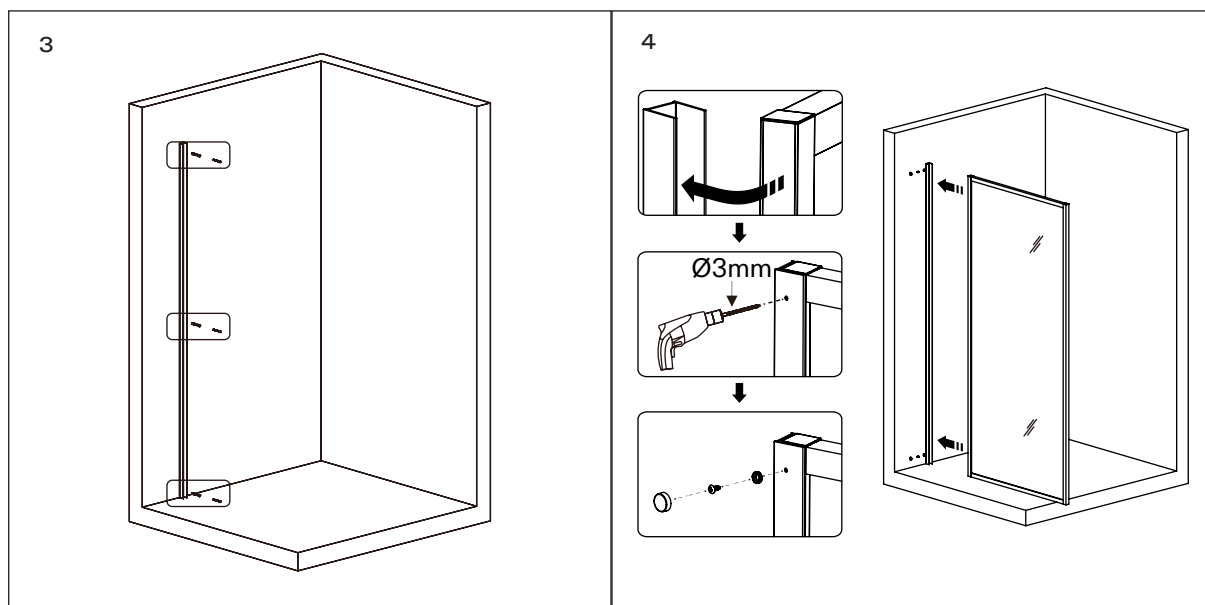
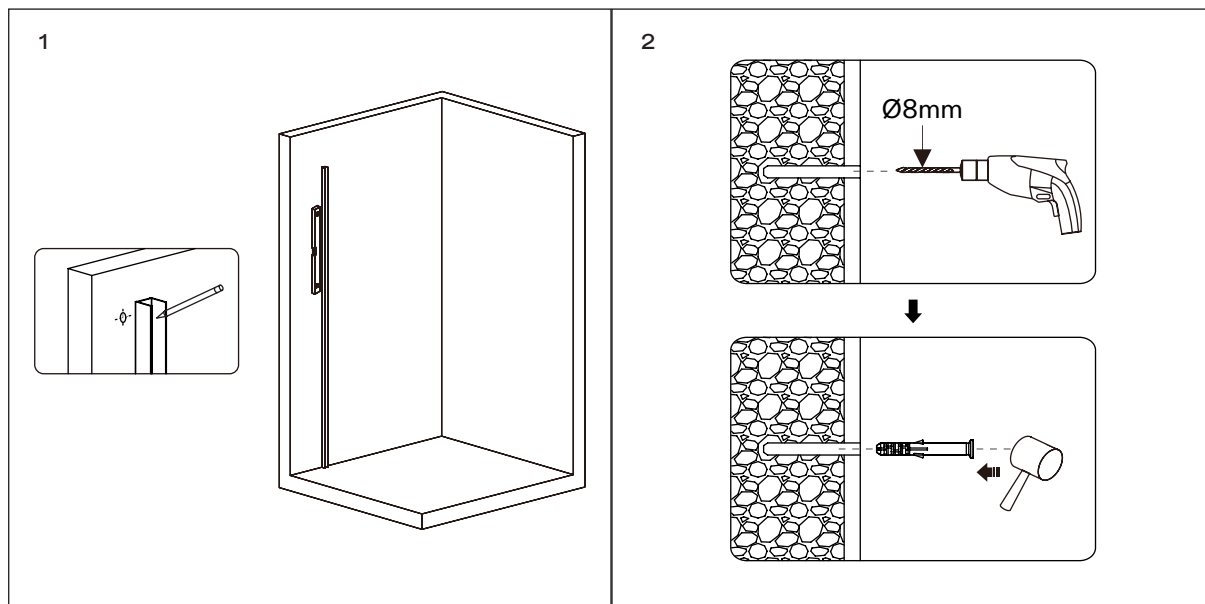
| | | | |
|----------|----------------------------|----------|-------------------------------|
| A | Wall Profile | F | M4 × 12mm Screws (x4) |
| B | Shower Screen | G | Screw Cover Sets (x2) |
| C | Bracing Bar | H | Bracing Bracket (Screen Side) |
| D | Wall Plugs (x4) | I | Bracing Bracket (Wall Side) |
| E | M5 × 60mm Wall Screws (x4) | | |



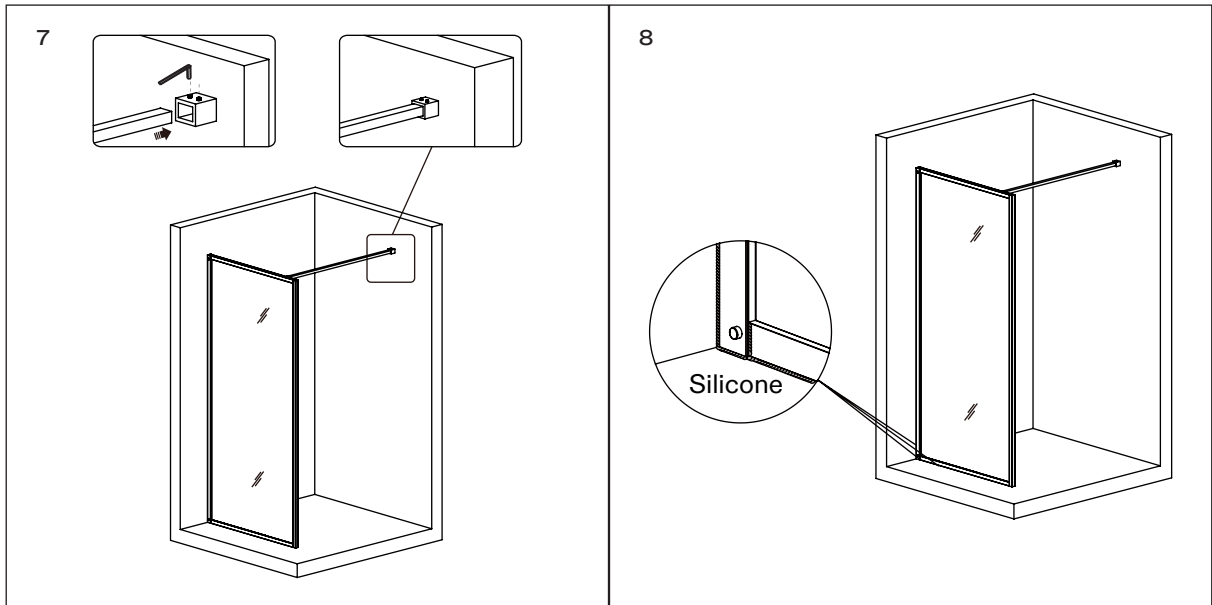
INSTALLATION STEPS

For best results, we recommend that this shower screen is installed by a professional tradesperson in compliance with relevant building regulations.

- 1** Hold the wall profile in position against the installation wall, using a spirit level to ensure that it's properly aligned. Next, use the predrilled holes in the profile to mark the position of the three required drill holes.
- 2** Put the profile to one side. Drill the required holes into the wall using an electric drill with an 8mm drill bit, then insert the provided wall plugs into the holes.
- 3** Run a fine line of clear silicone down the centre of the back of the profile to create a watertight seal, and affix the profile to the wall using the provided wall screws.
- 4** Position the shower screen into the installed wall profile. Next, use an electric drill with a 3mm drill bit to drill two holes through the wall profile and into the shower screen - please refer to figure X for the positions of the holes. Secure the shower screen to the wall profile with two 12mm screws and screw cover sets.
- 5** As shown in figure X, use the predrilled holes in the bracing bracket to mark the position of the required drilling holes on the shower screen frame. Put the bracing bracket to one side, create the holes using a 3mm drill bit, then attach the bracing bracket to the top of the shower screen frame and fix it into place with two 12mm screws.
- 6** Mark the position of the bracing bracket onto the wall, then mark the position of the required drilling hole according to the predrilled hole in the bracket. Next, create the hole with an 8mm drill bit, insert a wall plug, and screw the bracket into position using the remaining wall screw.
- 7** Insert the bracing bar into the bracing bracket on the wall, and tighten the bracket grub screws with the allen key to hold the bracket in position.
- 8** Finally, run a fine line of clear silicone on the outside of the shower between the screen and the shower tray to create a watertight seal. Leave the silicone to dry for 24 hours before using the shower screen and/or allowing it to come into contact with water.



CONTINUED OVERLEAF



CARE INSTRUCTIONS

To clean and maintain the flawless finish of this product, please follow the below instructions. Improper maintenance will void your product guarantee.

✓ Clean with a glass cleaner and/or neutral detergent.

✓ Dry with a soft cloth.

✗ Do not use acidic cleansers.

✗ Do not use abrasive cleansers or cloths.

Go to Lusso.com to activate your guarantee.

LUSO

Customer Care: 020 3370 4057

International: +44 20 3370 4057