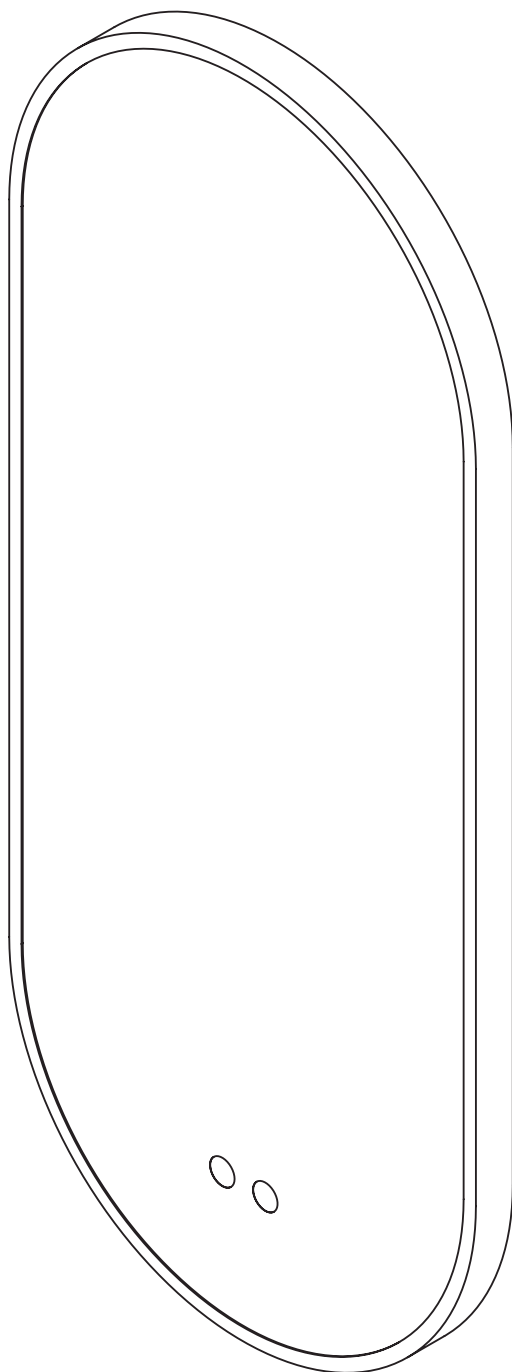


LED MIRRORS



EN
INSTALLATION
AND CARE GUIDE

Please retain for future reference

LUSO

INTRODUCTION

Thank you for purchasing from the Lusso LED mirror collection.

Please read this guide carefully before installing, using and cleaning this mirror, and retain it for future reference.

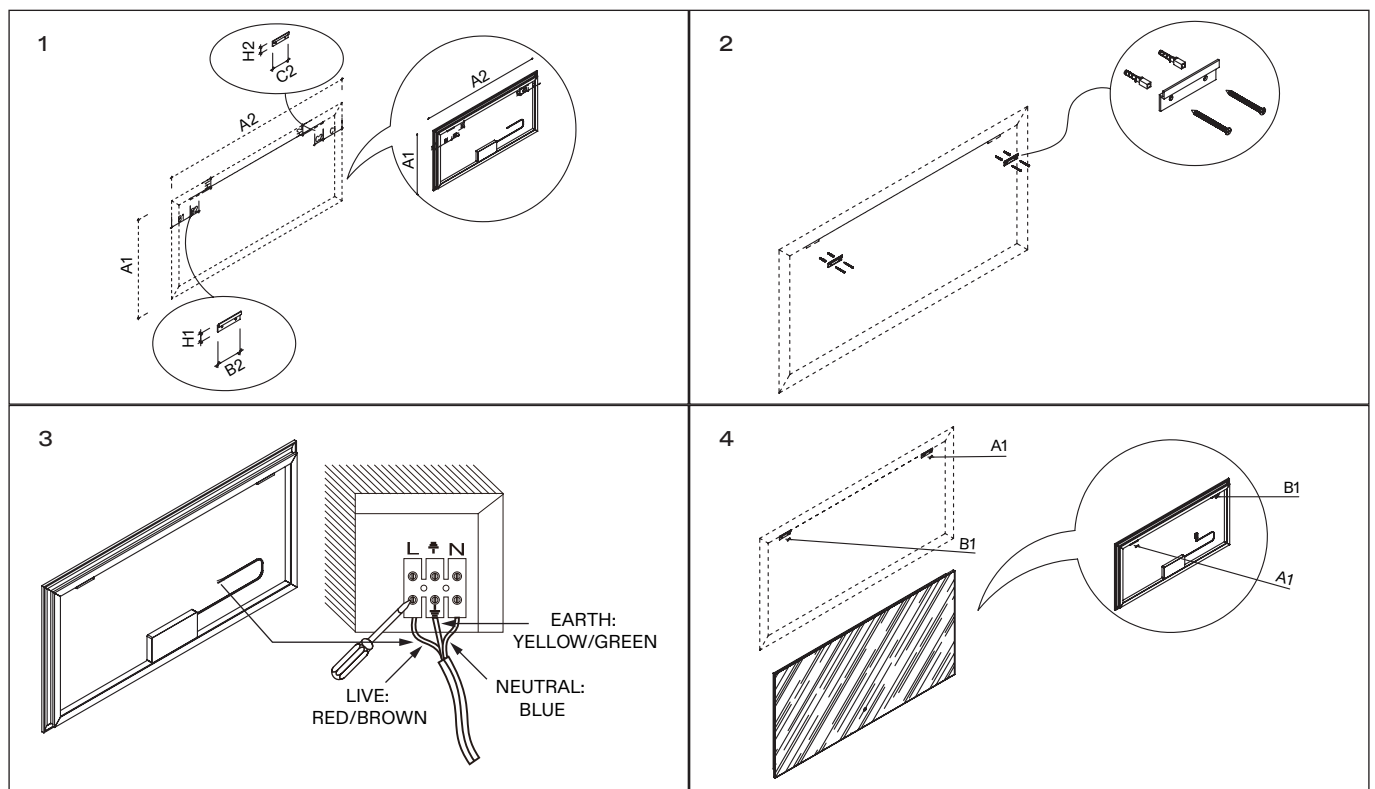
If you have any queries in relation to this product or guide, please contact our Customer Service team on 020 3370 4057.

RECTANGULAR LED MIRROR

PRODUCT KIT

- A LED Mirror
- B Wall Brackets (x2)
- C Wall Plugs (x4)
- D Screws (x4)

- 1 Measure the distance between the two fixings located on the back of the mirror, then use the measurement to mark the position of the wall brackets onto the wall. Next, hold the wall brackets in position against the wall, and mark the positions for the screw holes.
- 2 Use an electric drill to prepare the required holes, gently tap the provided wall plugs into the holes, then screw the brackets to the wall. Please note the direction of the wall brackets, as shown in figure 2.
- 3 Pull down the electrical switch and connect the incoming wires as shown in figure 3.
- 4 Carefully hang the mirror onto the wall brackets to complete the installation.

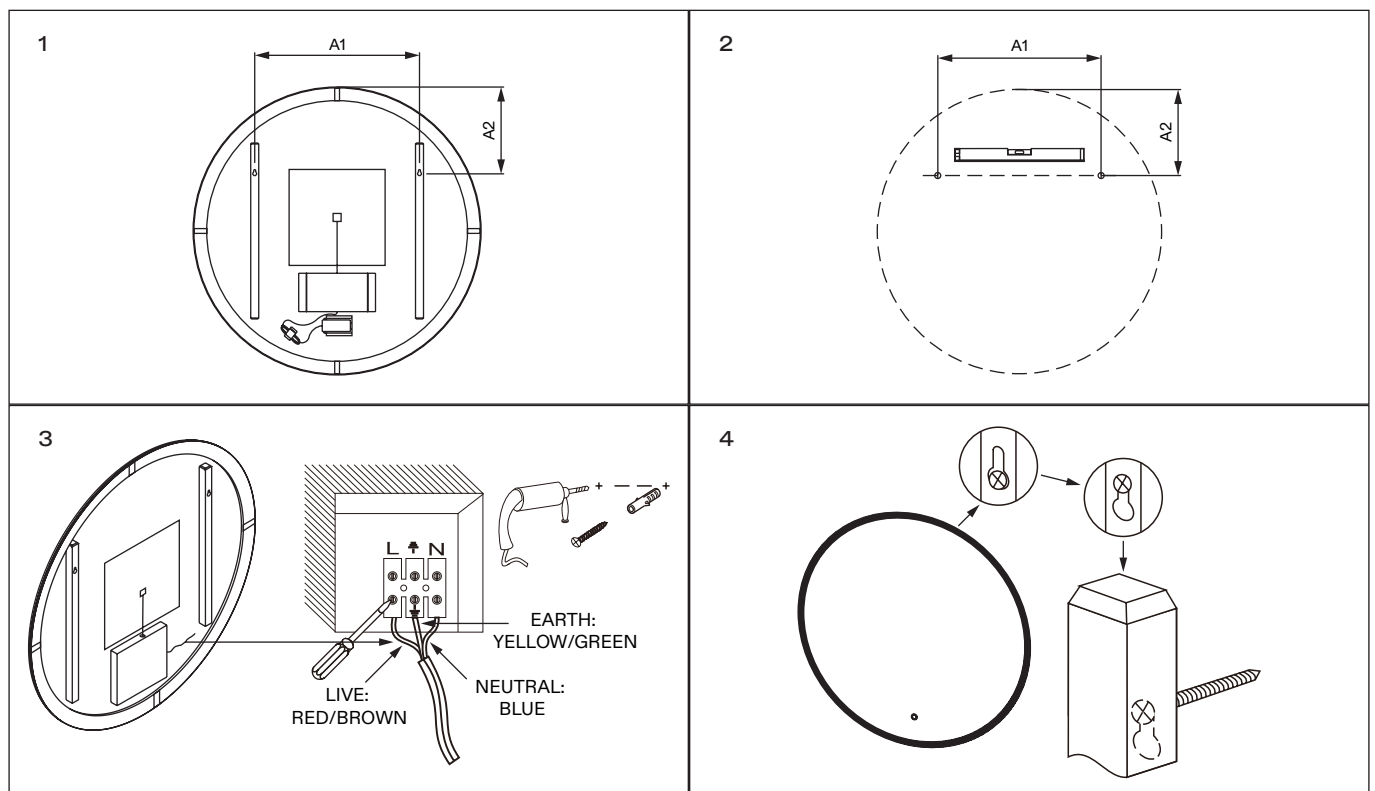


CIRCULAR LED MIRROR

PRODUCT KIT

- A** LED Mirror
- B** Wall Plugs (x2)
- C** Screws (x2)

- 1** Measure the A1, A2 and height distances as shown in figure 1.
- 2** Use the measurements to mark out the positioning of the mirror fixings onto the wall.
- 3** Use an electric drill to prepare the required holes, gently tap the provided wall plugs into the holes, then affix the screws. Ensure that the screws are not flush to the wall, as some length is needed to hang the mirror. Next, pull down the electrical switch and connect the incoming wires as shown in figure 3.
- 4** Carefully align the holes on the back of the mirror frame with the screws on the wall, and hang the mirror onto the screws to complete the installation.

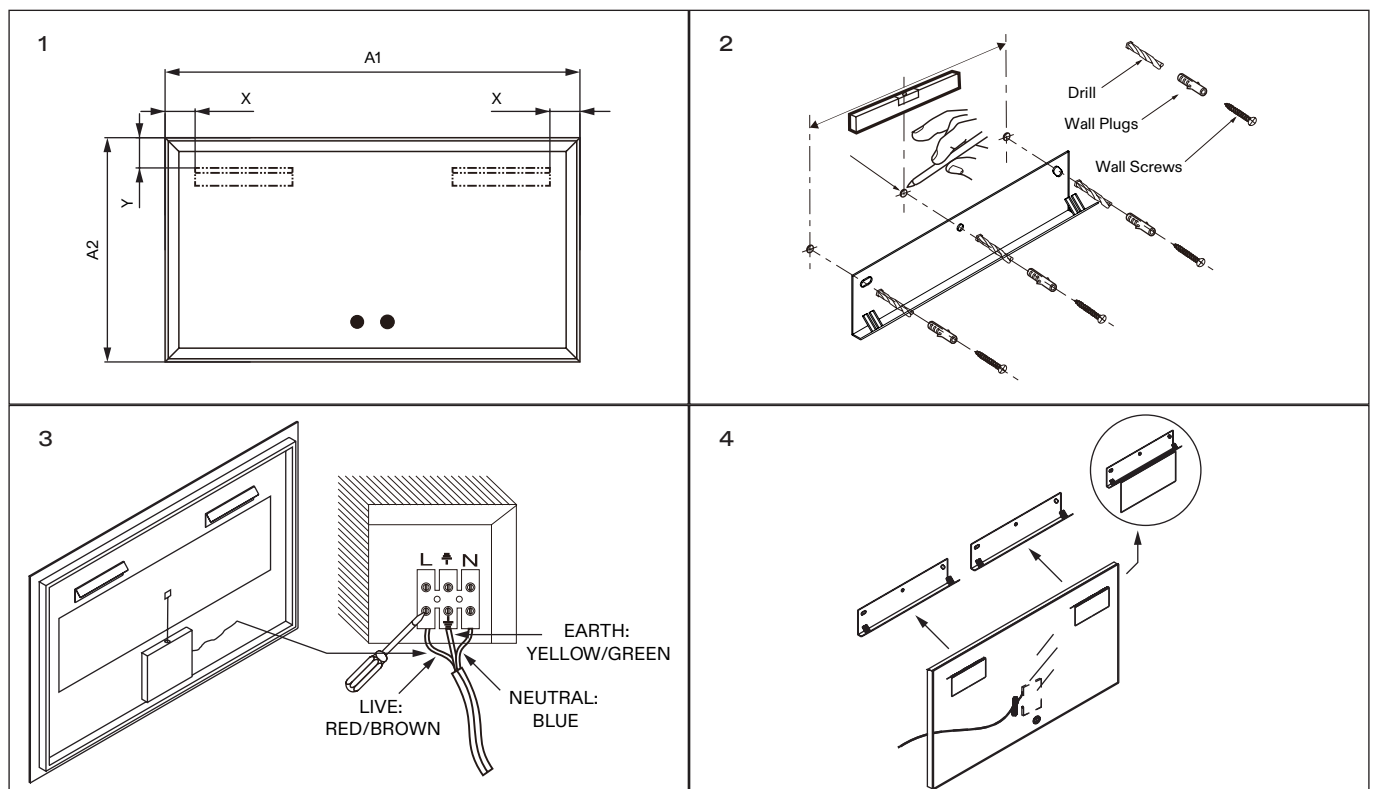


LARGE RECTANGULAR LED MIRROR

PRODUCT KIT

- A** LED Mirror
- B** Wall Brackets (x2)
- C** Wall Plugs (x4)
- D** Screws (x4)

- 1** Measure the A1, A2, X, and Y distances as shown in figure 1.
- 2** Use the measurements to mark the position of the wall brackets onto the wall, then hold the wall brackets in position against the wall and mark the positions for the screw holes. Next, create the holes with an electric drill, gently tap the provided wall plugs into the holes, then screw the wall brackets into place.
- 3** Pull down the electrical switch and connect the incoming wires as shown in figure 3.
- 4** Carefully align the hanging sections on the back of the mirror with the installed wall brackets, and hang the mirror onto the brackets to complete the installation.



CARE INSTRUCTIONS

To clean and maintain the flawless finish of this product, please follow the below instructions. Improper maintenance will void your product guarantee.

✓ Clean the mirror using a glass cleaner and soft cloth.

✗ Do not use acidic or alkaline cleansers.

✗ Do not use abrasive cleansers or cloths.

Go to Lusso.com to activate your guarantee.

LUSO

Customer Care: 020 3370 4057

International: +44 20 3370 4057