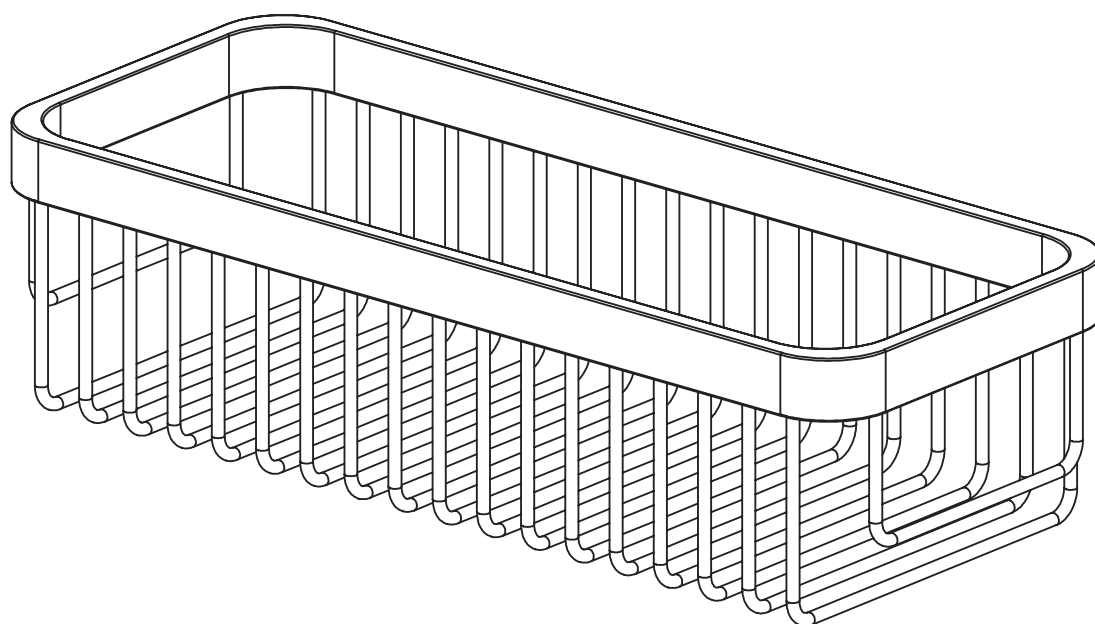
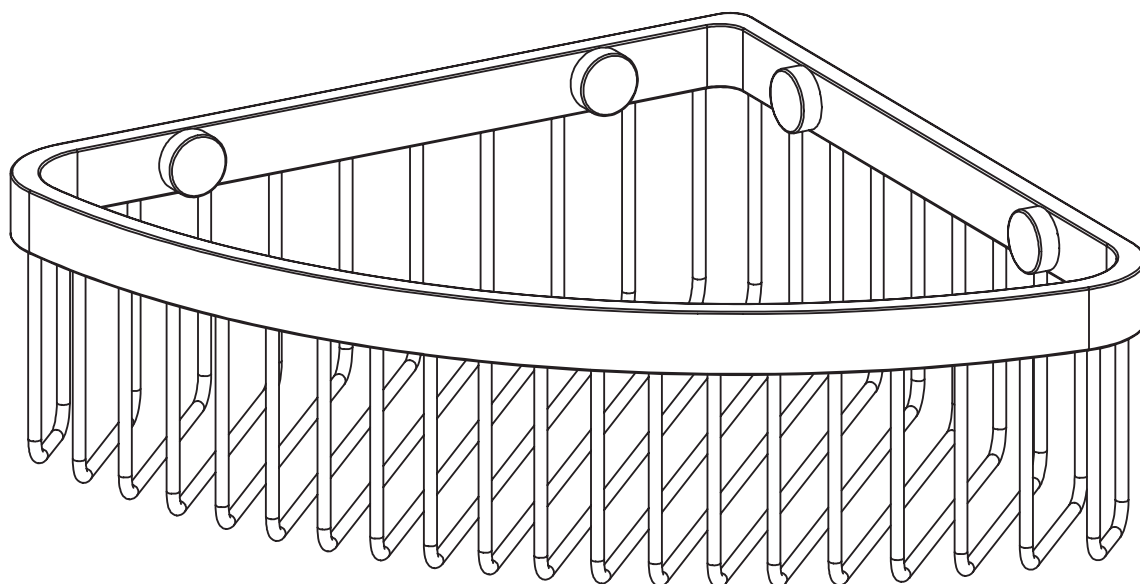


# LUXE

M73 / M78

## SHOWER STORAGE BASKET



### EN INSTALLATION AND CARE GUIDE

Please retain for future reference

# LUSO



# INTRODUCTION

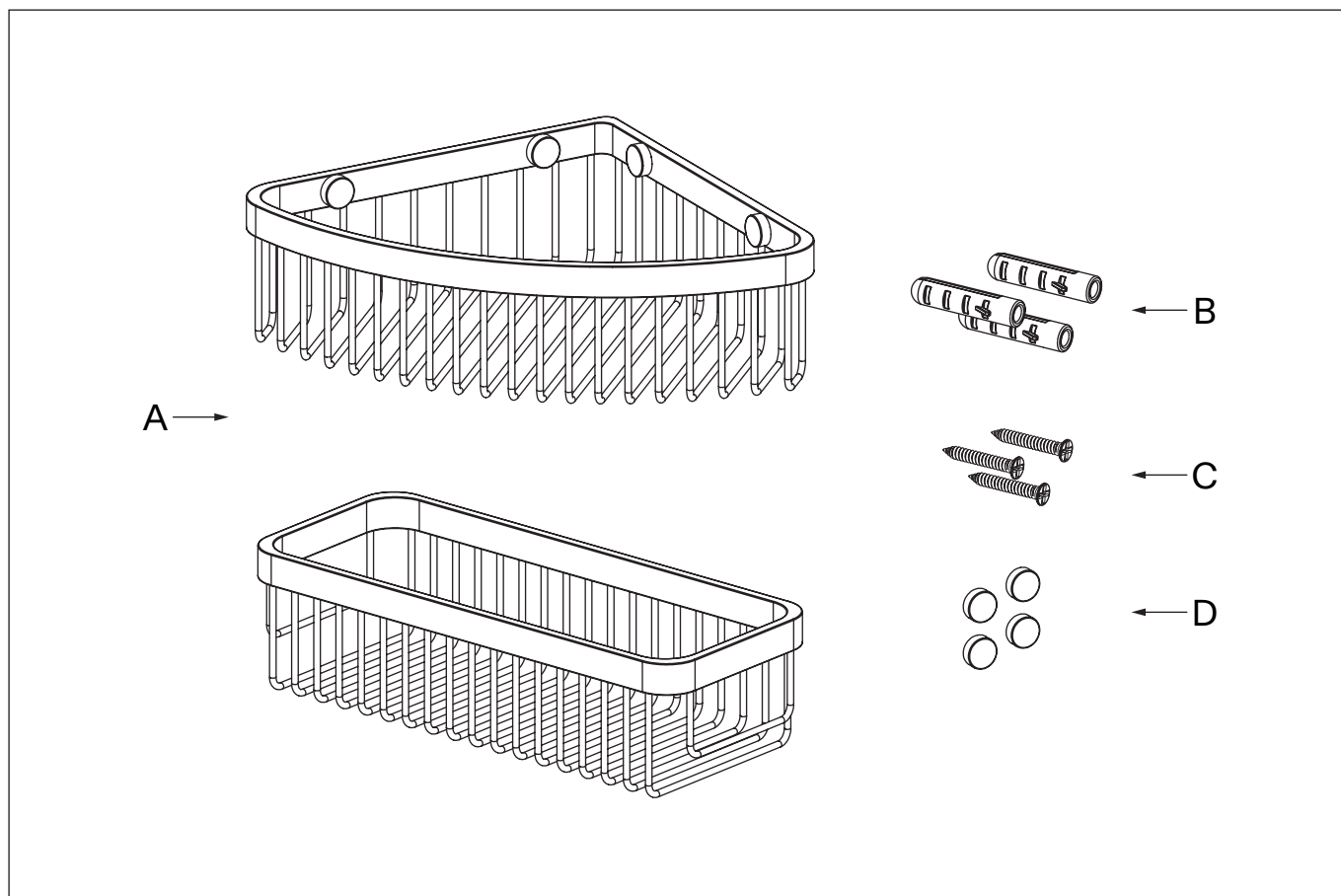
Thank you for purchasing this Luxe Shower Storage Basket.

Please read this guide carefully before installing, using and cleaning this product, and retain it for future reference.

If you have any queries in relation to this product or guide, please contact our Customer Service team on 020 3370 4057.

## PRODUCT KIT

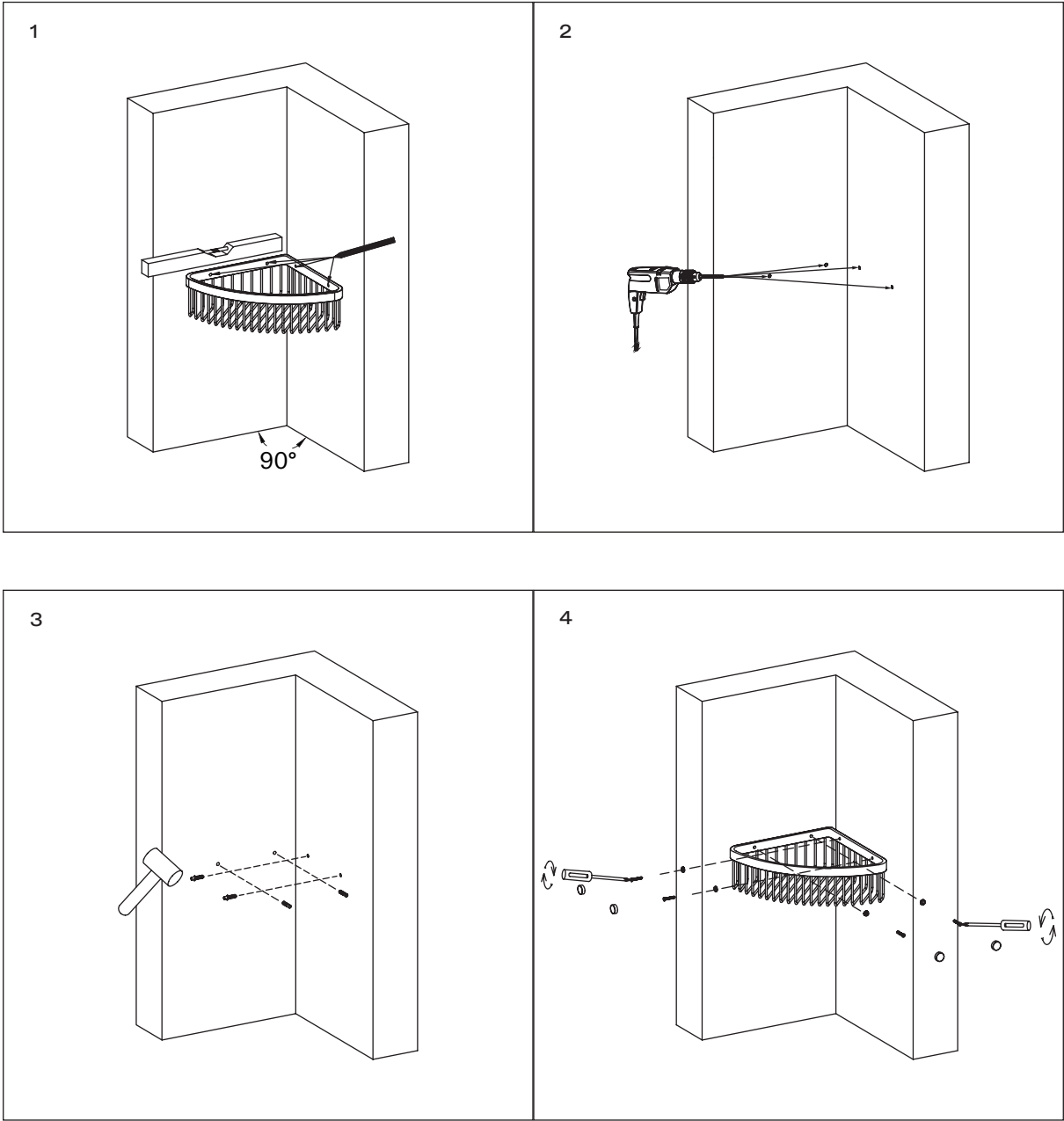
- A** Shower Storage Basket
- B** Wall Plugs
- C** Screws
- D** Decorative Caps



# INSTALLATION STEPS

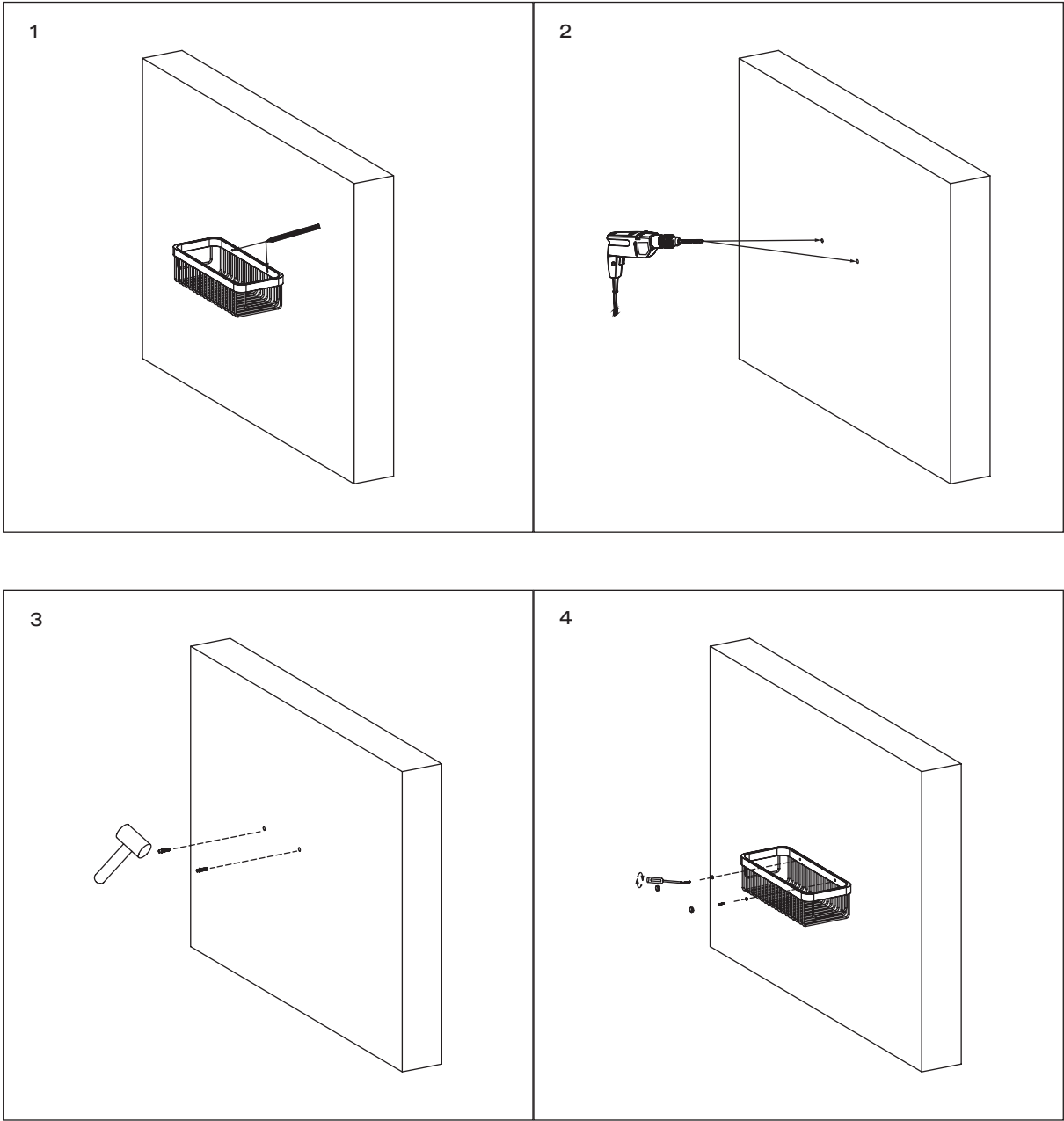
- 1** Hold the storage basket against the installation wall - using a spirit level to ensure it's properly aligned - and mark the position of the required drill holes.
- 2** Put the basket to one side, and use an electric drill with a 6mm drill bit to create the required holes.
- 3** Gently tap the wall plugs into the holes until they're level with the wall.
- 4** Hold the storage basket against the wall, use the provided screws to fix it into place, then cover the exposed screw heads with the decorative caps.

# CORNER SHOWER BASKET



CONTINUED OVERLEAF

# LARGE SHOWER BASKET



# CARE INSTRUCTIONS

To clean and maintain the flawless finish of this product, please follow the below instructions. Improper maintenance will void your product guarantee.

✓ Clean regularly with water and a mild detergent.

✓ Dry with a soft cloth.

✗ Do not use acidic cleansers.

✗ Do not use abrasive cleansers or cloths.

Go to [Lusso.com](https://Lusso.com) to activate your guarantee.

# LUSO

Customer Care: 020 3370 4057

International: +44 20 3370 4057