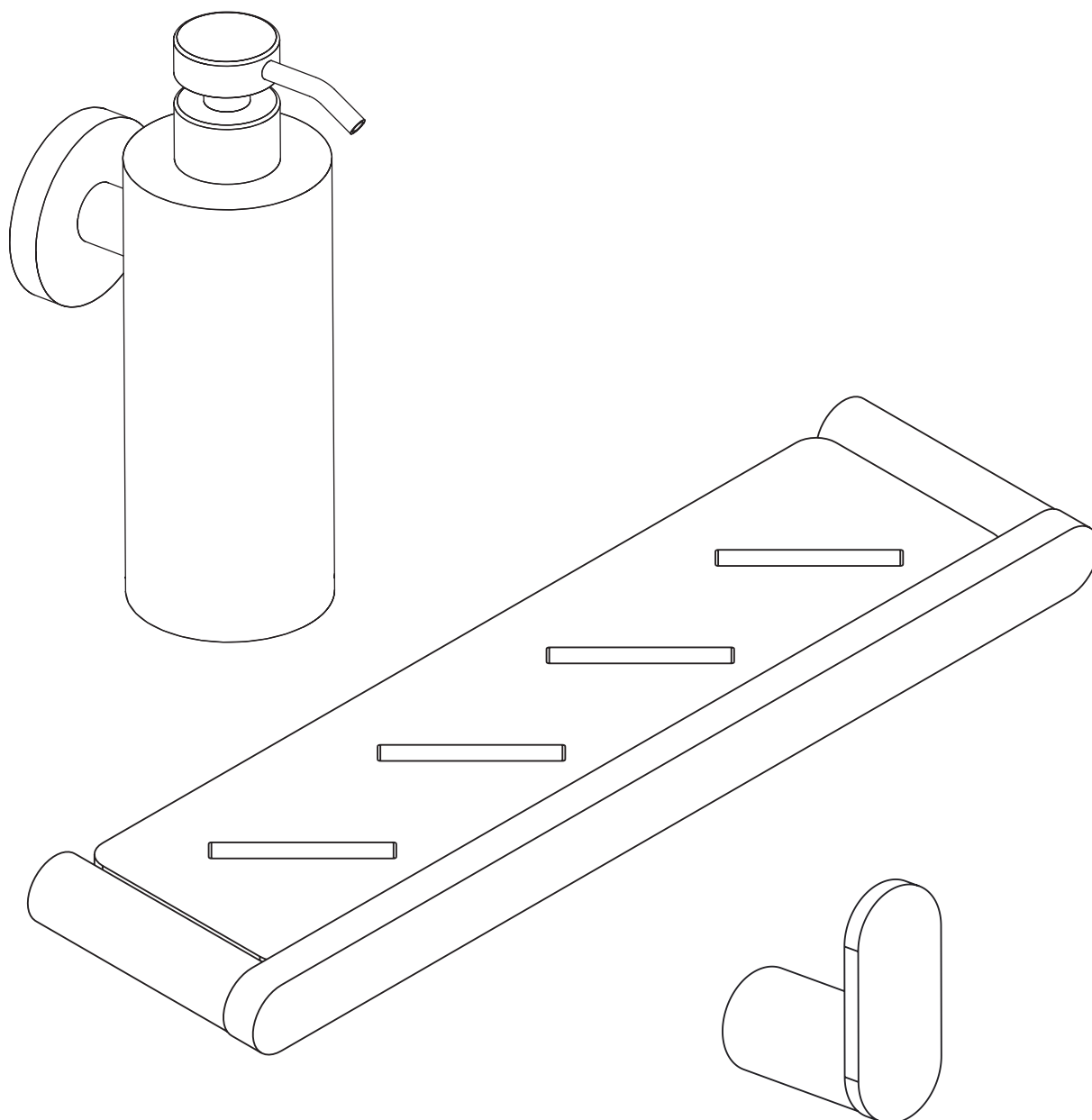


LUXE

BATHROOM ACCESSORIES



EN
INSTALLATION
AND CARE GUIDE

Please retain for future reference

LUSO

INTRODUCTION

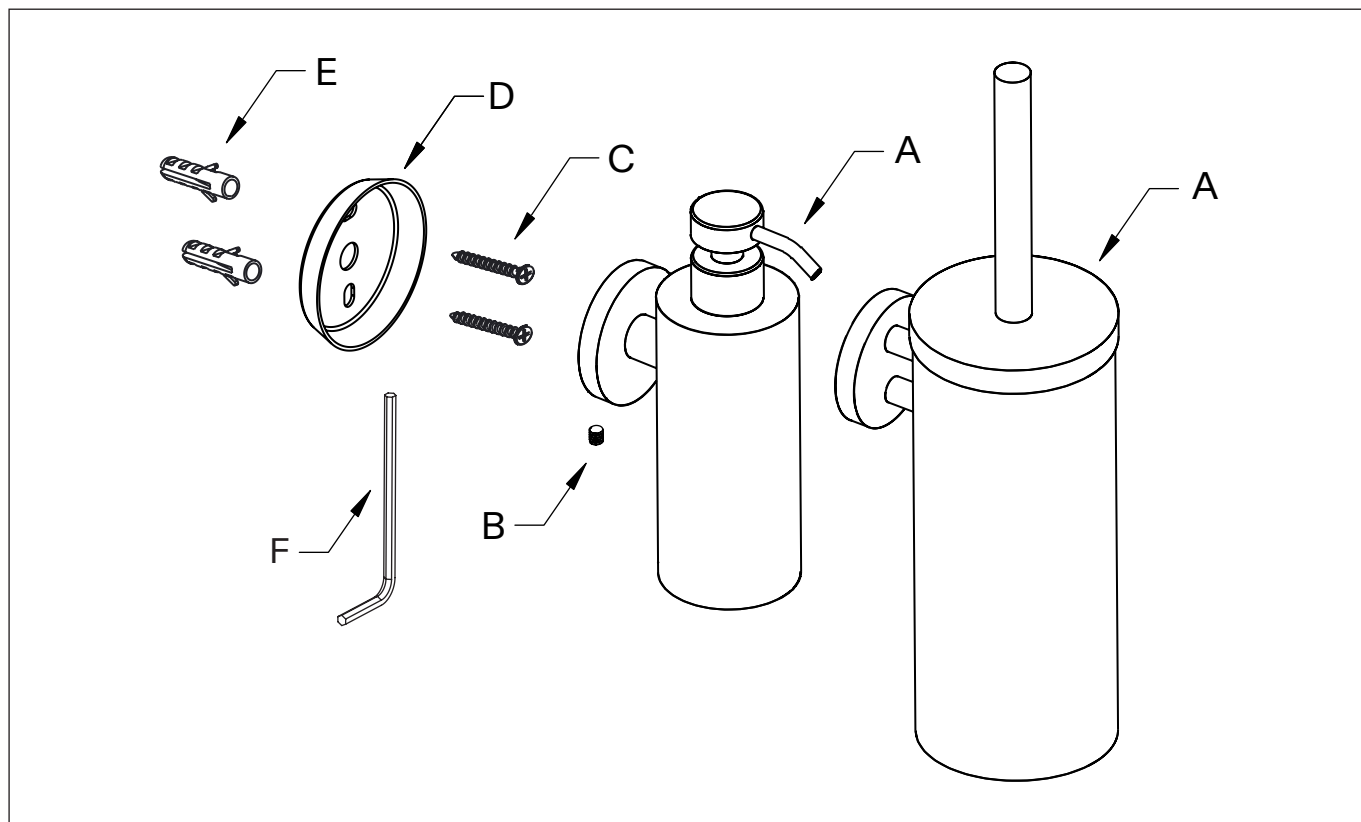
Thank you for purchasing from the Luxe Bathroom Accessories Collection.

Please read this guide carefully before installing, using and cleaning this product, and retain it for future reference. You must also ensure that you fully test the product before installing it as Lusso will not be held responsible for any costs involved in the removal of the accessory if you find there is a fault.

If you have any queries in relation to this product or guide, please contact our Customer Service team on 020 3370 4057.

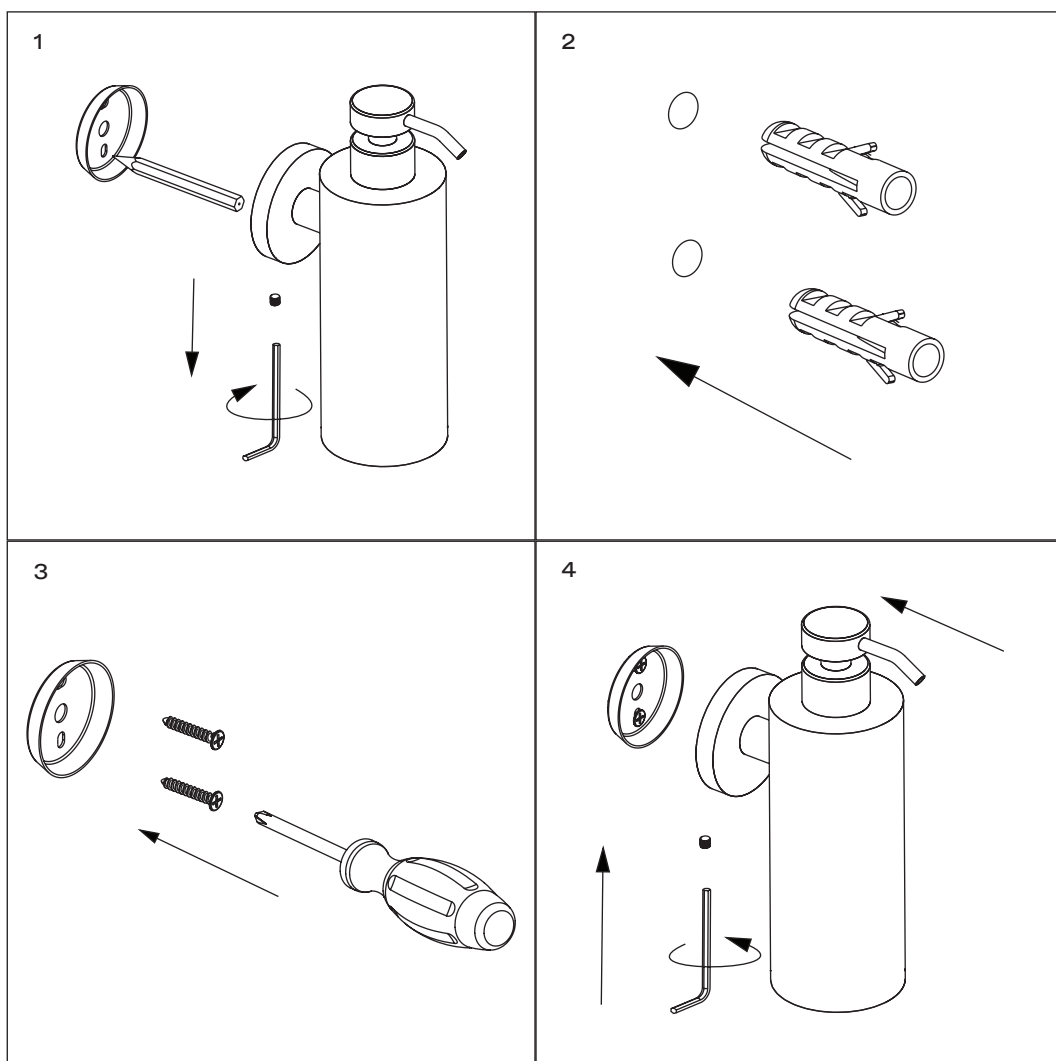
PRODUCT KIT

- A** Accessory
- B** Grub Screw
- C** Screws (x2)
- D** Mounting Plate
- E** Wall Plugs (x2)
- F** Allen Key



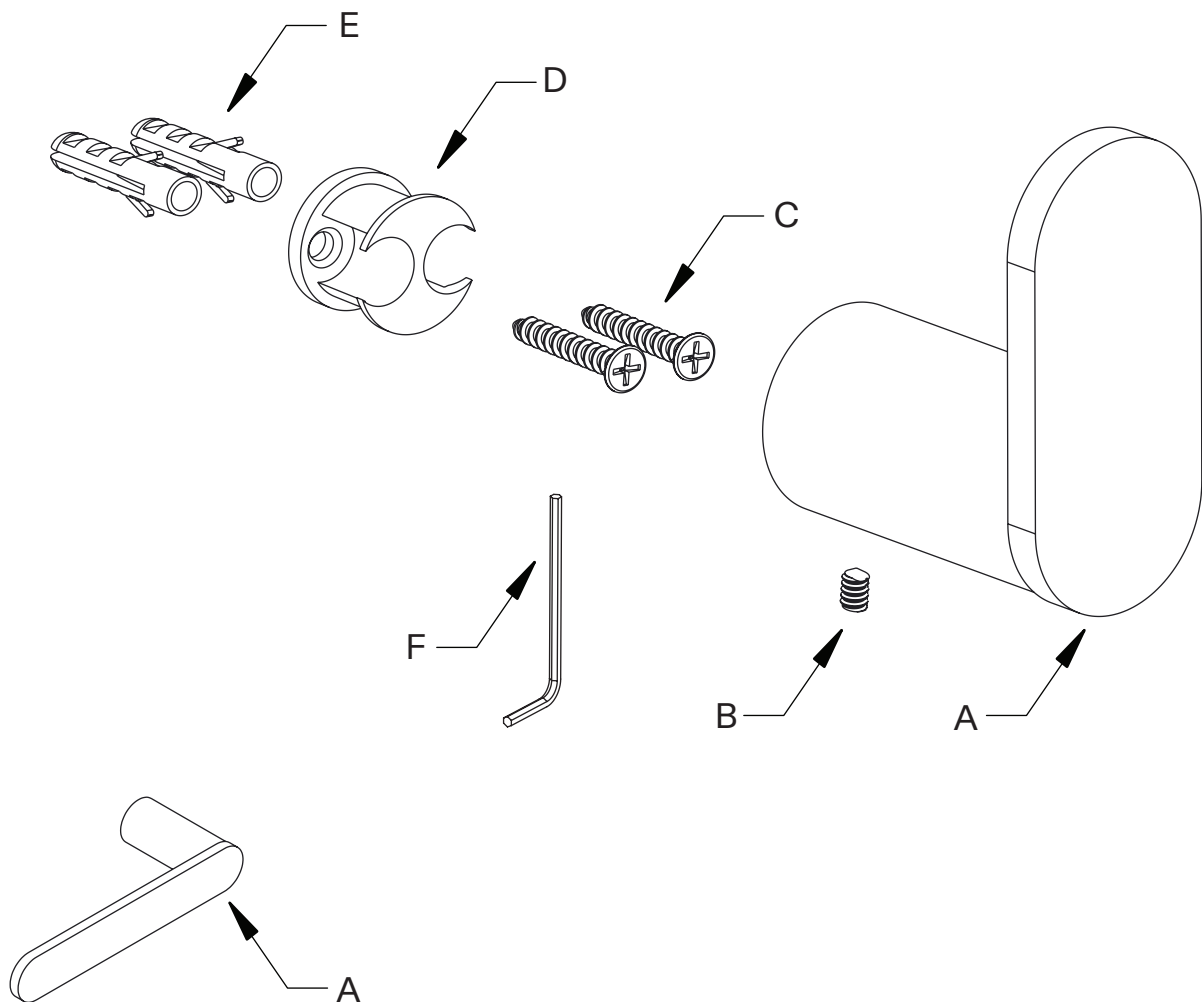
INSTALLATION STEPS

- 1** Remove the fixing plate from the accessory by loosening the grub screw. Next, hold the plate against the installation wall, use a pencil to mark the position of the mounting holes - ensuring they are vertically aligned - then put the plate to one side and create the holes with an electric drill. The hole size may depend on the wall type, however 6mm holes are recommended to accommodate the provided wall plugs.
- 2** Insert the wall plugs into the prepared holes, ensuring that they're flush with the wall surface.
- 3** Align the fixing plate with the holes, and secure into place with the provided screws.
- 4** Gently push the accessory onto the plate and check that it's level, loosening the screws and adjusting the mounting plate position if necessary. Finally, tighten the grub screw with the provided allen key.



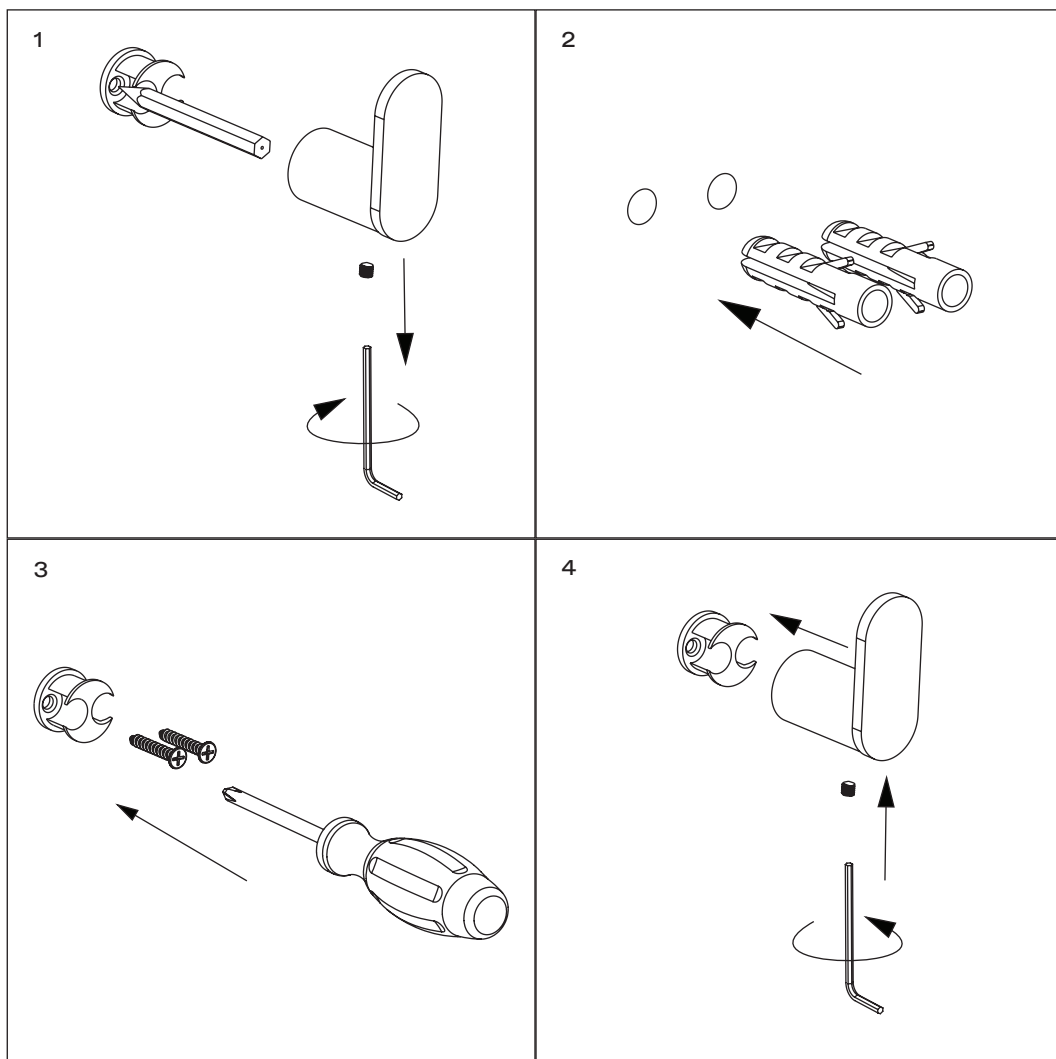
PRODUCT KIT

- A Accessory
- B Grub Screw
- C Screws (x2)
- D Fixing Piece
- E Wall Plugs (x2)
- F Allen Key



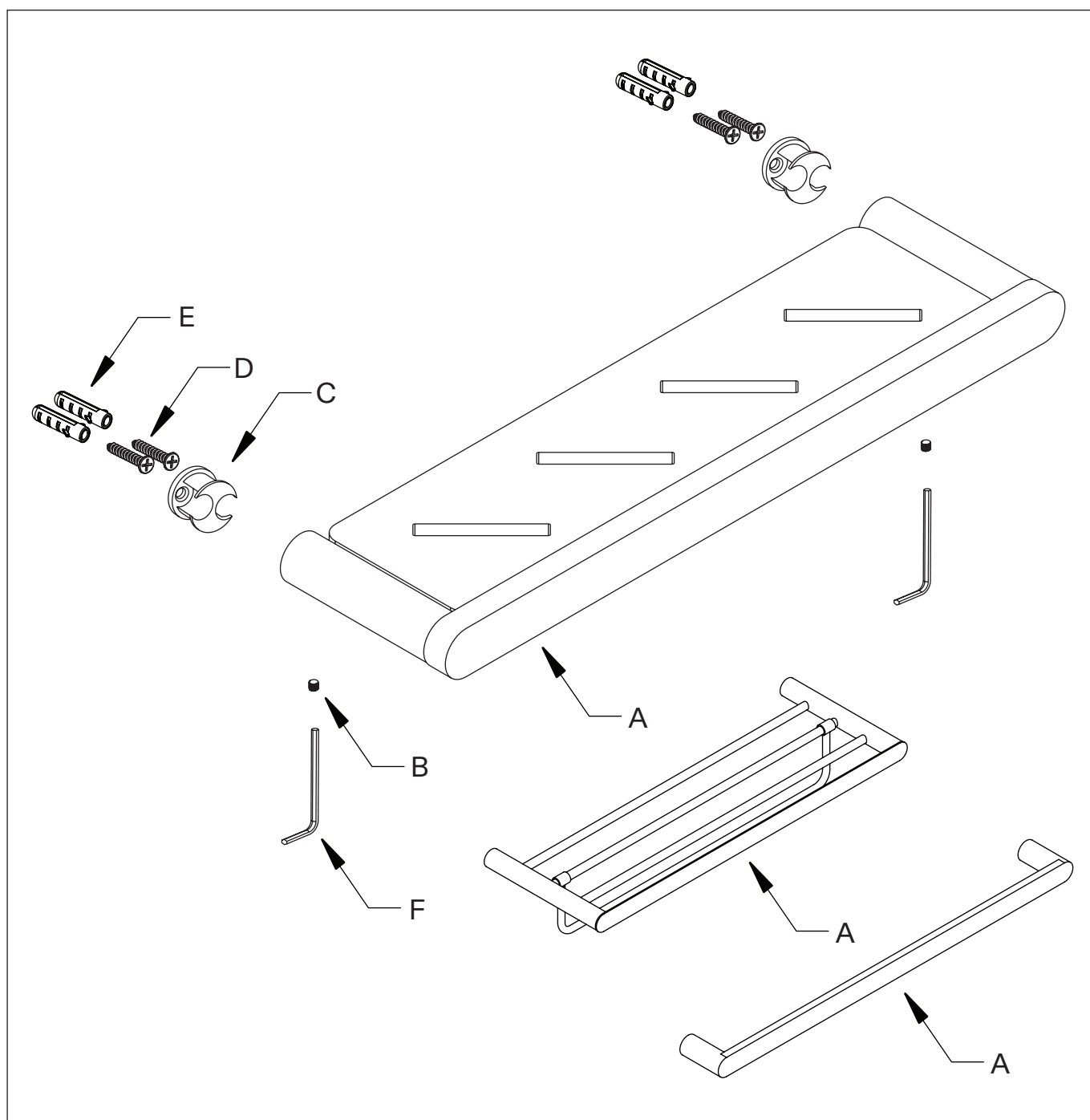
INSTALLATION STEPS

- 1 Remove the fixing plate from the accessory by loosening the grub screw. Next, hold the plate against the installation wall, use a pencil to mark the position of the mounting holes - ensuring they are vertically aligned - then put the plate to one side and create the holes with an electric drill. The hole size may depend on the wall type, however 6mm holes are recommended to accommodate the provided wall plugs.
- 2 Insert the wall plugs into the prepared holes, ensuring that they're flush with the wall surface.
- 3 Align the fixing plate with the holes, and secure into place with the provided screws.
- 4 Gently push the accessory onto the plate and check that it's level, loosening the screws and adjusting the mounting plate position if necessary. Finally, tighten the grub screw with the provided allen key.



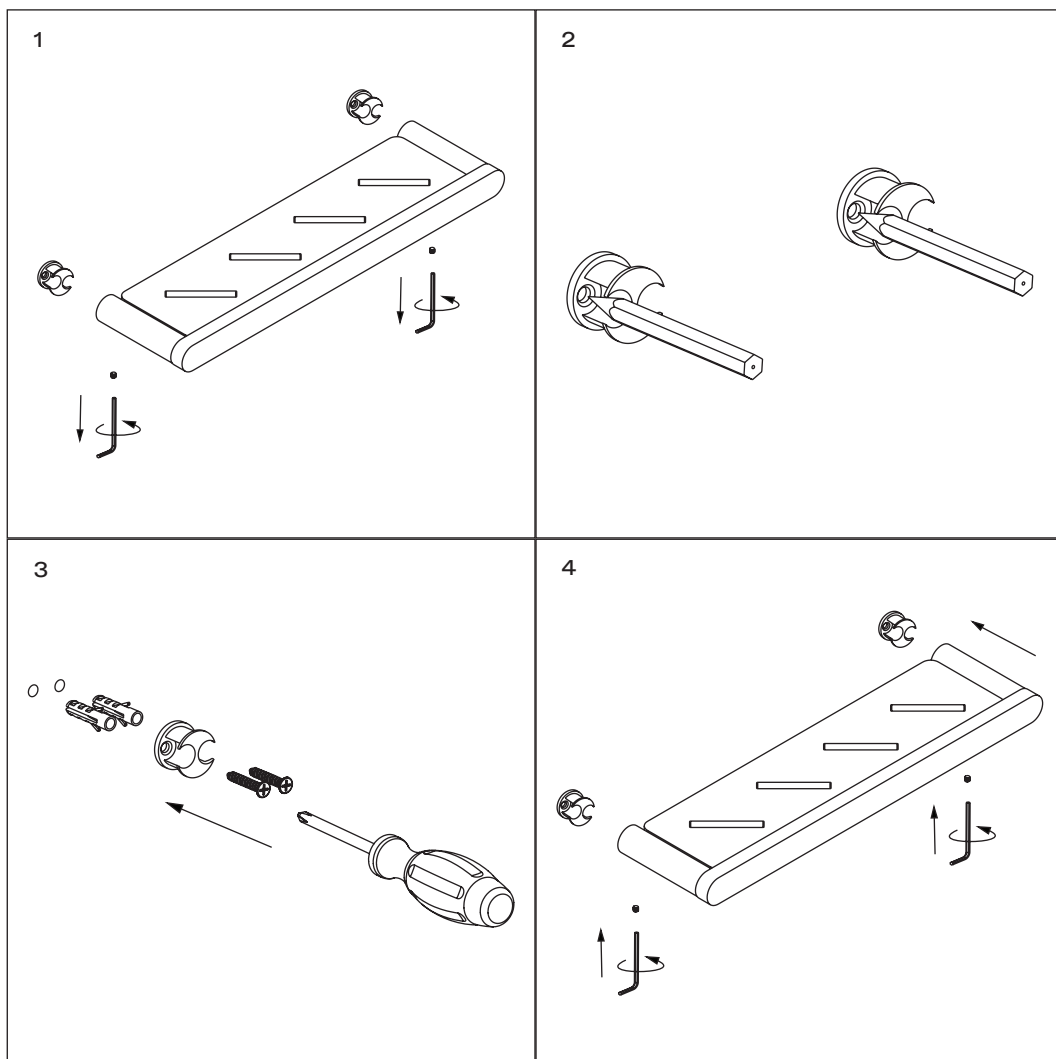
PRODUCT KIT

- A Accessory
- B Grub Screws (x2)
- C Fixing Pieces (x2)
- D Screws (x4)
- E Wall Plugs (x4)
- F Allen Key



INSTALLATION STEPS

- 1 Measure the distance between the plates on the base of the accessory, then use the measurement to mark the position of the fixing plates onto the installation wall, ensuring that the markings are level. Next, remove the fixing plates from the accessory by loosening the grub screws with the provided allen key.
- 2 Hold the plates in position against the installation wall, and use a pencil to mark the position of the mounting holes - ensuring they are vertically aligned - then put the plates to one side and create 6mm holes with an electric drill. Insert the wall plugs into the prepared holes, ensuring that they're flush with the wall surface.
- 3 Align the fixing plates with the prepared holes, and secure into place with the provided screws.
- 4 Gently push the accessory onto the plates and check that it's level, loosening the screws and adjusting the mounting plate position if necessary. Finally, tighten the grub screws with the provided allen key.



CARE INSTRUCTIONS

To clean and maintain the flawless finish of this product, please follow the below instructions. Improper maintenance will void your product guarantee.

- ✓ Rinse the surface with clean water.
- ✓ Dry with a soft cloth.
- ✓ Remove surface marks with a neutral cleanser.

- ✗ Do not use acidic cleansers.
- ✗ Do not use abrasive cleansers or cloths.

Go to Lusso.com to activate your guarantee.

LUSO

Customer Care: 020 3370 4057

International: +44 20 3370 4057