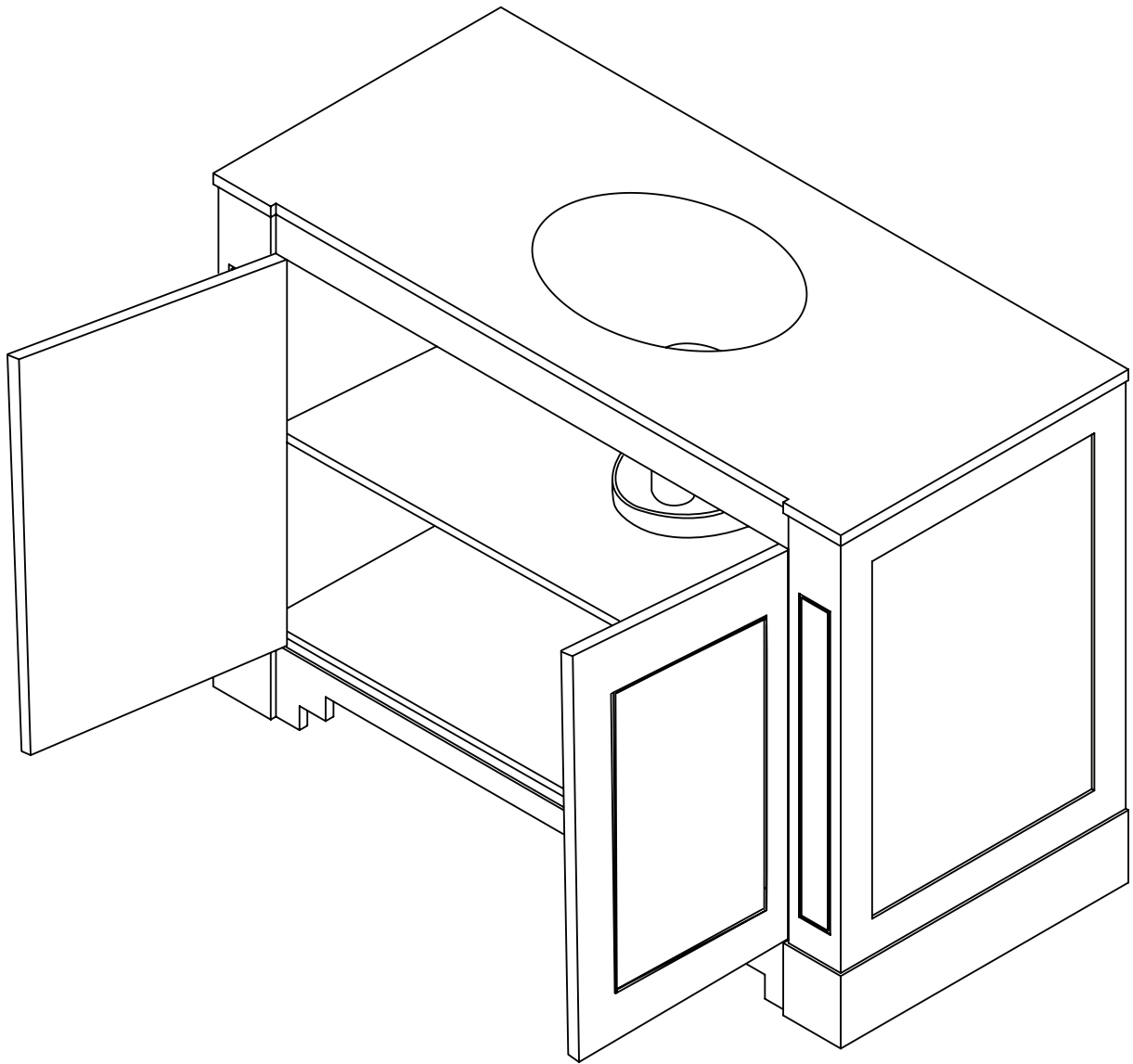


VANITY UNIT

FREESTANDING



EN
INSTALLATION
AND CARE GUIDE

Please retain for future reference

LUSO

INTRODUCTION

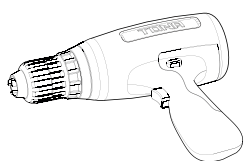
Thank you for purchasing a freestanding vanity unit from Lusso.

Please read this guide carefully before installing, using and cleaning your vanity unit, and retain it for future reference.

If you have any queries in relation to your purchased product or this guide, please contact our Customer Service team on 020 3370 4057.

REQUIRED INSTALLATION TOOLS

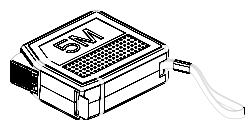
- A** Electric/Cordless Drill
- B** Drill Bit
- C** Tape Measure
- D** Spirit Level
- E** Kitchen & Bathroom Non-Acidic Silicone
- F** Pencil
- G** Screwdriver



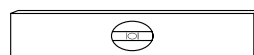
A



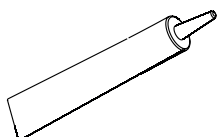
B



C



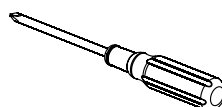
D



E



F



G

BEFORE INSTALLATION

We recommend that all vanity units are installed by a fully qualified plumber.

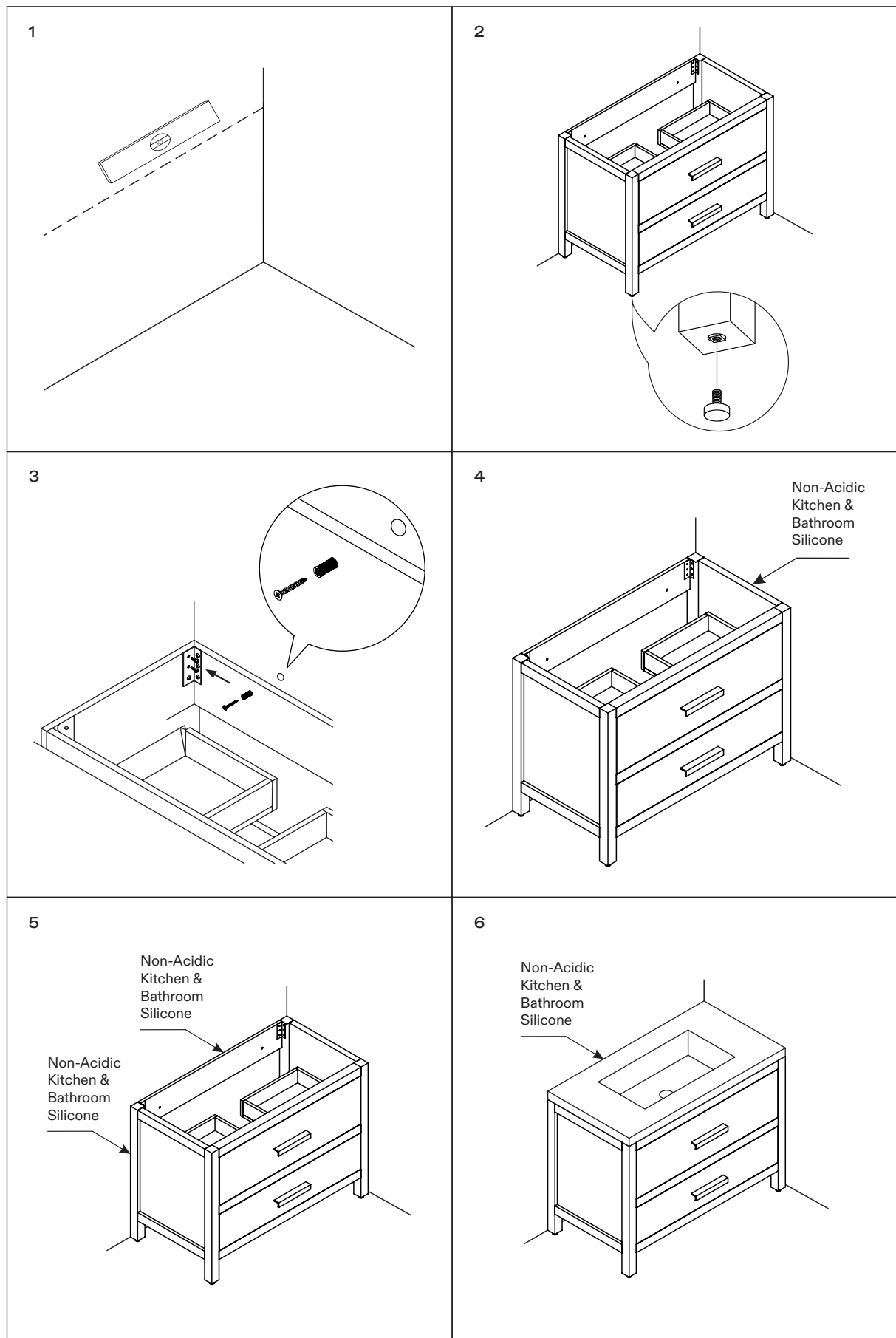
Prior to installation, please ensure that the installation area is suitably ventilated, and installation surfaces are prepared and completed in advance. Failure to do so will void your product warranty.

Please also unpack and check your vanity unit for any damage, defects or product errors before installation, and in the unlikely event that there are any issues, contact our Customer Service team.

INSTALLATION STEPS

Before installation, please note that freestanding vanity units must be affixed to a horizontal noggin in the wall.

- 1** Using a spirit level and pencil, mark the desired position of the wall brackets before drilling the required holes and securing the brackets into place using the provided fixings.
- 2** Carefully remove the vanity unit from its packaging - this may require two people - and install the leg screws while taking care not to damage the vanity unit surface. At this stage, don't over-tighten the screws as they may need to be adjusted later to ensure that the vanity unit is level.
- 3** Place the vanity unit into the desired position, and check that it's level before securing into place with the provided fixings. In some instances, packers may also be required to ensure the vanity unit remains level.
- 4** Before installing the top of the unit, apply non-acidic kitchen and bathroom silicone as shown in figure 4.
- 5** Next, using the same sealant, seal along the back edge of the top of the unit, and down the sides against the wall.
- 6** When installing a basin onto the unit, this must also be affixed with silicone. Once the silicone has fully dried, caulk around the basin and stone top to complete the installation.



DRAWER HINGE ADJUSTMENT AND REMOVAL

QUICK ASSEMBLY TROUBLESHOOTING

The drawer slides unsteadily - what should I do?

This is usually caused by debris in the mechanism. Carefully remove any debris, and ensure that the drawer runners are covered during assembly.

The drawers do not fully close - what is the issue?

To address this, you should correct the front and back assembly position of the drawer slides. You may also need to check that the drawer size is correct, and that the drawer has been properly adjusted to be level.

How can I remove the drawer?

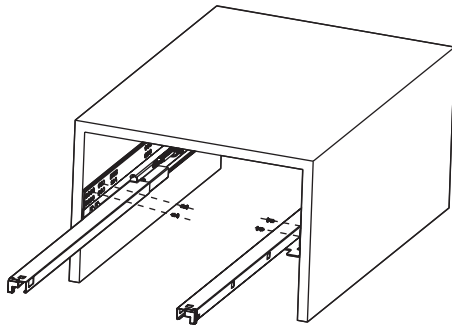
Turn the quick assembly fittings, and take out the lock pin.

How can I ensure that the drawers rebound?

If the distance of the rebound guide rail is less than 4mm, the fittings should be adjusted.

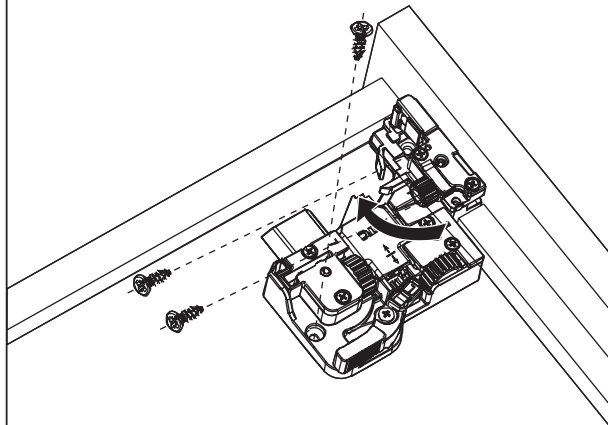
DTC DRAWER/HINGE INSTALLATION

1



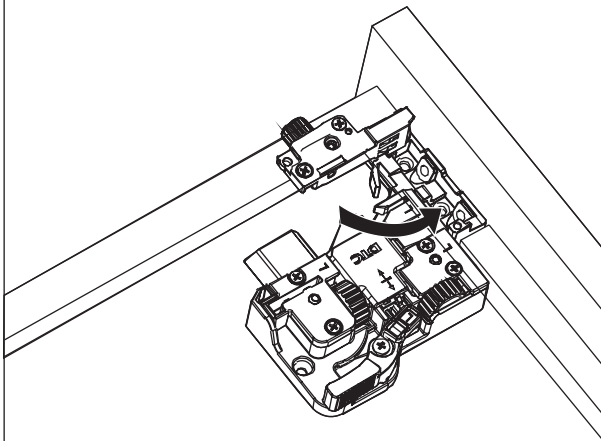
Fix the slide onto the cabinet.

2



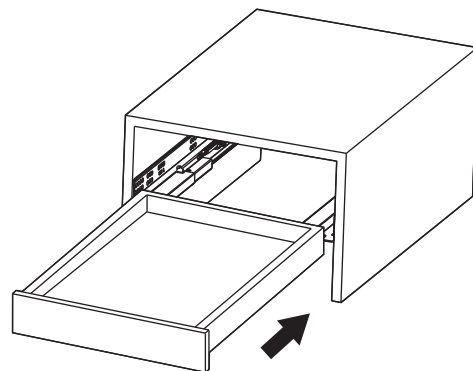
Move out the adjusting part and fix the locking device onto the drawer bottom.

3

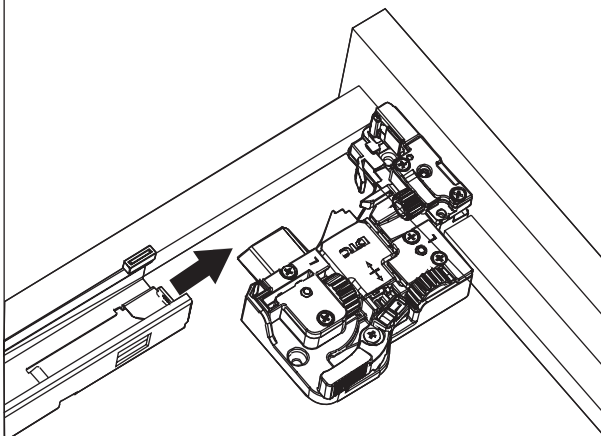


Put the adjusting part back and tighten the screws.

4

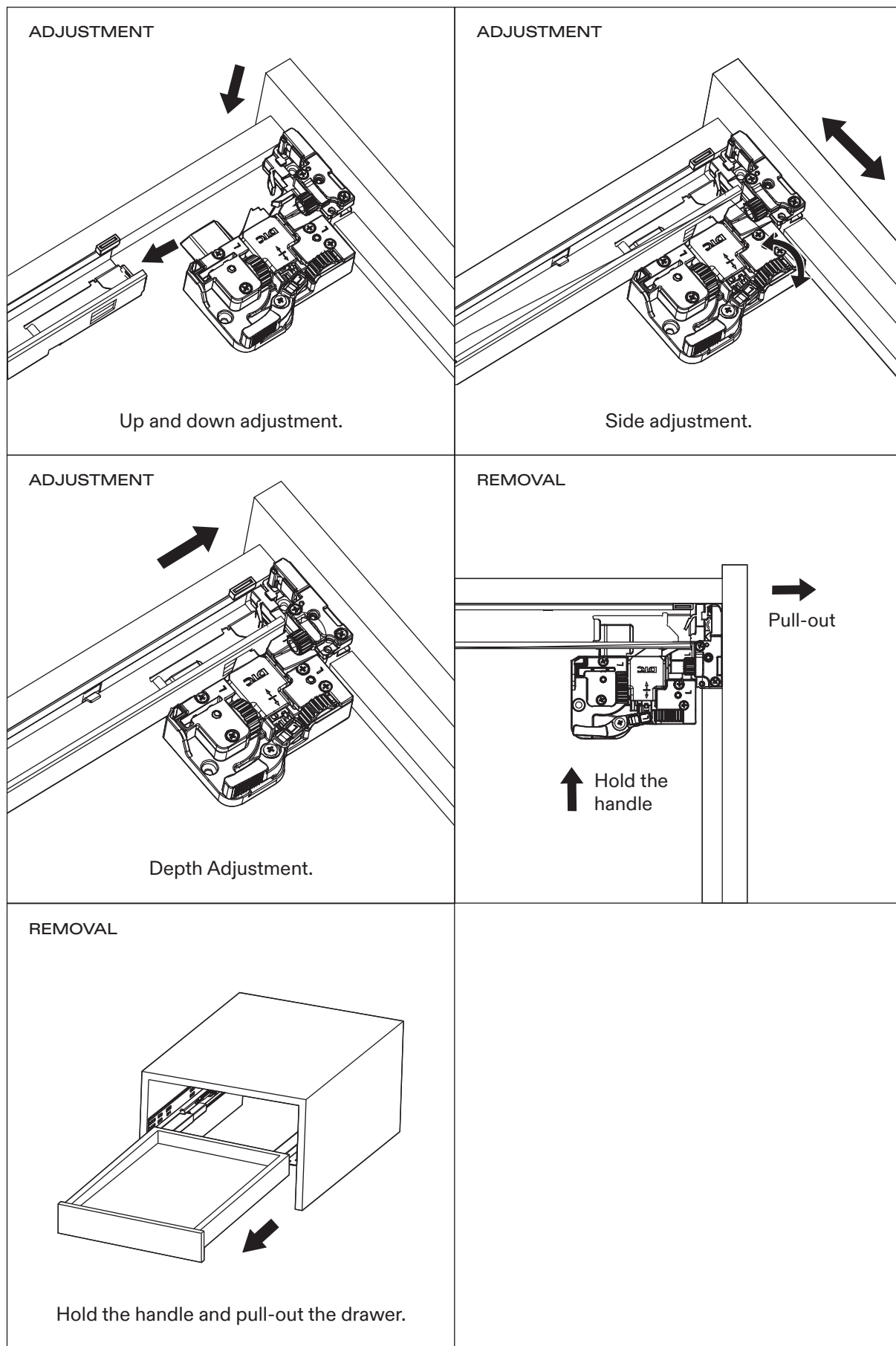


5

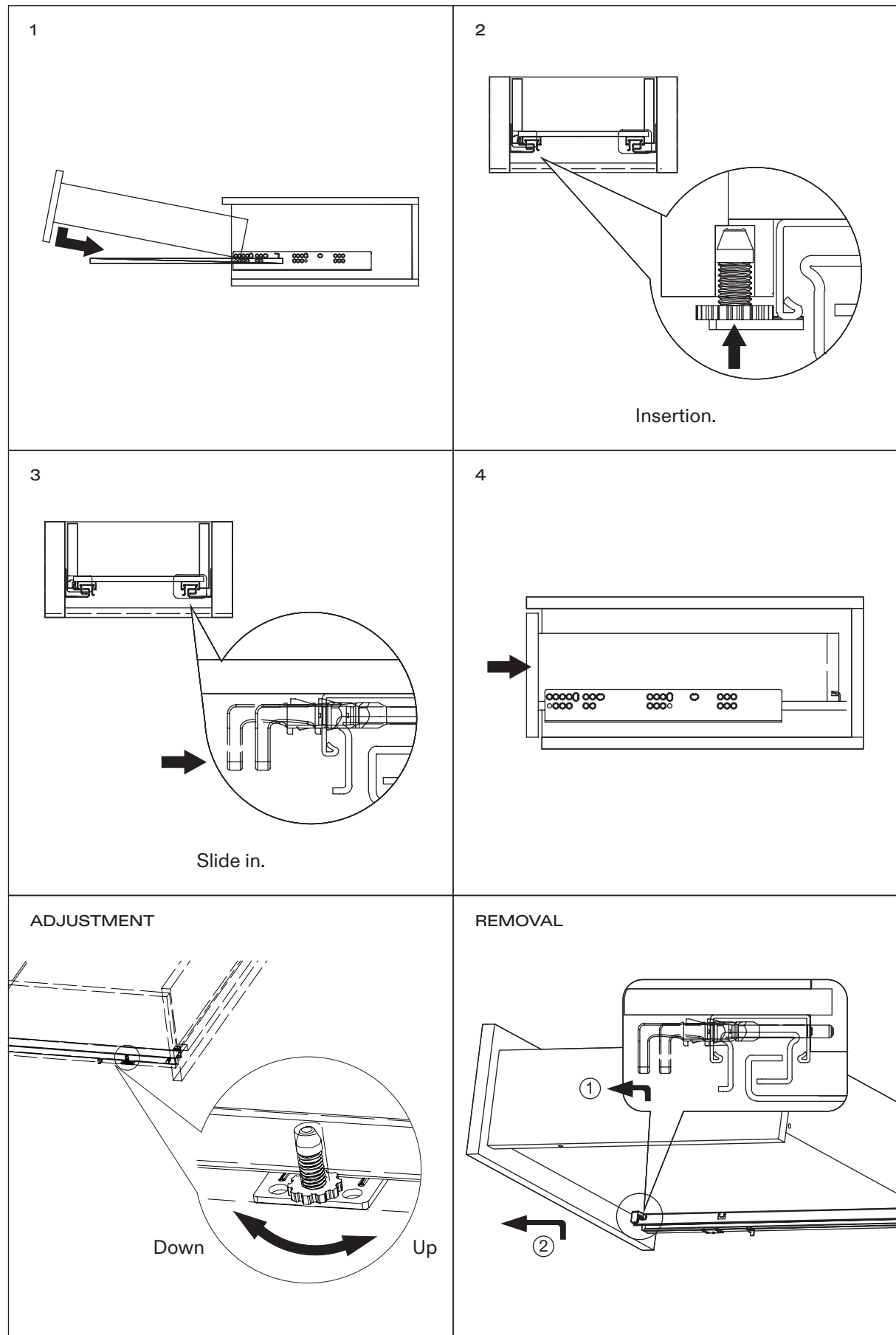


Lay the drawer bottom onto the slide then push the drawer into the cabinet.

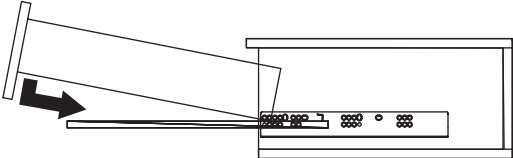
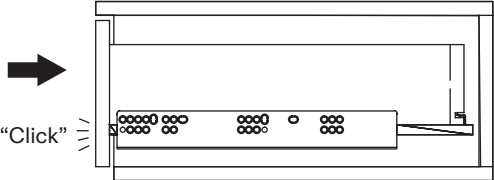
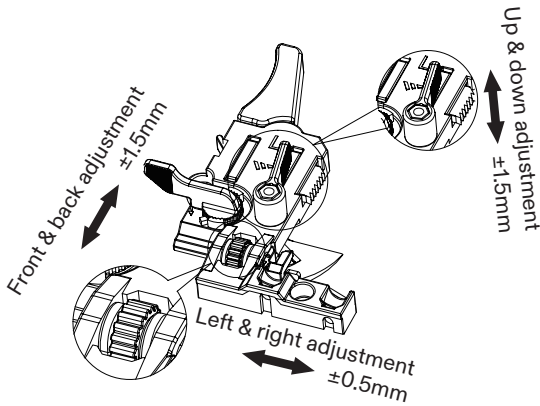
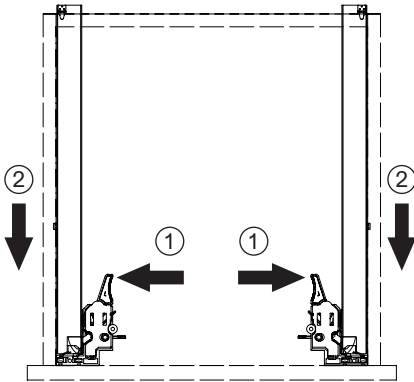
DTC DRAWER/HINGE ADJUSTMENT/REMOVAL



UNIHOPPER GENERAL DRAWER



UNIHOOPER QUICK ASSEMBLY DRAWER

<p>1</p> 	<p>2</p> 
<p>ADJUSTMENT</p> 	<p>REMOVAL</p> 

CARE INSTRUCTIONS

To clean and maintain the flawless finish of your vanity unit, please follow the below instructions. Improper maintenance will void your product guarantee.

- ✓ Regularly clean doors and cabinets with a damp cloth.
- ✓ Clean vanity unit basins using a damp sponge and warm soapy water.
- ✓ Clean glass panels and mirrored surfaces with a soft cloth and approved glass cleaner.
- ✗ Do not use abrasive cloths or cleansing products.
- ✗ Do not use strong detergents, ammonia-based products or bleaches.
- ✗ Avoid contact with prolonged condensation and heavy water spillages.

Go to Lusso.com to activate your guarantee.

LUSO

Customer Care: 020 3370 4057

International: +44 20 3370 4057