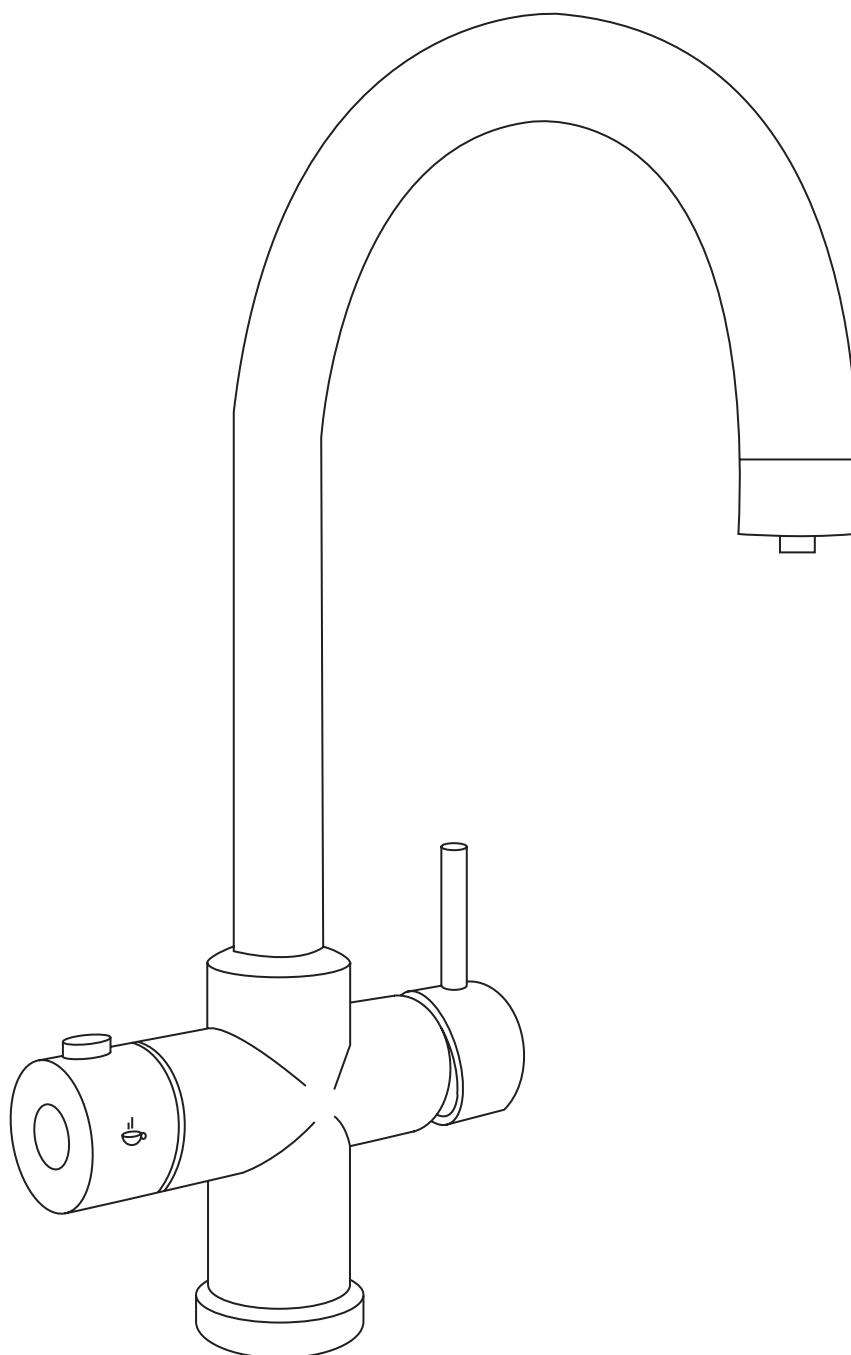


FILTRATA

FIL400 + FIL101

4-IN-1 BOILING WATER TAP



EN INSTALLATION AND CARE GUIDE

Please retain for future reference

LUSO

INTRODUCTION

Thank you for purchasing the Filtrata 4-in-1 Boiling Water Tap.

We're excited for you to save space, time and water with its optimal design, and enjoy the convenience of having hot, cold, filtered and boiling water available in an instant.

Please read this guide carefully before installing, using and cleaning your Filtrata, and retain it for future reference.



If you have any queries in relation to this product or guide, please contact our Customer Service team on 020 3370 4057.

SAFETY AS STANDARD

The Filtrata 4-in-1 is built with a fully insulated 360-degree spout and a childproof safety lever, which means it's always cool to the touch to provide extra safety for your living spaces.

As it produces boiling water in an instant, please take care when using the tap, and always provide user supervision for children and adults with care needs. To avoid burns or scalds, please also make sure that the tap isn't used to wash children or pets.

To avoid a build up of damp and condensation, you must also ensure that the tap boiler is installed in an area that has adequate ventilation, and that it's installed vertically with the inlet and outlet connections at the top of the boiler.

For your protection, please do not attempt to open or repair the boiling water tank as this will void your warranty, and never touch the boiler or plug with wet hands.

PRODUCT KIT

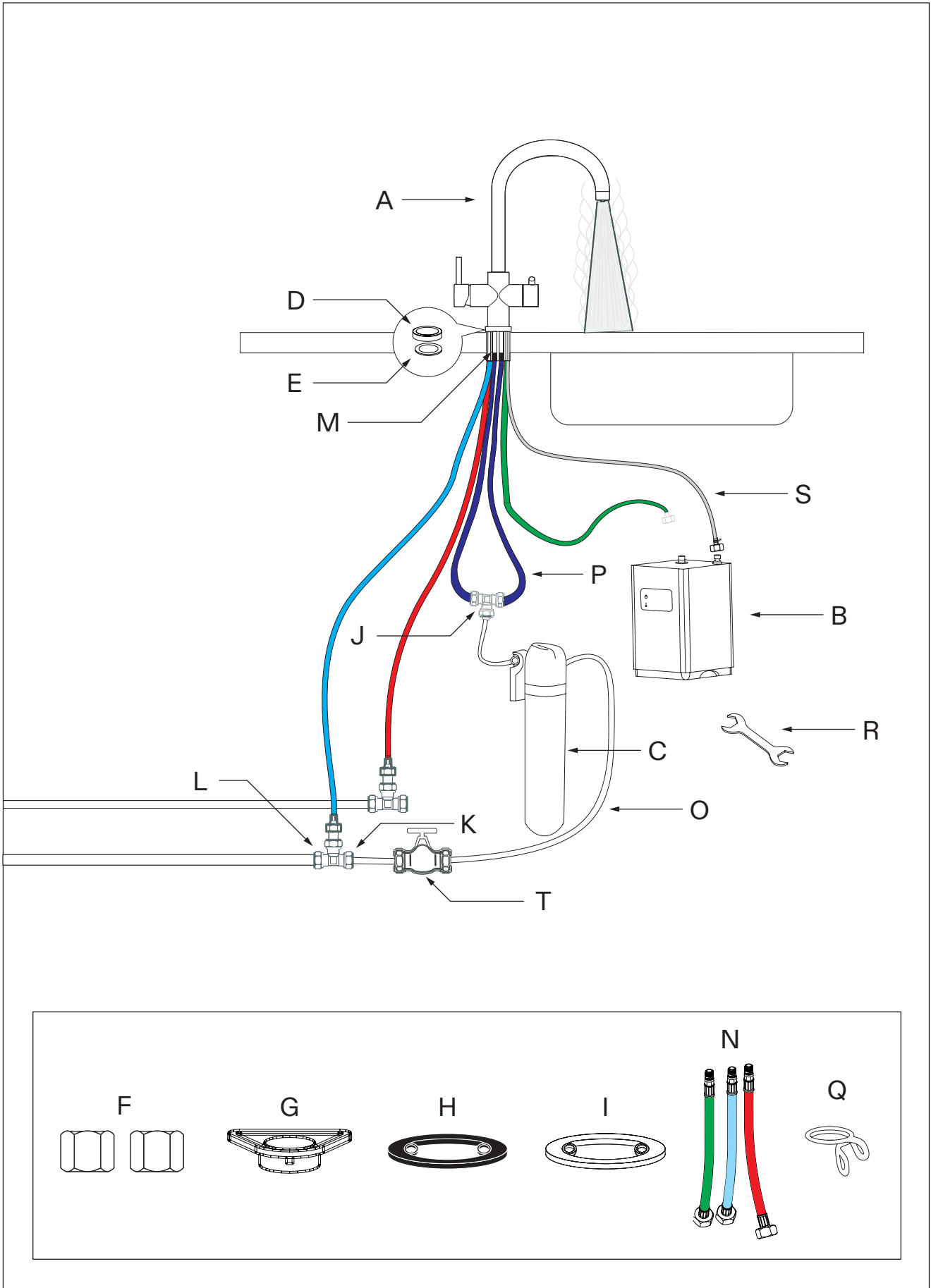
Your Filtrata 4-in-1 Boiling Water Tap conforms to CE regulations, and is provided in three boxes:

Lusso Filtrata 4 in 1 Tap (Code: FIL400/FIL101)

Lusso Filtrata Boiler (Code: FIL402-2.4L)

Lusso Filtrata Filter Kit (Code: FIL401-CAR)

- A** Lusso Filtrata Tap
- B** Lusso Filtrata Boiler
- C** Lusso Filtrata Filter
- D** Baseplate
- E** Base Seal
- F** Tap Locking Nut (x2)
- G** Tap Stabilising Ring
- H** Tap Locking Seal
- I** Tap Fixing Plate
- J** ¼ Inch T Quick Connector
- K** G ½ Inch (Female) & PE Tube Adapter
- L** G ½ Inch T-Piece
- M** ¼ Inch Quick Connector (x2)
- N** Flexible Hoses (x3)
- O** White PE Pipe
- P** Blue PE Pipes (x2)
- Q** Pipe Clip
- R** Nut Spanner
- S** Silicone Hose
- T** Isolation Valve



TECHNICAL SPECIFICATION

| | |
|---------------------------------------|---|
| Product Type | Kitchen Taps |
| Main Construction Material | Brass; ABS |
| Mount Type | Deck |
| Lever Type | 1 Hot and Cold and Filter Water Lever, 1 Boiled Water Lever. |
| Connection Inlet | G ½” BSP Flexi Tails |
| Number of Tap Holes | 1 |
| Tank Capacity | 2.4 Litres |
| Temperature Settings | 6 Setting; 75°C, 85°C, 95°C, 96°C, 97°C, 98°C |
| Plumbing System Requirements | Normal Pressure System |
| Working Pressure Range | Min: 1 bar; Max: 5 bar (Min 2 Bar for best performance) |
| Maximum Hot Water Temperature | Maximum Boiler Temperature 100 °C Hot Water Flow 98 °C |
| Maximum Static Pressure | 4 bar |
| Flow Type | Dual |
| Isolation Included | Yes |
| Power Rating | 1.5kW |
| Electrical Supply Requirements | 220V-250V |

FILTER SPECIFICATION

| | |
|-------------------------------|---------------|
| Product Type | Carbon Filter |
| Maximum Flow Rate | 3.8 l/m |
| Maximum Pressure | 2.5 Mpa |
| Applicable Temperature | 4-38°C |
| Life Cycle | 7,200 litres |

Filtrata filters are easy to install and replace, and provide a number of benefits. These include the reduction of the chlorine taste of tap water and the removal of limescale, magnesium, lead, protozoan cysts, organic compound, and particles. It also reduces sediment to 1 micron.

BEFORE INSTALLATION

Please note that the Filtrata must be installed by a qualified electrician and plumber to avoid invalidating your product guarantee.

Prior to installation, please ensure that you've received all the listed parts and check that all the parts are free from damage - parts reported as damaged after installation will not be replaced.

Isolation valves should be fitted as close as possible to the inlet connection for ease of maintenance.

To prevent debris from blocking the filter, you must flush out the plumbing system before installation.

Please ensure that you have a minimum water pressure of 1 Bar and a maximum water pressure of 5.0 Bar in order to install this tap.

You will need an electric socket close to where the tap is being installed.

Ensure that there is adequate space between the tap and the surrounding splashbacks and surfaces to fully operate the tap levers.

You should also prepare a standard 35-40mm hole in the designated sink or worktop.

TOOLS YOU WILL NEED

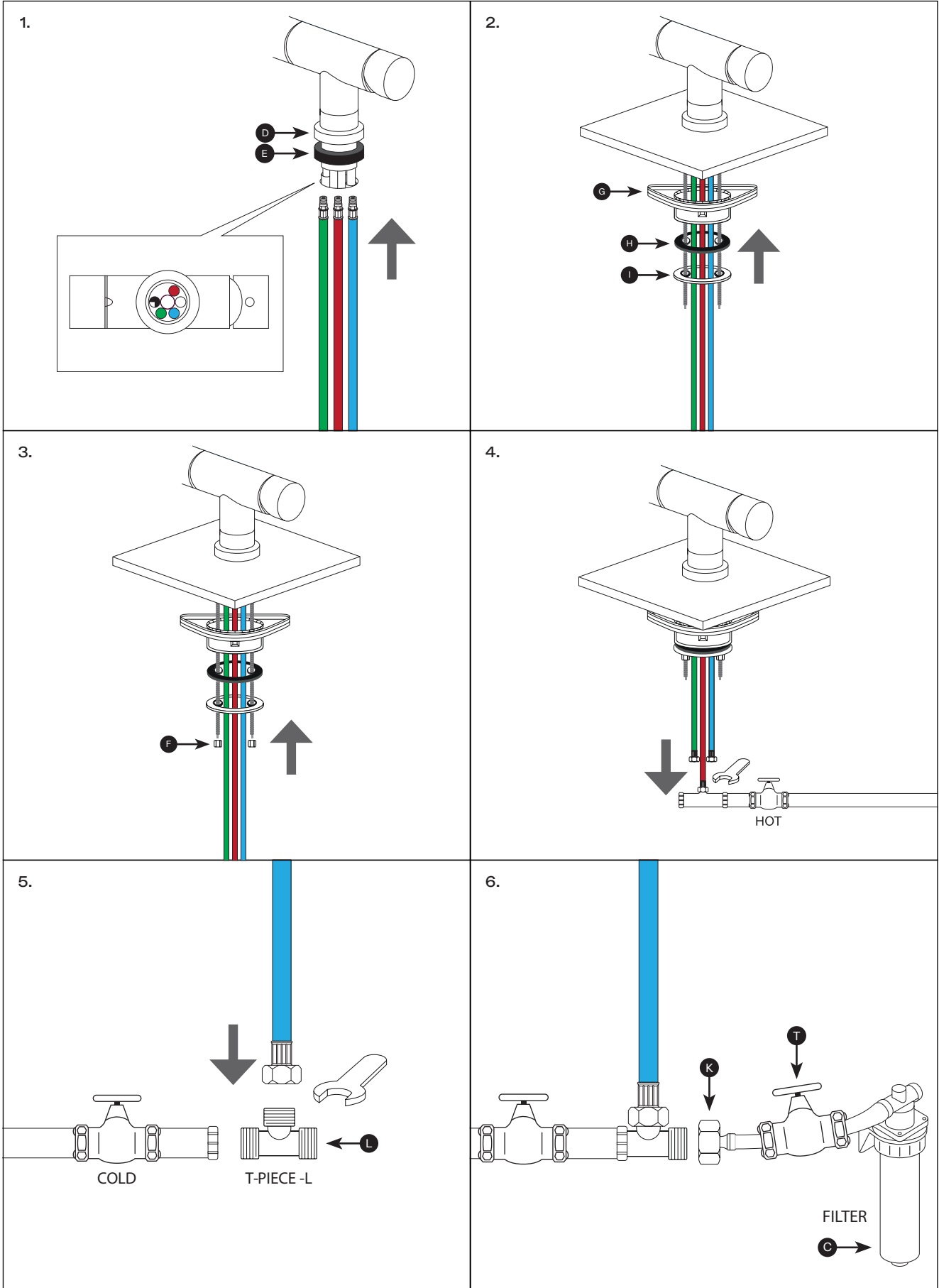
- A Pencil
- B Drill
- C Cross Head Screw Driver
- D Flat Head Screw Driver
- E Pipe Cutter
- F Pipe and Wire Detector
- G Pliers
- H Tape Measure

INSTALLATION STEPS

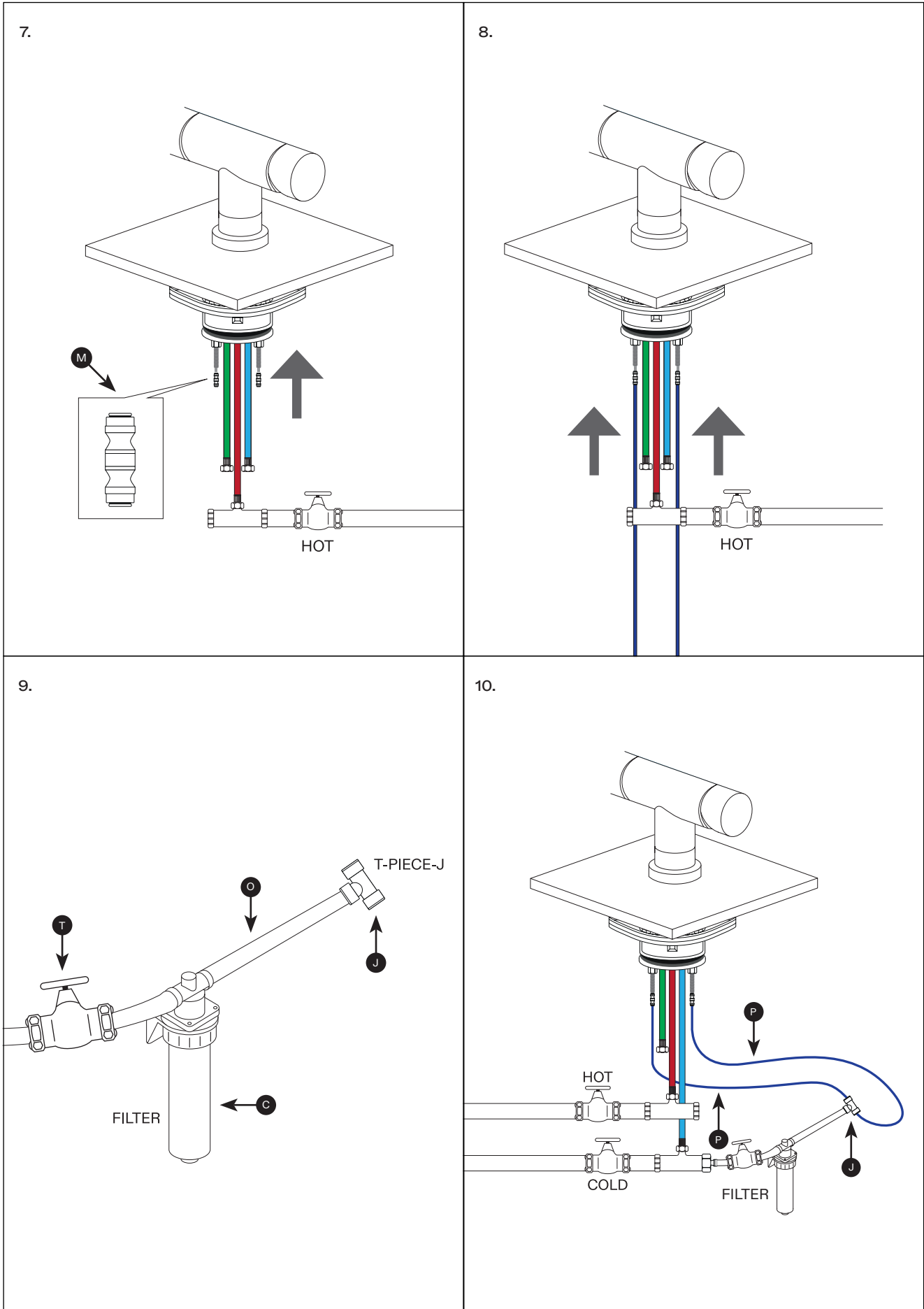
1. Feed the hot, cold and boiling hoses through baseplate (D) and base seal (E), then through the pre-drilled 35-40mm hole. Next, put the tap in position in the 35-40mm hole.
2. Working inside the cabinet, slide the tap stabilising ring (G), tap locking seal (H) and tap fixing plate (I) over the hoses and the two brass threads coming from the tap. To hold everything in place, the stainless threads should be placed into the holes of parts (H) and (I).
3. Screw the two locking nuts (F) onto the stainless threads. Check that the tap is in the correct position before tightening the two nuts using the nut spanner provided (R).
4. Position the boiler (B) in a suitable location within the cabinet. Fix the filter bracket to the wall or side of the cabinet, ensuring the pipes from the tap and boiler can reach it. Connect the hot water flexible hose (N) to the hot water mains isolation valve.
5. Connect the G ½ inch T-piece (L) to the cold water isolation valve, then connect the cold water flexible hose (N) to the top of the T-piece. Fit the white G ½ inch (Female) and PE tube adapter onto the brass T-piece (L).
6. Cut two lengths of the white PE tube (O). Connect one length to the PE tube adapter and feed the other end of the piece into the isolation valve (T). Connect the second length to the other end of the isolation valve (T) and feed that into the filter.
7. Push both ¼ inch quick connectors (M) onto the stainless threads coming from the tap.
8. Connect the two blue PE pipes (P) to the connectors (M).
9. Cut a suitable length of white PE pipe (O), and connect one end of it to the filter and the other end to the ¼ inch T quick connector (J).
10. Connect the blue PE pipes to either end of the ¼inch T quick connector (J).
11. Connect the green flexible pipe coming from the tap to the blue inlet on the top of the boiler, and use an adjustable spanner to tighten. Slide the pipe clip over the clear silicone hose coming from the tap and connect the tube to the red outlet on the top of the boiler. Slide the clip down to keep the hose in place.

Once you've carried out the above steps, you must prime the installation for use. To do this, turn the boiling water lever until the water starts flowing out, check all connections for leaks, and once you're satisfied there are no leaks, you can turn on the power to the boiler. The installation is now complete.

Installation Guide

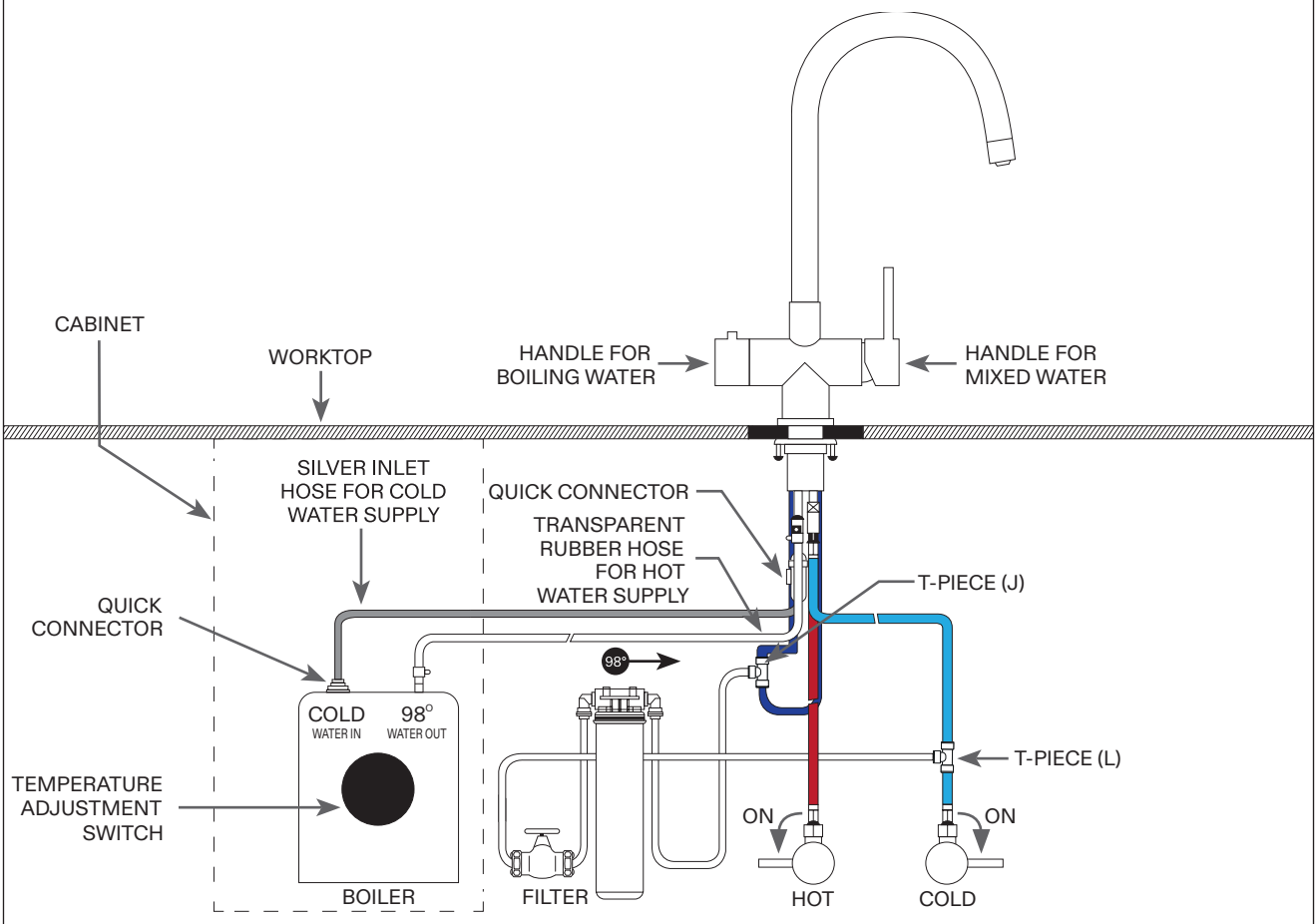
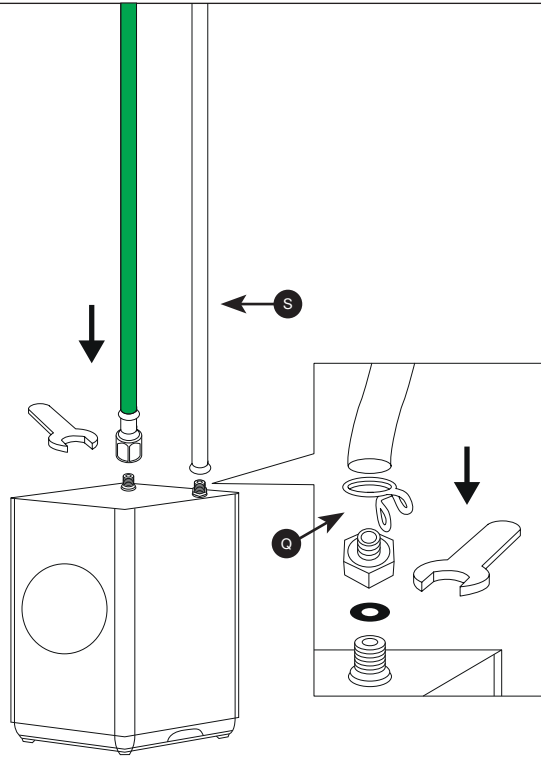


Installation Guide



Installation Guide

11.



USING THE FILTRATA TAP

Get instant access to the water of your choice with the Filtrata's easy-to-use design - just follow the markings on the lever:

Hot and cold water

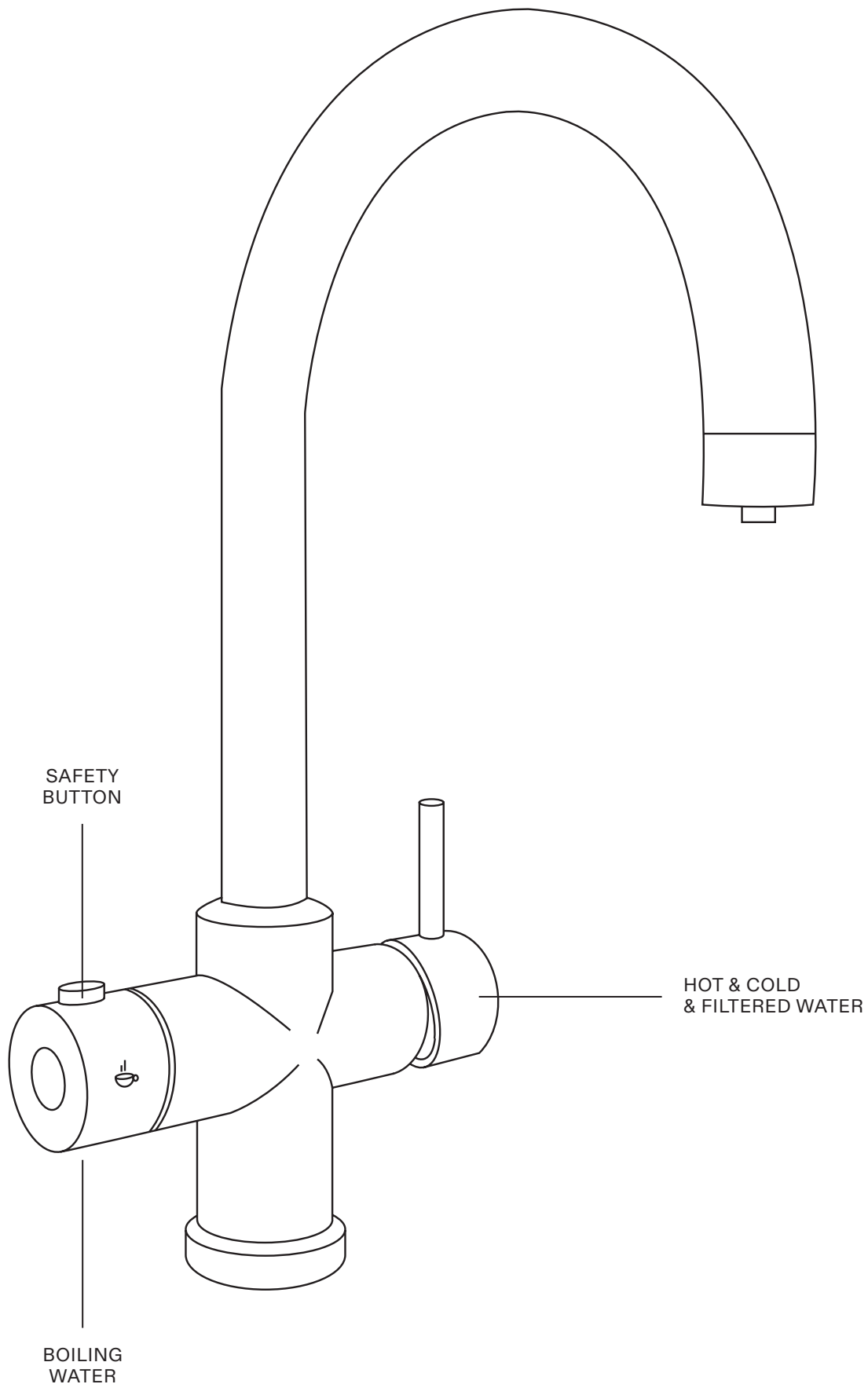
For standard hot and cold tap water, push the right-hand lever to the right, then pull it towards you for hot water and push it backwards for cold water.

Cold filtered water

Simply pull the right-hand lever towards you.

Boiling water

Press the safety button on the left-hand lever, push the lever backwards, and keep the lever in that position until you have the desired amount of boiling water.



SAFETY
BUTTON

HOT & COLD
& FILTERED WATER

BOILING
WATER

OPERATING THE FILTRATA BOILER

To turn the boiler on, tap the on/off button once. To turn the boiler off, press and hold the on/off button.

To set the water temperature, tap the temperature button to scroll through different temperature settings. When the change temperature display shows the temperature you'd like to select, tap the confirm button to set it. If you don't tap the confirm button within five seconds, the temperature will revert back to its previous setting.

Please note that the temperature indicator always shows the current temperature of the water in the boiler, while the change temperature display shows your desired temperature.

While the water is heating to the desired temperature, the heating indicator will illuminate and the heating display will animate. When the water in the boiler reaches the desired temperature, the hot indicator will illuminate and the heating display will change to a solid light.

If the change temperature display flashes 'E3', the boiler is working but has insufficient water. Tap the on/off button, then prime the boiler as described in the installation instructions.

FILTER SIGNAL AND RESET

There are six lines under the Filter signal that light up automatically when using the boiler for the first time. Each line represents one month's usage. After six months' usage, all lights will turn off and a notification alarm will sound six times and then twice every two hours to remind you to change the filter - please refer to page 15 on how to change the filter. Once you have installed the new filter, firstly turn the boiler off by pressing and holding the on/off button, then press buttons A and C together for three seconds. This will reset the alarm and the filter indicator.



- A Temperature Control
- B On/Off
- C Confirm Temperature
- D Temperature Display
- E Filter Indicator
- F Heating Indicator
- G Set Temperature Indicator
- H Heating Display

CARE INSTRUCTIONS

To ensure your Filtrata provides seamless service for many years to come, please observe the following care guidelines. Improper maintenance will void your product guarantee.

- ✗ Do not use acidic or abrasive cleansers
- ✗ Do not use abrasive cloths

- ✓ Rinse the surface with clean water
- ✓ Dry with a soft cloth
- ✓ To remove surface marks, please use a neutral cleanser without coarse grained powder

Please make a note of the installation date and ensure that the Filtrata filter is changed every 3-6 months (depending on water hardness) to protect the tank from limescale build up. In hard water areas the filter may need to be replaced more often. See boiler for further maintenance instructions.

Replacement filters are available at www.lusso.com

To activate your guarantee visit lusso.com

CHANGING THE FILTER

1. To change the filter, use the isolator valve (T) to isolate the water supply, and turn off the power to the boiler.
2. Next, place a bowl under the filter and turn it anti-clockwise to release it.
3. Dispose of the filter and replace it with the new one.
4. Turn on the water supply and power.
5. Please see page 13 for guidance on how to reset boiler after changing the filter.

TROUBLESHOOTING

If your Filtrata tap isn't working correctly, please check the table below for guidance on how to resolve potential issues. If the problem persists, our team is on hand to help - please contact us on 020 3370 4057.

| | CAUSE | REMEDY |
|--|---|--|
| No boiling water. | The boiler is empty. | Follow the instructions for priming the installation on page 7. |
| | The boiler isn't holding water. | Check connections for any leaks and contact our Customer Service team. |
| Touch controls flashing red. | Boiling water has been running for too long. | This is a safety feature to prevent overheating. To reset turn the power off, wait for two minutes, then turn the power back on. If the problem persists, please contact us. |
| | There has been frequent switching between cold and boiling water over an extended period. | |
| Water or steam is spitting from the spout. | The unit is boiling. | Press the boiling water touch control handle and release the water. |
| | | Lower the water temperature setting. See page 14. |
| | | Check the aerator at the end of the spout isn't blocked. |
| | | Follow the priming the installation section on page 7 to remove any airlocks. |

TROUBLESHOOTING CONTINUED

| FAULT | CAUSE | REMEDY |
|-----------------------------------|---|--|
| Water is not hot. | The boiler is unplugged. | Make sure the appliance is plugged in and the display is lit. |
| | | Make sure the circuit breaker and fuse are working correctly. |
| | The boiler is not switched on. | Ensure the boiler is plugged in and turned on as described on page 7. Wait until the heating display stays lit before use. |
| | Water hasn't finished heating up. | |
| Water is too hot. | The water temperature is set too high. | Lower the water temperature setting. See page 13. |
| Water is dripping from the spout. | The expansion chamber isn't draining correctly. | Run 500ml of water from the tap to clear and prime the system. Avoid drawing off less than 150ml per use. |

| FAULT | CAUSE | REMEDY |
|--|---|---|
| Water is dripping from the spout - Continued. | The spout is blocked. | Using aerator key provided, unscrew the aerator, clean with a non-abrasive cleaner, such as washing up liquid, warm water and a soft cloth. |
| Slow flow from the spout. | Water filter needs changing. | Change the water filter (see page 15). Change the filter every 3-6 months (depending on water hardness) or your warranty will be void. |
| Water doesn't flow straight away. | As a safety feature, water is drawn into the tank after each use to prevent accidental scalding. There will be a slight delay before the boiling water appears. | After you've run a large volume of water, wait a few minutes for the new water to heat up, and make sure the lever is back in its original position during this time, and then try again. |
| No water flowing. | Closed or partially closed isolation valves. | Make sure isolation valves are fully open. |
| | Flexible hoses kinked or blocked. | Ensure pipes are not twisted or restricting flow. |
| | Boiler blocked. | Contact Lusso on: 020 3370 4057. |



If you need any further guidance, our Customer Service team is on hand to help - call 020 3370 4057.

FIND OUT MORE



LUSO

Customer Care: 020 3370 4057

International: +44 20 3370 4057