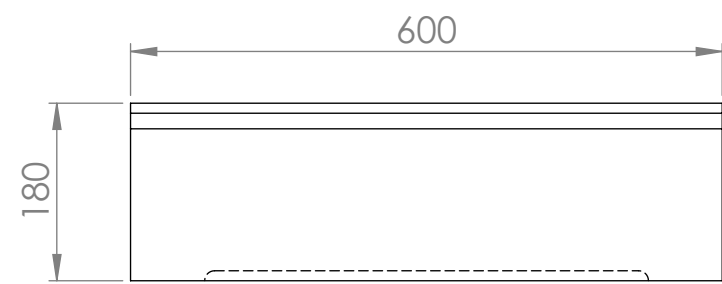
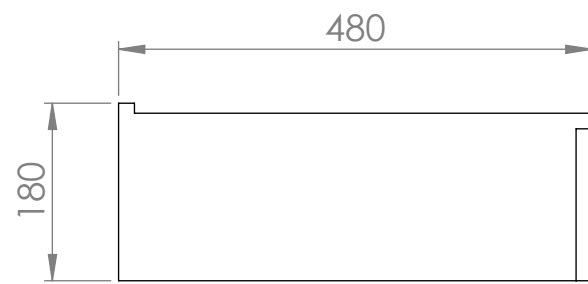


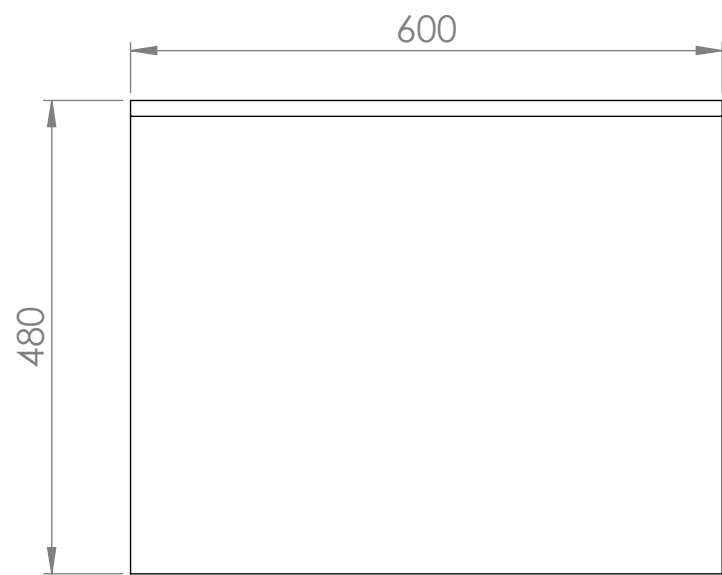
Front View



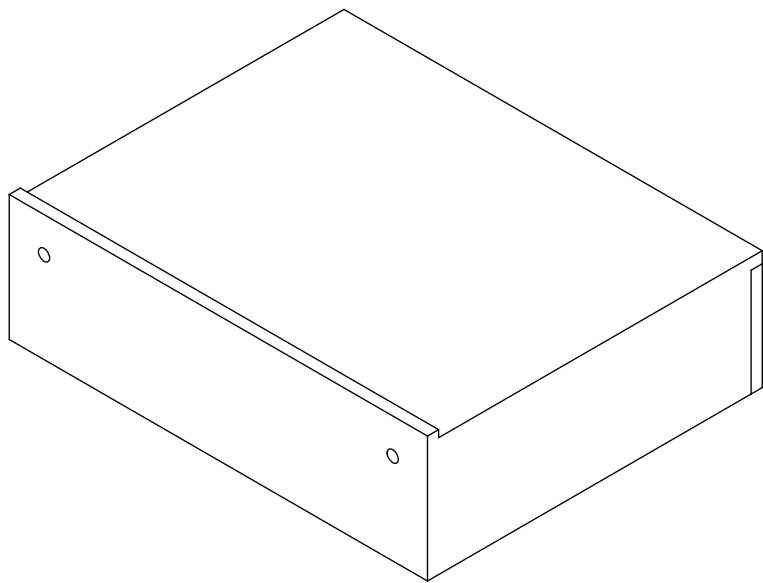
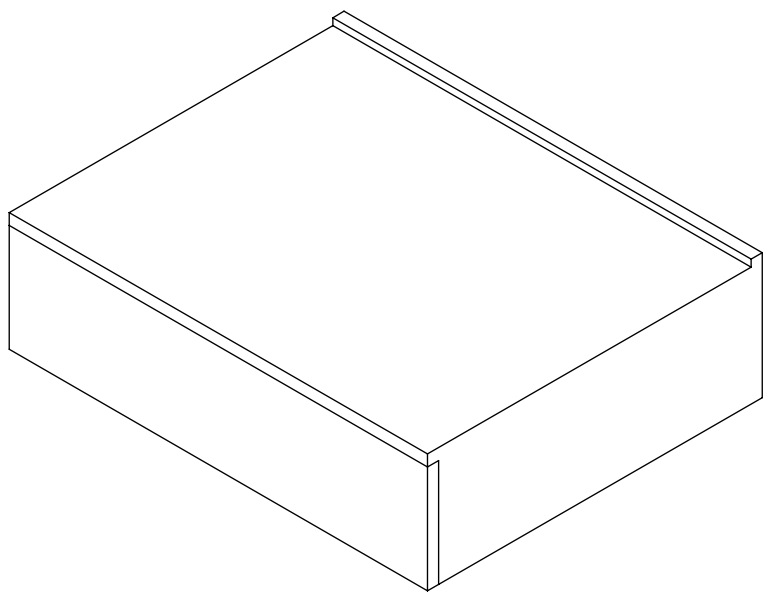
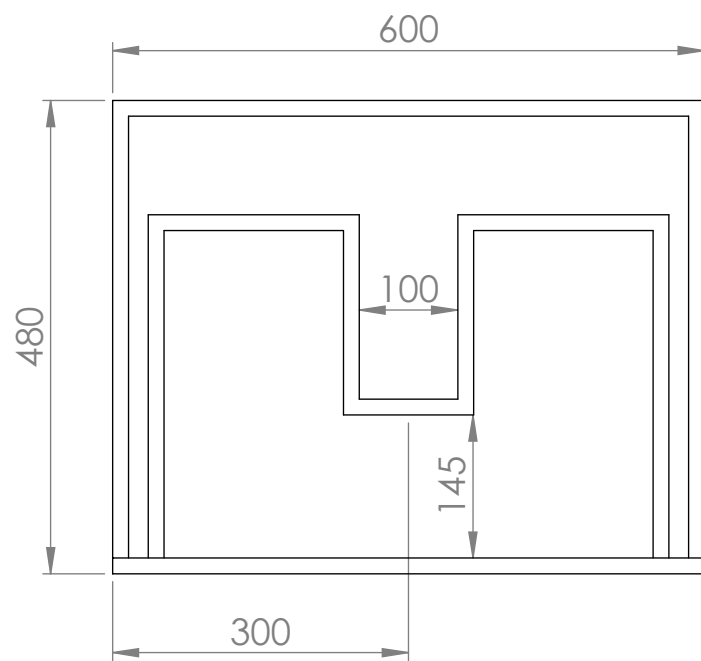
Side View



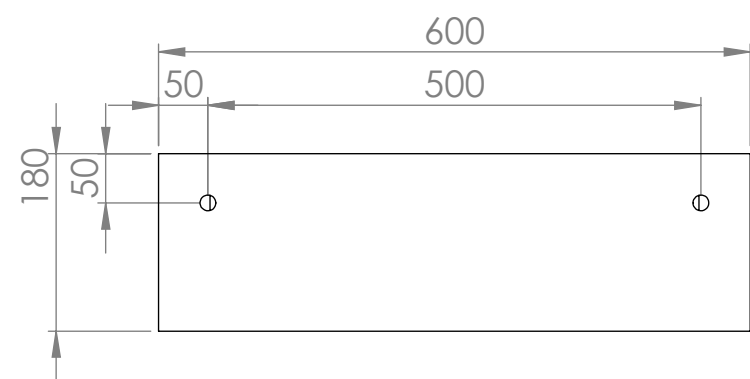
Top View



Top View - Section View



Back View



| | | |
|------|--------------|-----------------|
| LUSO | Product Name | Edge |
| | Material | Stone Resin |
| | Size, mm | 600 x 480 x 180 |

*All dimensions provided in millimeters.
All vanity units are supplied with no tap hole (s). If you require a tap hole, you will need to use a standard 38mm hole-saw drill attachment.*