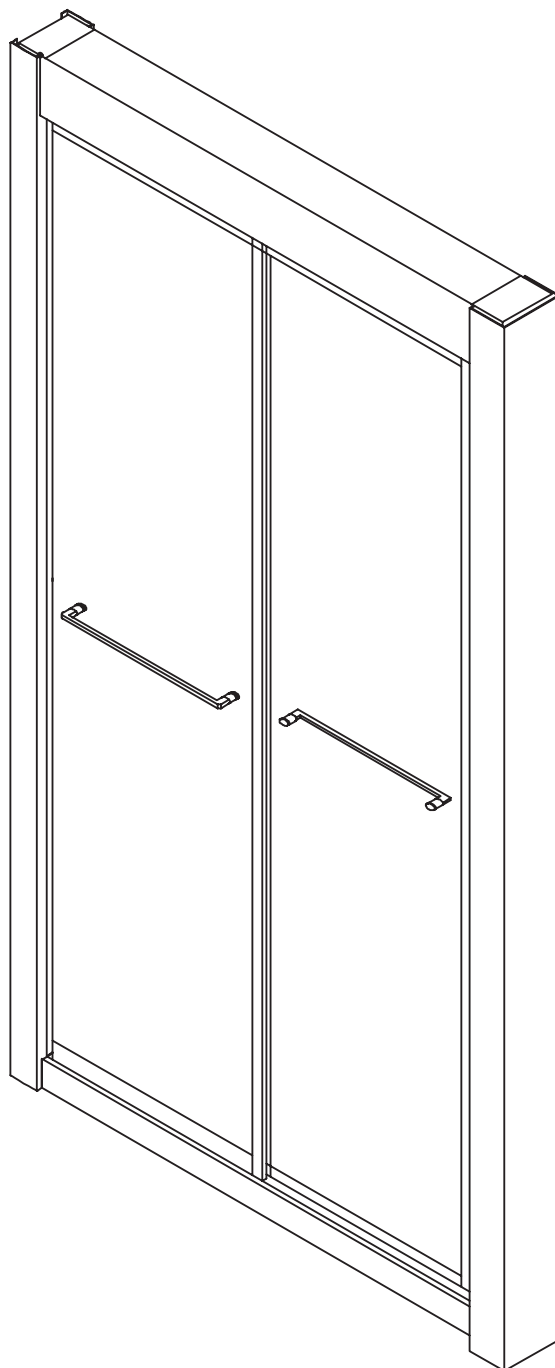


DOLCE

YP330

SLIDING DOOR WITH SOFT CLOSE



EN
INSTALLATION
AND CARE GUIDE

Please retain for future reference

LUSO

INTRODUCTION

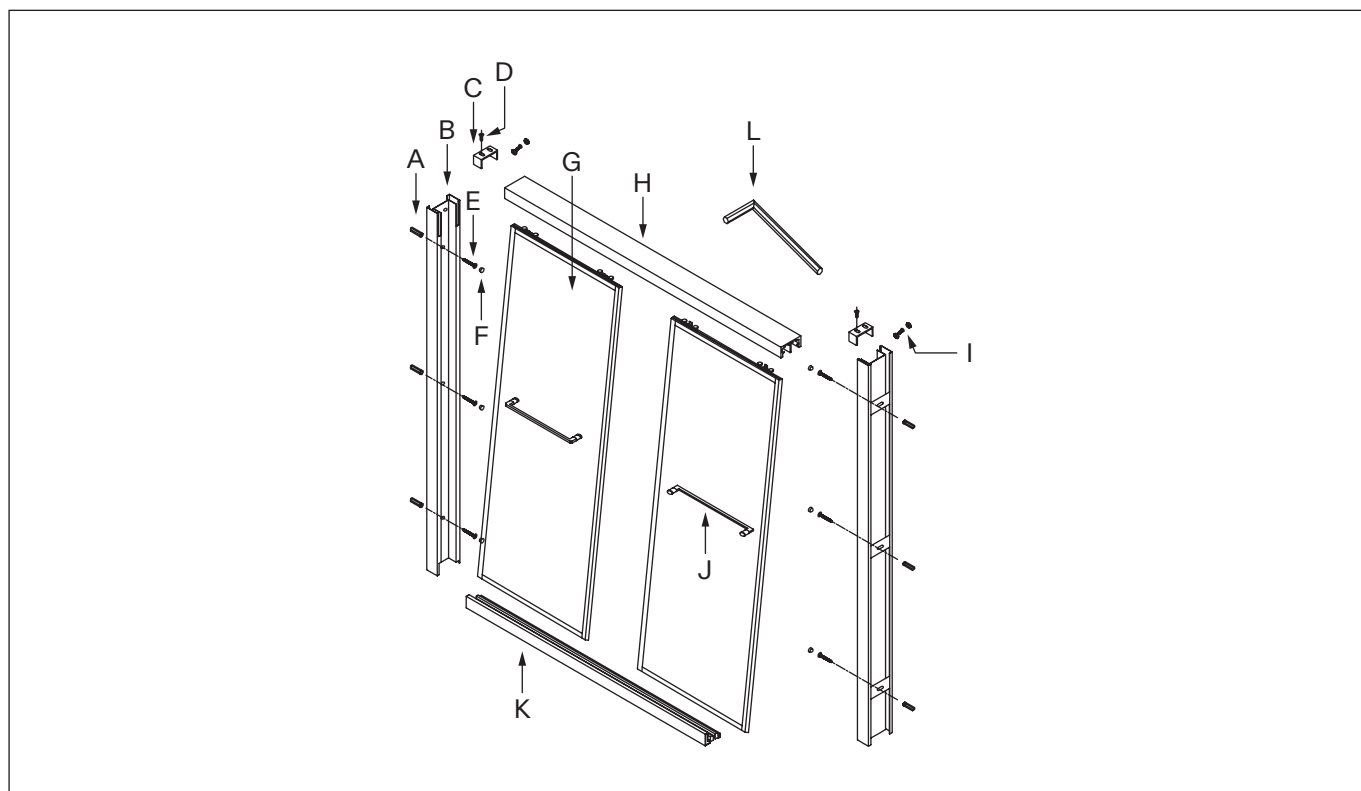
Thank you for purchasing the Dolce Sliding Door With Soft Close.

Please read this guide carefully before installing, using and cleaning this product, and retain it for future reference.

If you have any queries in relation to this product or guide, please contact our Customer Service team on 020 3370 4057.

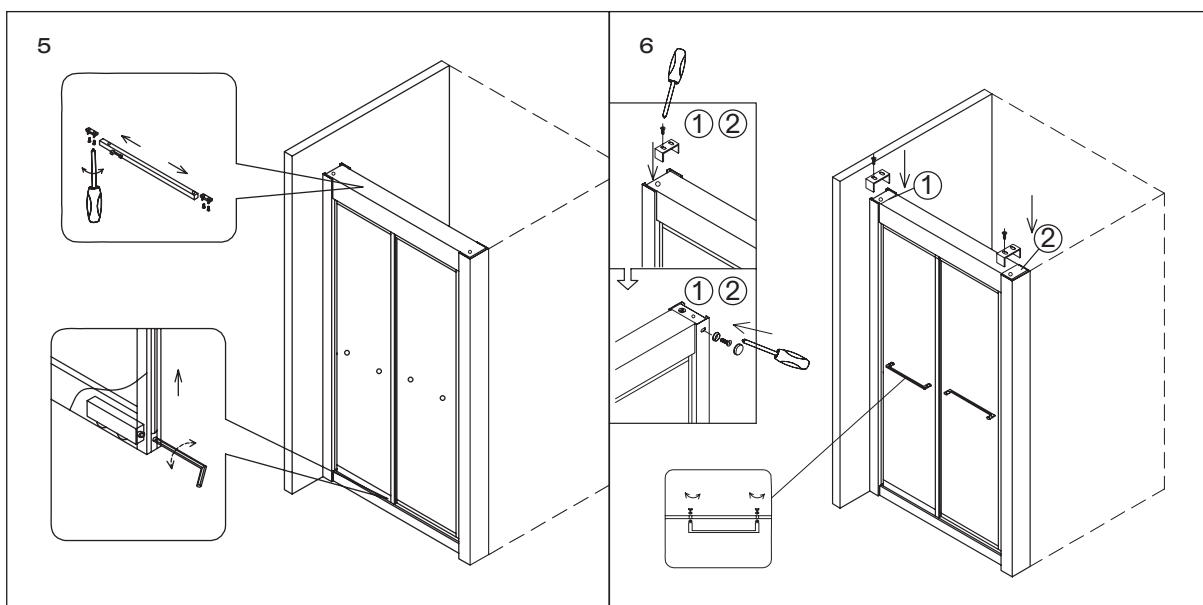
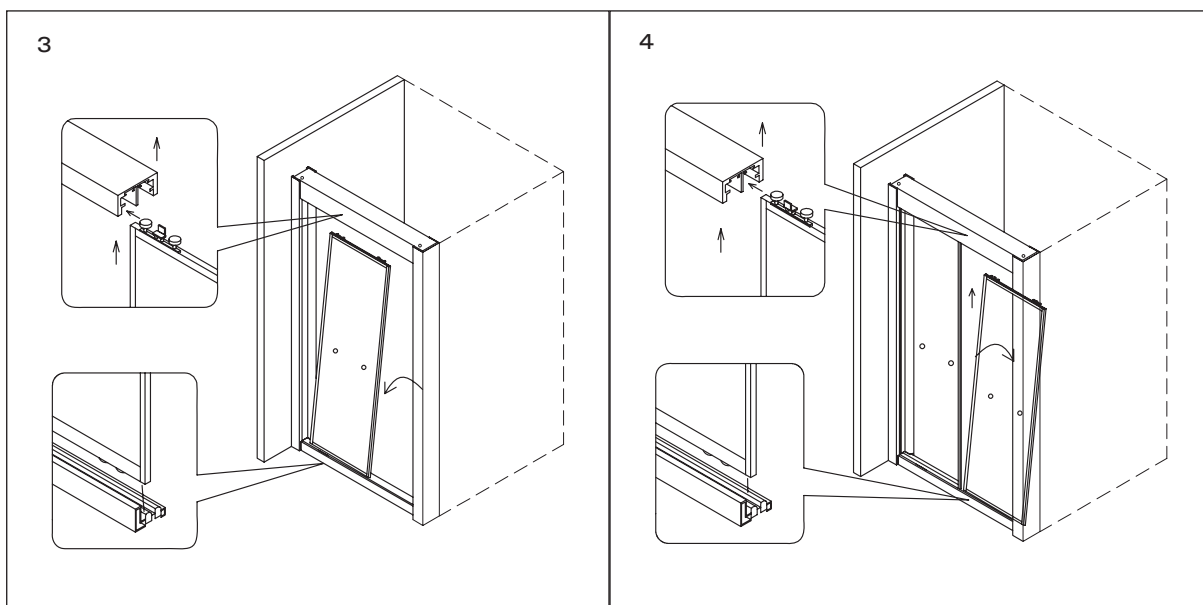
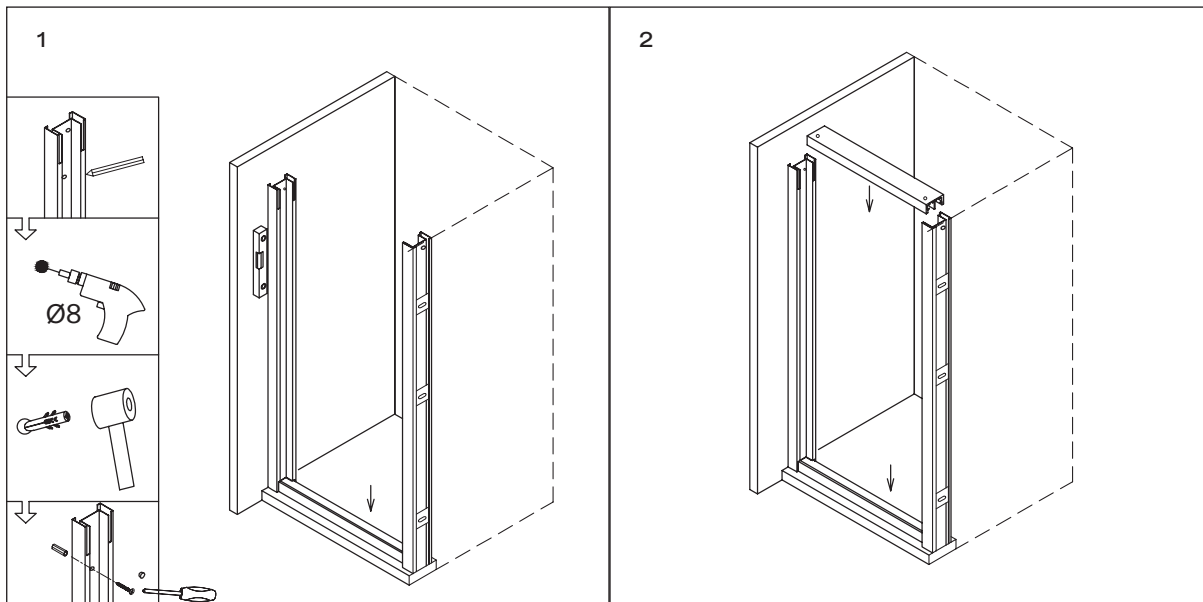
PRODUCT KIT

A	Wall Plugs (x6)	I	Twin Decorative Caps (x2)
B	Wall Posts (x2)	J	Handles (x2)
C	Clips (x2)	K	Bottom Track
D	Clip Screws (x4)	L	Allen Keys (x2)
E	Screws (x6)		
F	Decorative caps (x6)		
G	Sliding Doors (x2)		
H	Top Track		

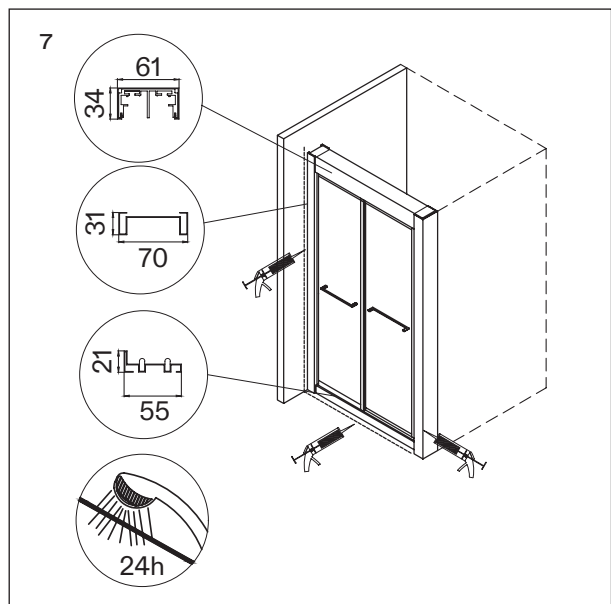


INSTALLATION STEPS

- 1** Position the bottom track onto the floor, fit the wall posts vertically onto it, and use a spirit level to ensure that they are vertically aligned. Once in place, mark the required drilling holes onto the wall with a pencil, move the wall posts aside, and drill the holes using an 8mm drill bit. Next, use a rubber mallet to lightly tap the wall plugs into the holes until they are flush with the wall, position the wall posts over the wall plugs, and secure them into place using the provided screws.
- 2** Sit the top track in place, as shown in figure 2.
- 3** Install the inner sliding door, as shown in figure 3.
- 4** Install the outer sliding door, as shown in figure 4.
- 5** Close the sliding doors, then use a screwdriver to adjust the buffer in the top track to tightly seal the doors. Next, lift up the door magnet strip, then adjust the bottom rollers with the provided allen key to balance the position of the two doors.
- 6** Fit the clips on both sides of the track, referring to figure 6 for guidance, and fix them into place using the provided clip screws. Install the handles on the front of the doors - in a central position - and tighten them into position using the allen key.
- 7** Reinforce the bottom track with clear silicone to complete the installation. Please note that the silicone must be completely dry before coming into contact with water, therefore we advise that you wait 24 hours after installation before using the shower and screen.



CONTINUED OVERLEAF



CARE INSTRUCTIONS

To clean and maintain the flawless finish of this product, please follow the below instructions. Improper maintenance will void your product guarantee.

- ✓ Rinse the surface with clean water or glass cleaner.
- ✓ Dry with a soft cloth.
- ✓ Remove surface marks with a neutral cleanser without coarse grained powder.

- ✗ Do not use acidic cleansers.
- ✗ Do not use abrasive cleansers or cloths.

Go to Lusso.com to activate your guarantee.

LUSO

Customer Care: 020 3370 4057

International: +44 20 3370 4057