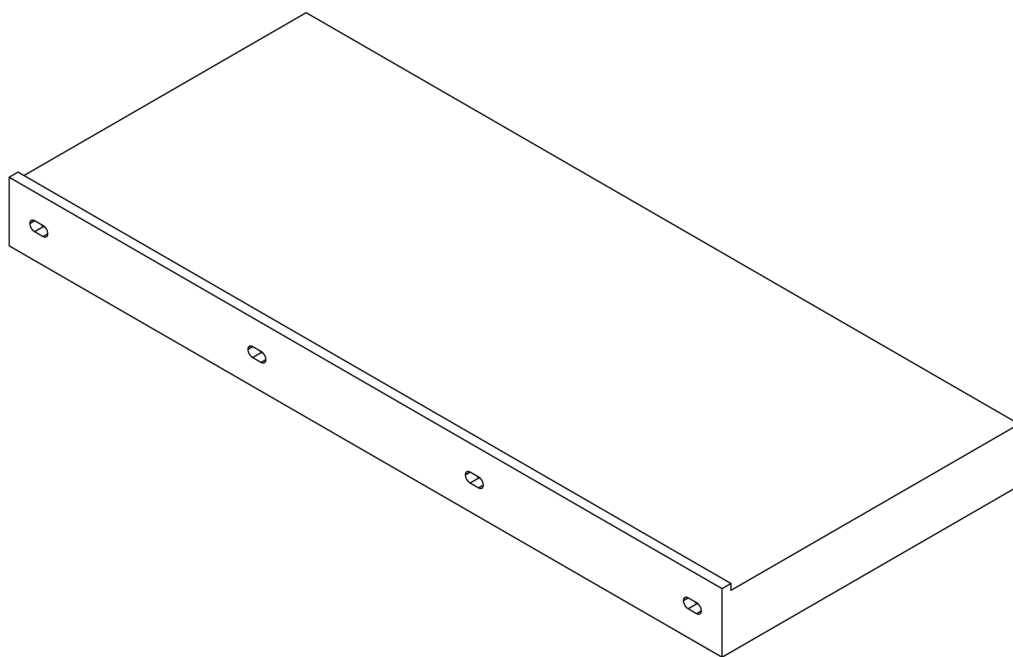
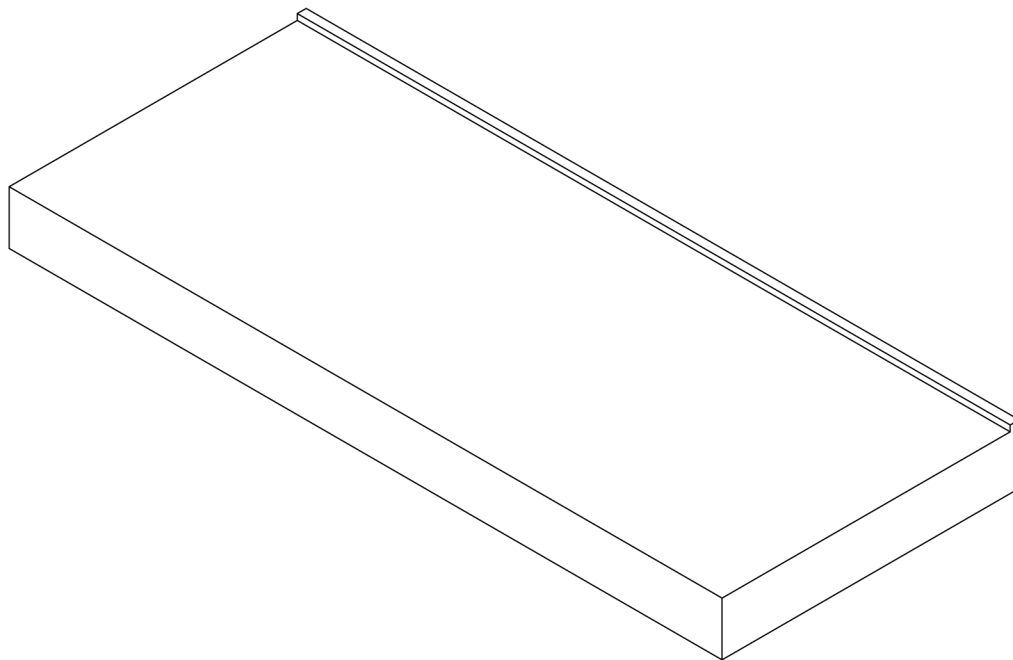


# Counter Top 1400

## Assembly Instructions

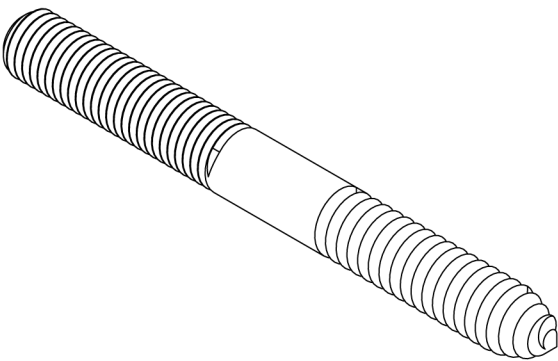


**LUSSO**  
S T O N E

# Components

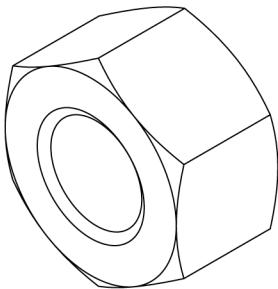
LUSSO  
S T O N E

Bolt



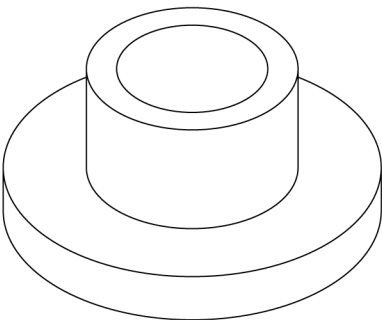
Amount: 4

Nut



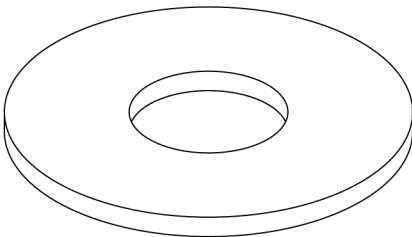
Amount: 4

Plastic Grommet



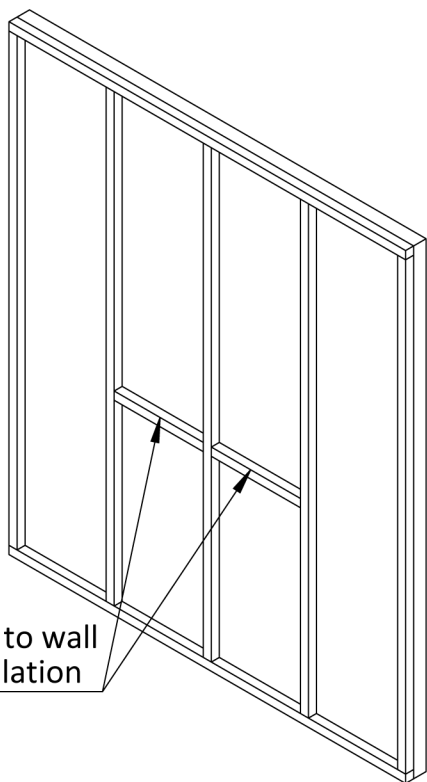
Amount: 4

Metal Washer



Amount: 4

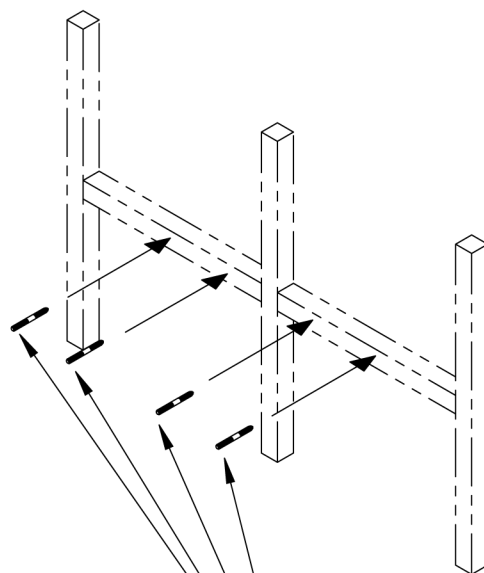
<1>



Add battens to wall  
before installation

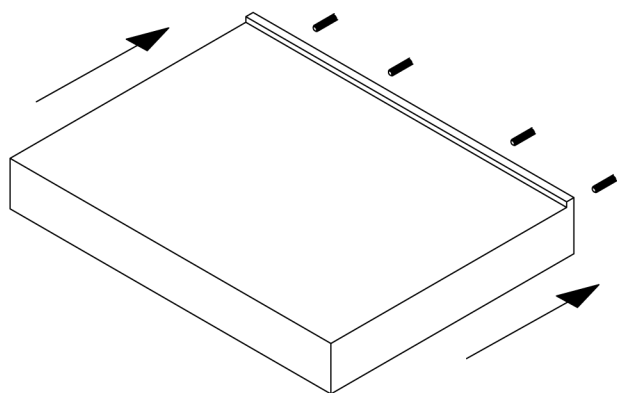
Note: Product can be mounted on  
both concrete or timber-framed walls.

<2>

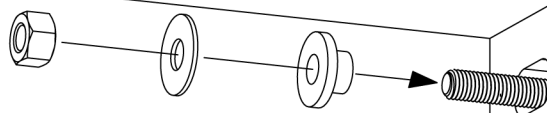


Add bolts to  
plasterboard

<3>

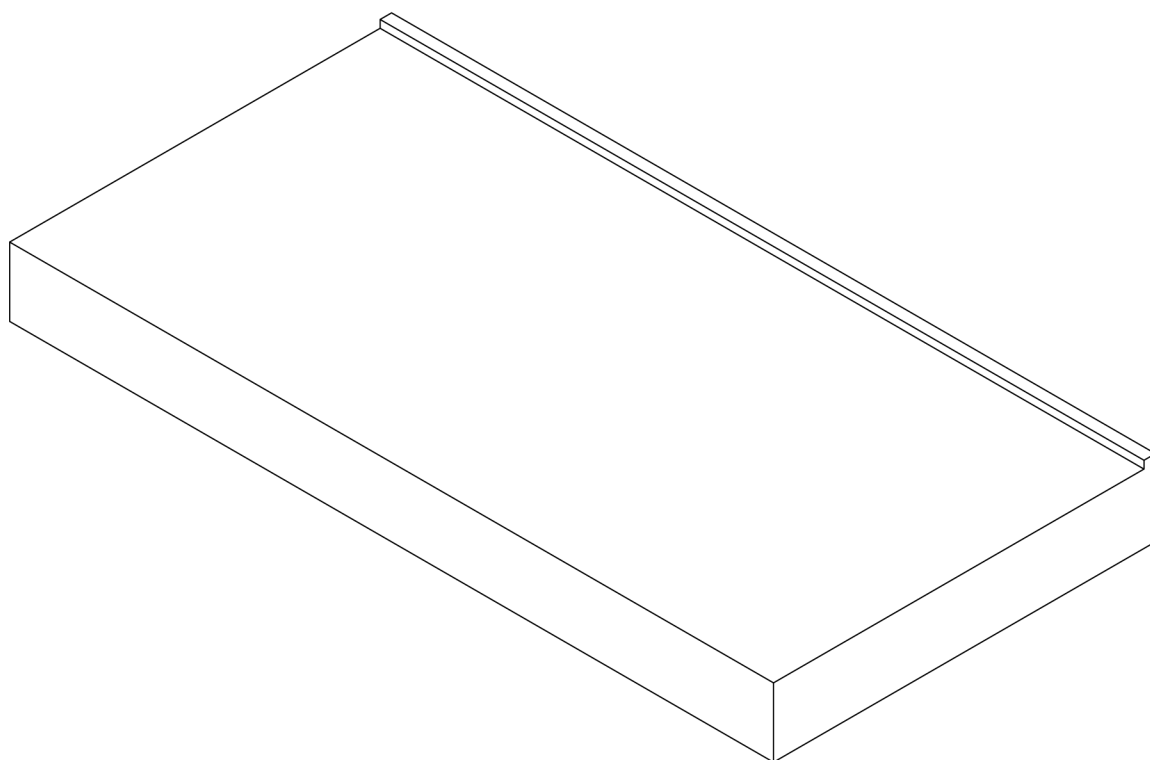


<4>



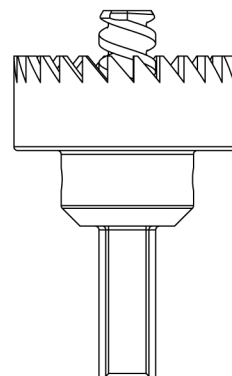
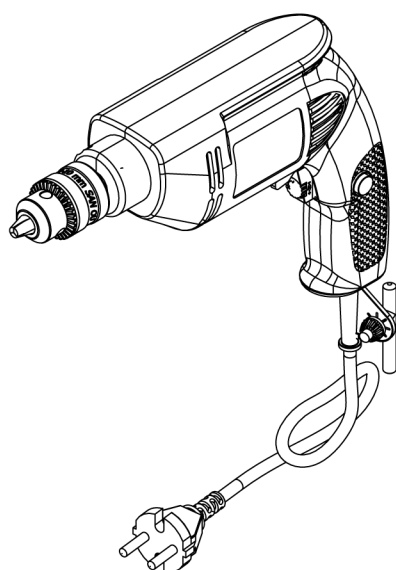
**LUSSO**  
S T O N E

**Assembly Complete**



**LUSSO**  
S T O N E

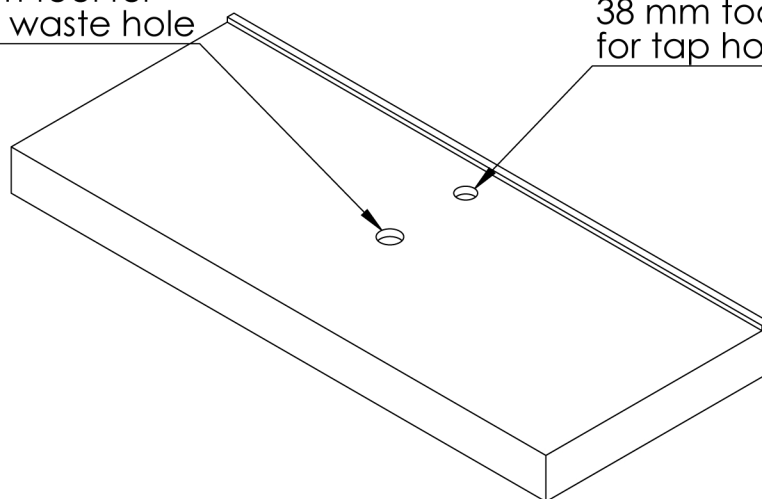
Holes for basin waste and tap can be added using standard hand drill and a hole cutting tool.



### Recomended Hole Cutting Tool Sizes

44 mm tool for  
basin waste hole

38 mm tool for  
tap hole



**LUSSO**  
S T O N E