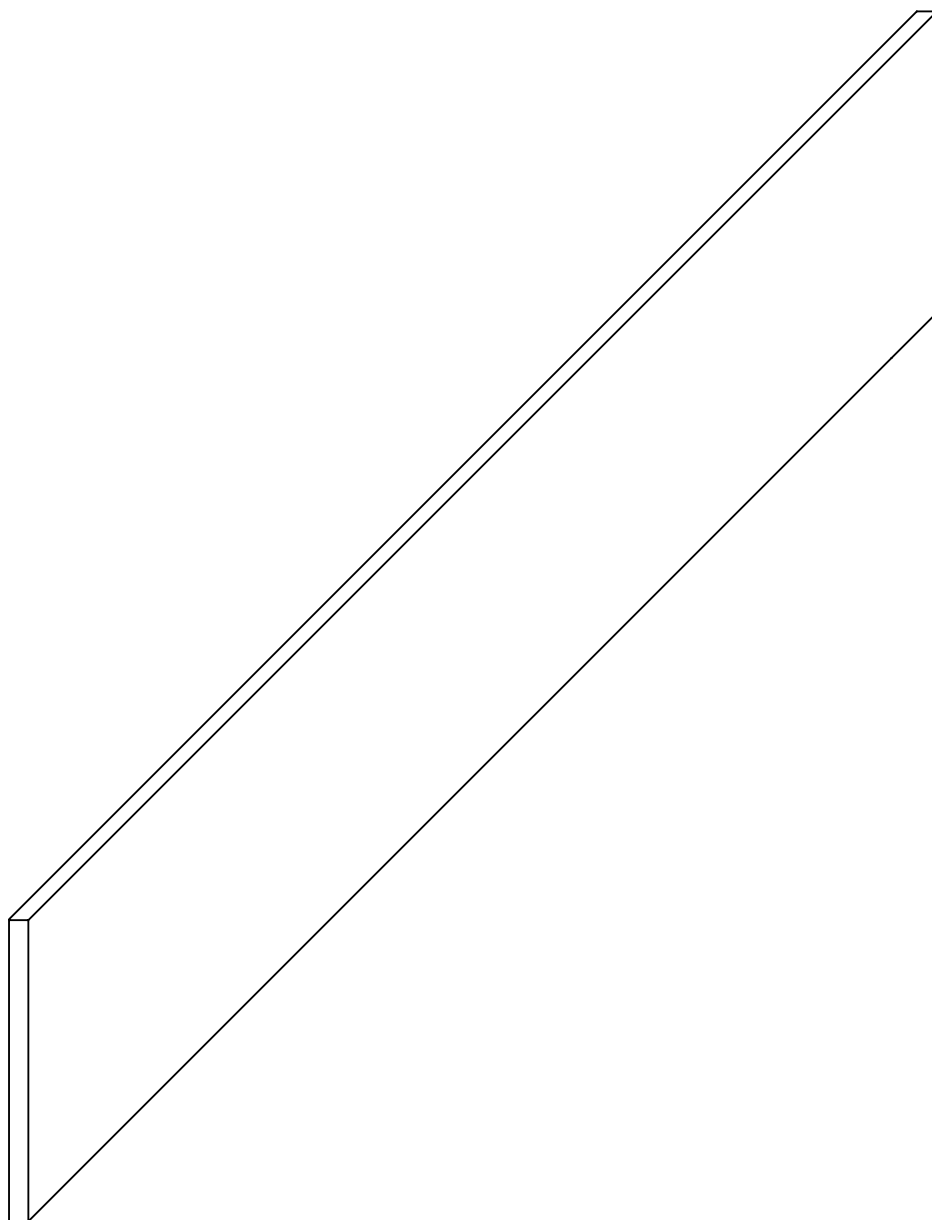


# CORTESE®

STONE UPSTAND



EN  
INSTALLATION  
AND CARE GUIDE

Please retain for future reference

# LUSO



# INTRODUCTION

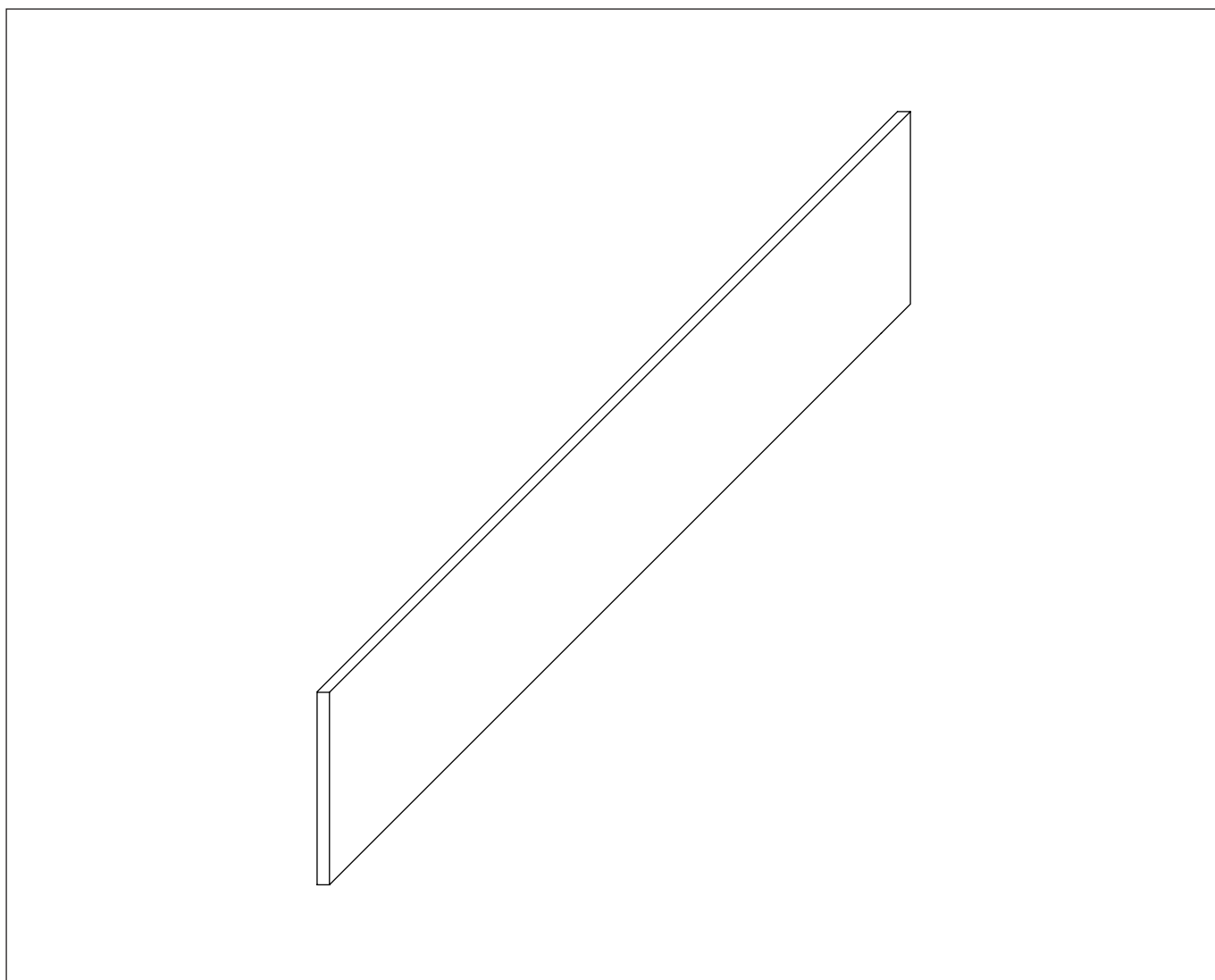
Thank you for purchasing this Cortese® Stone Upstand.

Please read this guide carefully before installing, using and cleaning this product, and retain it for future reference.

If you have any queries in relation to this product or guide, please contact our Customer Service team on 020 3370 4057.

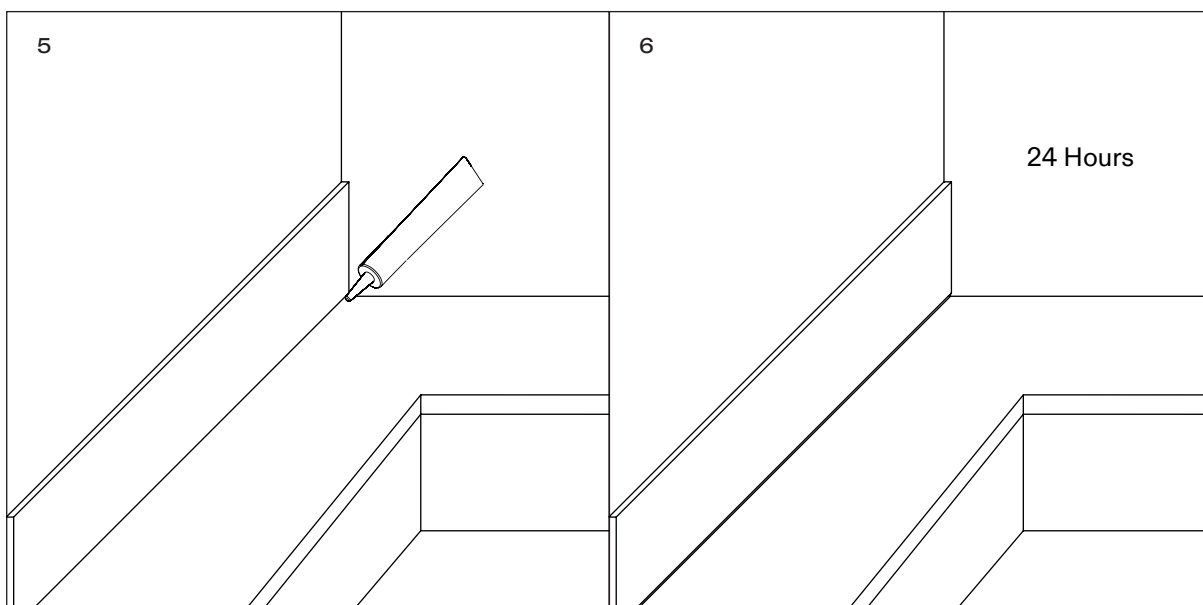
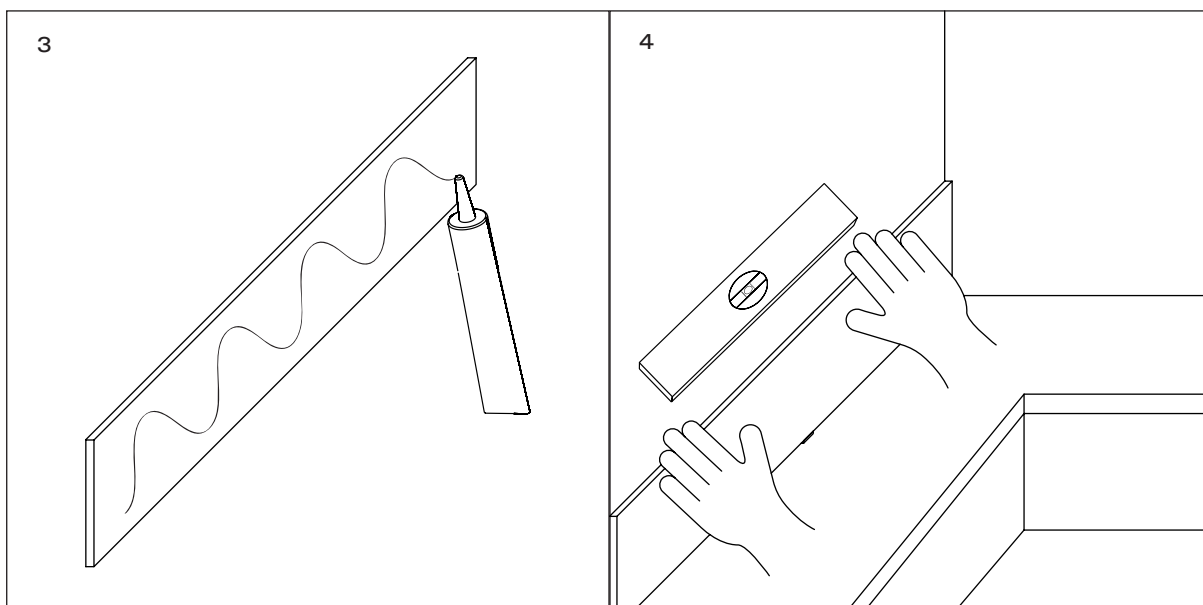
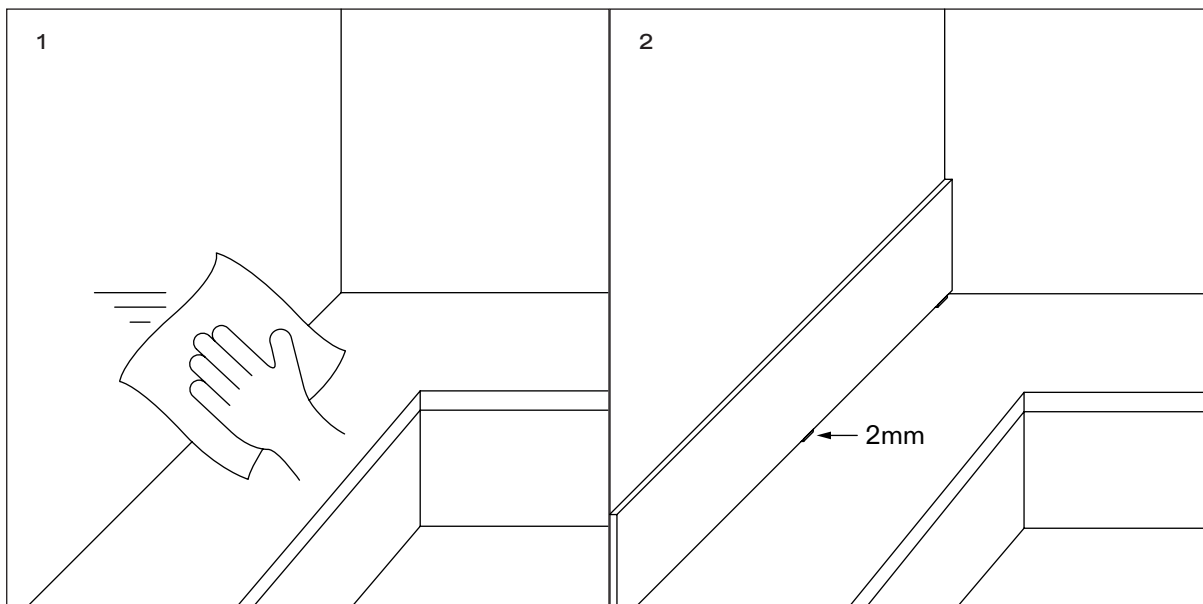
## PRODUCT KIT

**A** Upstand



# INSTALLATION STEPS

- 1** Prior to installation please ensure all appropriate surfaces have been cleaned.
- 2** Position the upstand against the wall maintaining a 2mm gap using spacers to ensure a clean fit.
- 3** Apply a zigzag bead of adhesive to the rear face of the upstand. Do not bond the upstand to the worktop and only to the wall.
- 4** Press the upstand firmly against the wall using a level to check alignment and wipe off any excess adhesive with a clean, damp cloth and allow it to fully cure.
- 5** Once the adhesive has cured remove the spacers and apply a bead of neutral cure silicone in the gap between the upstand and the worktop.
- 6** Avoid exposing the sealed area to water or cleaning for at least 24 hours.



# CARE INSTRUCTIONS

To clean and maintain the flawless finish of this product, please follow the below instructions. Improper maintenance will void your product guarantee.

- ✓ Clean the upstand immediately after use using warm water and a neutral detergent.
- ✓ Dry with a soft cloth.
- ✓ Remove scratches and stains with a polishing kit, or a wet and dry sandpaper pad for matte stone basins.
  
- ✗ Do not use acidic or abrasive cleansers.
- ✗ Do not clean with a concentrated bleach or shampoo.
- ✗ Do not use scouring pads or other abrasive cleaning tools.

Go to [Lusso.com](https://Lusso.com) to activate your guarantee.



# LUSO

Customer Care: 020 3370 4057

International: +44 20 3370 4057