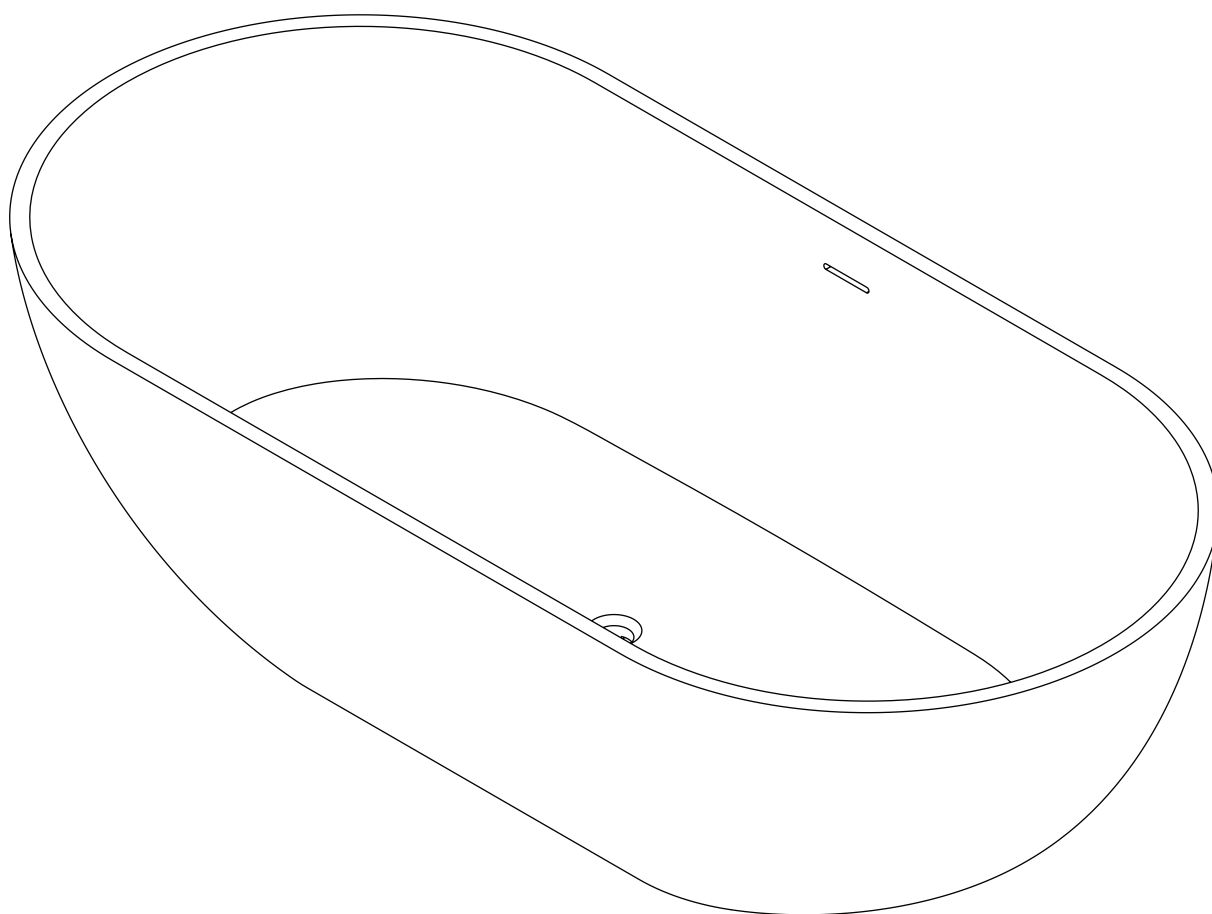


CORTESE®

FREESTANDING STONE BATH



EN
INSTALLATION
AND CARE GUIDE

Please retain for future reference

LUSO

INTRODUCTION

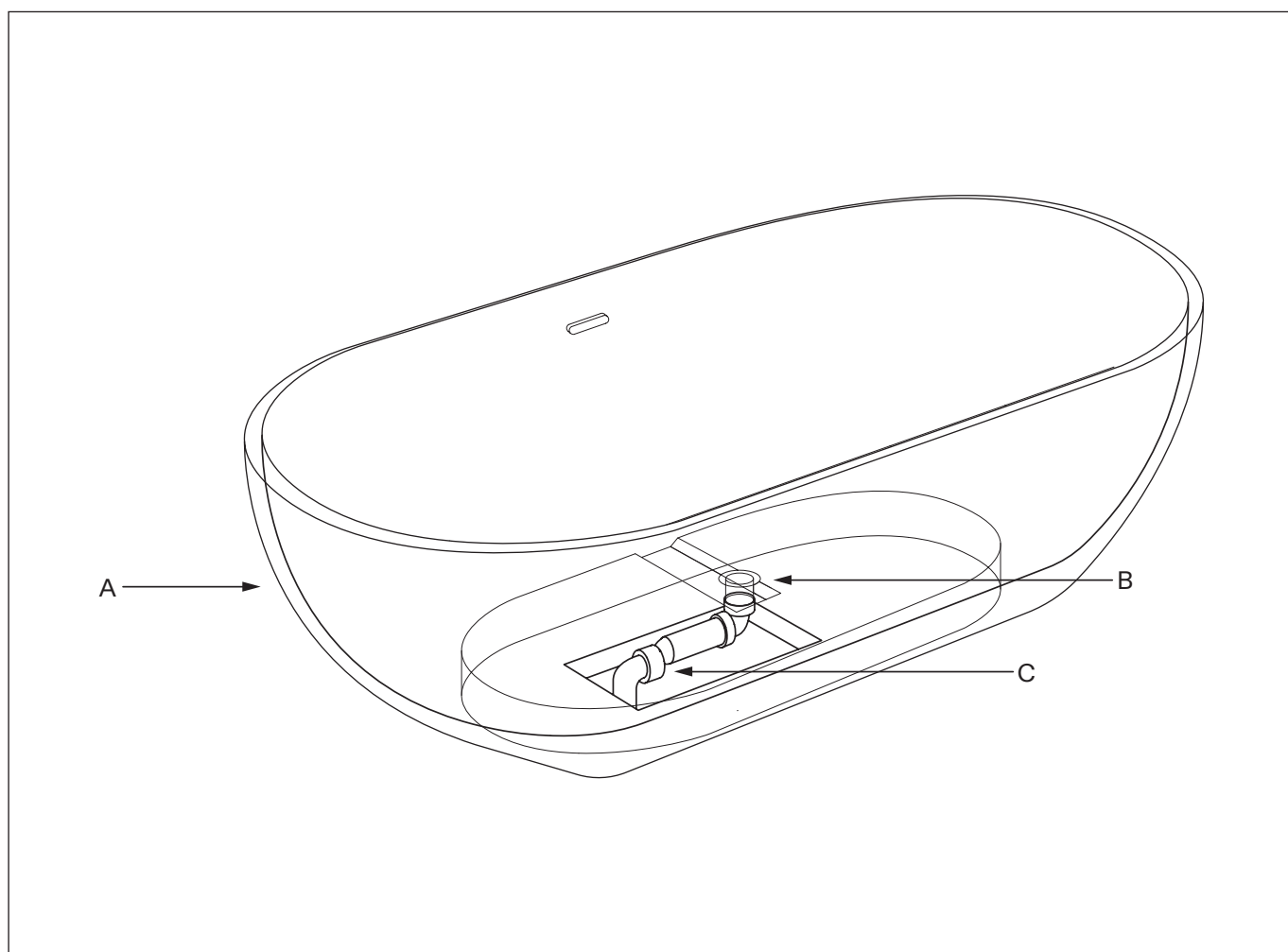
Thank you for purchasing this Lusso Freestanding Stone Bath.

Please read this guide carefully before installing, using and cleaning this product, and retain it for future reference.

If you have any queries in relation to this product or guide, please contact our Customer Service team on 020 3370 4057.

PRODUCT KIT

- A** Freestanding Bath
- B** Flexible Pipe
- C** Low Profile Waste Connector



BEFORE INSTALLATION

Prior to installation, please visit the product page of your chosen bath at [Lusso.com](https://lusso.com), and download the technical specification - this will provide the exact dimensions of the design, and show the position of the bath waste fitting.

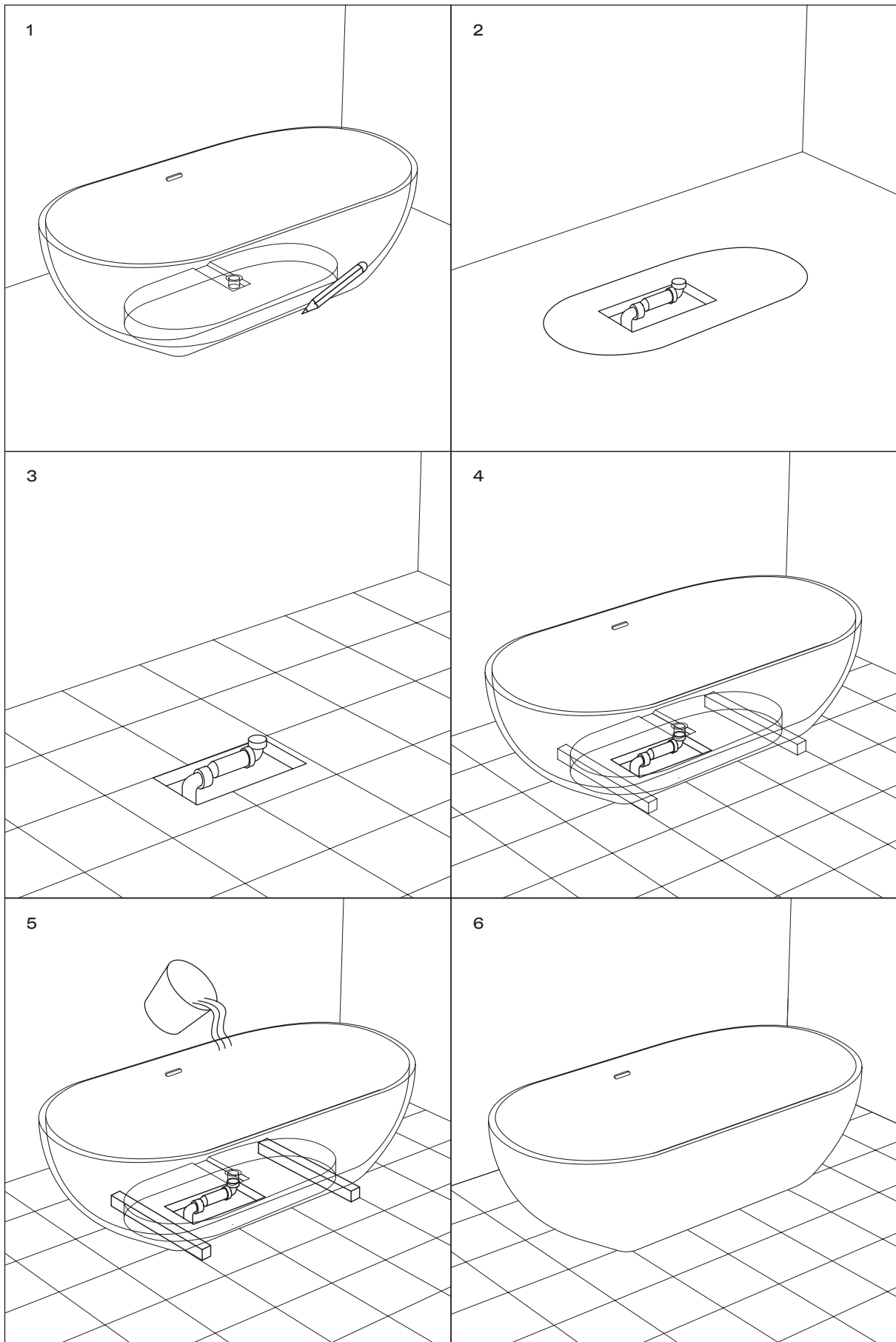
Please note that the provided waste connector and flexible pipe are designed to fit within the void area of the bath and the base of the floor, and that the pipe has a 40mm diameter and extendable length of 840mm for installation purposes. The pipe is compatible with all British standard bath traps, however we recommend the use of a HEPVO waterless trap with an inline adapter, which can be purchased from all major plumbing centres and DIY stores. We also recommend that this bath is installed by a fully qualified plumber.

To avoid scratching the surface of the bath during installation, please ensure that it is covered with a soft material throughout the process.

Before you begin, you should also check that the floor at the installation site is level and offers sufficient support for the chosen bath design. Additionally, we advise that all water is switched off at the mains, the installation area is waterproofed, and that you carefully check all measurements and components before proceeding.

INSTALLATION STEPS (WOODEN FLOOR)

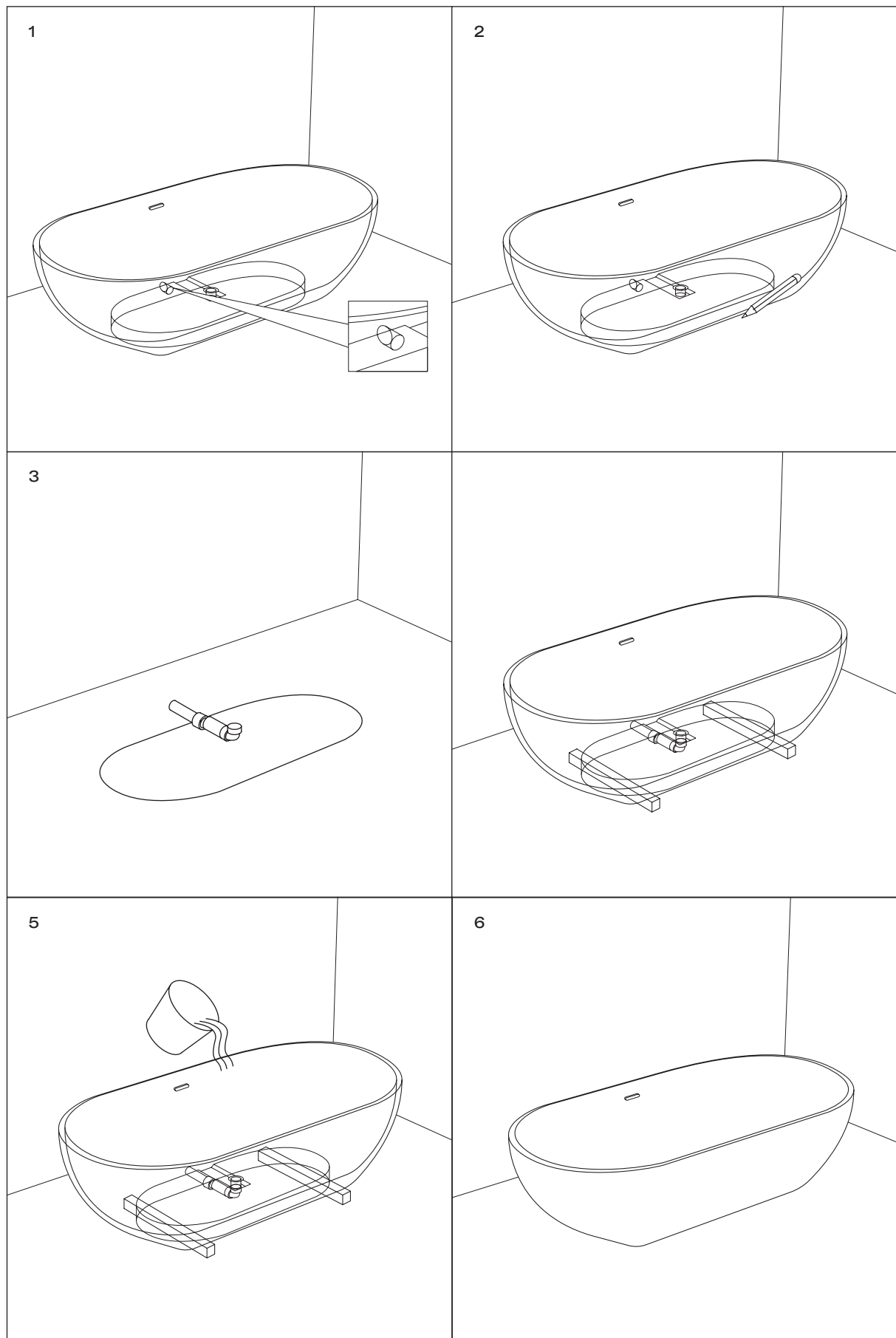
- 1 Mark the outline of the bath base on the floor, taking the position of the waste pipe into consideration.
- 2 Bring the waste pipe through the floor within the outlined area.
- 3 Complete the floor covering/tiling of the surrounding area (waterproofing is highly recommended) and ensure that the floor is level.
- 4 Position two lengths of timber at either end of where the bath will be installed and carefully lift the bath onto the timber. Ensure that the bath is propped up high enough to allow you to connect the waste fitting to the trap, and make sure that the area is clean and free from debris before proceeding.
- 5 Connect the waste pipe to the trap, taking care not to over-tighten the connector to the bath waste thread as this can damage the internal parts of the product. Once complete, check the bath for any leaks by filling it half way, then releasing the waste.
- 6 When you're satisfied that there are no leaks, carefully remove the lengths of timber and gently lower the bath into its final position to complete the installation.



INSTALLATION STEPS (CONCRETE FLOOR)

For concrete floors where a channel has or will be cut into the concrete floor to fit the waste pipe, please follow the wooden floor installation steps instead.

- 1** Using a 44mm hole saw drill attachment, drill a circular hole into the cavity wall at the base of the bath, towards the back of the design. Please note that this will not void your warranty.
- 2** Mark the outline of the bath base onto the floor.
- 3** Bring the waste pipe across the floor behind the bath, and through the drilled hole.
- 4** Position two lengths of timber at either end of where the bath will be installed and carefully lift the bath onto the timber. Ensure that the bath is propped up high enough to allow you to connect the waste fitting to the trap.
- 5** Connect the waste pipe to the trap, taking care not to over-tighten the connector to the bath waste thread as this can damage the internal parts of the product. Once complete, check the bath for any leaks by filling it half way, then releasing the waste.
- 6** When you're satisfied that there are no leaks, carefully remove the lengths of timber and gently lower the bath into its final position to complete the installation.



CARE INSTRUCTIONS

To clean and maintain the flawless finish of this product, please follow the below instructions. Improper maintenance will void your product guarantee.

✓ Clean the bath immediately after use using warm water and a neutral detergent.

✓ Dry with a soft cloth.

✗ Do not use acidic or abrasive cleansers.

✗ Do not clean with a concentrated bleach or concentrated cleaning product.

✗ Do not use scouring pads or other abrasive cleaning tools.

Go to Lusso.com to activate your guarantee.

LUSO

Customer Care: 020 3370 4057

International: +44 20 3370 4057