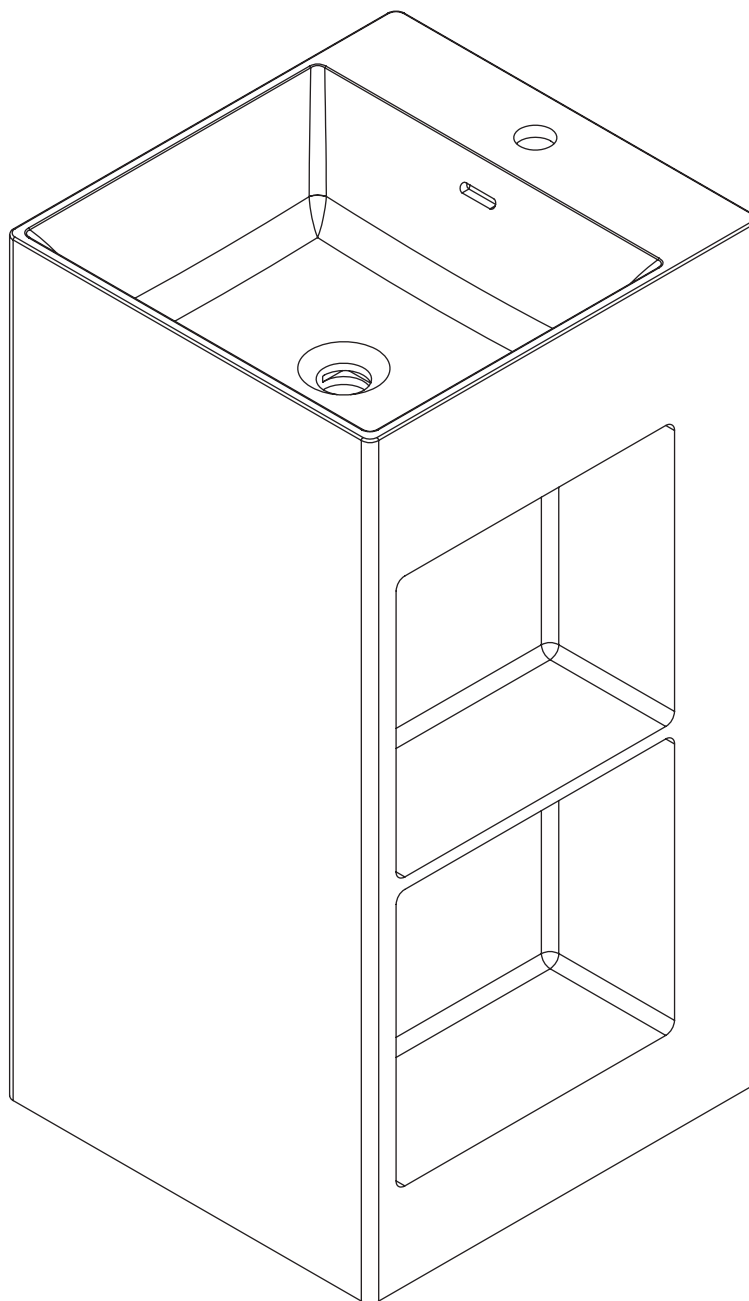


# CORTESE®

## STONE FREESTANDING BASIN



EN  
INSTALLATION  
AND CARE GUIDE

Please retain for future reference

# LUSO



# INTRODUCTION

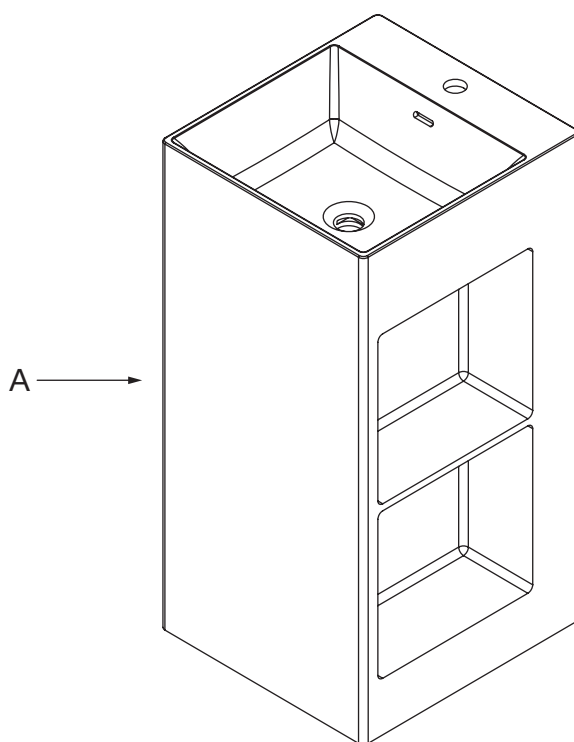
Thank you for purchasing this Cortese® Stone Freestanding Basin.

Please read this guide carefully before installing, using and cleaning this product, and retain it for future reference.

If you have any queries in relation to this product or guide, please contact our Customer Service team on 020 3370 4057.

## PRODUCT KIT

### A Stone Basin

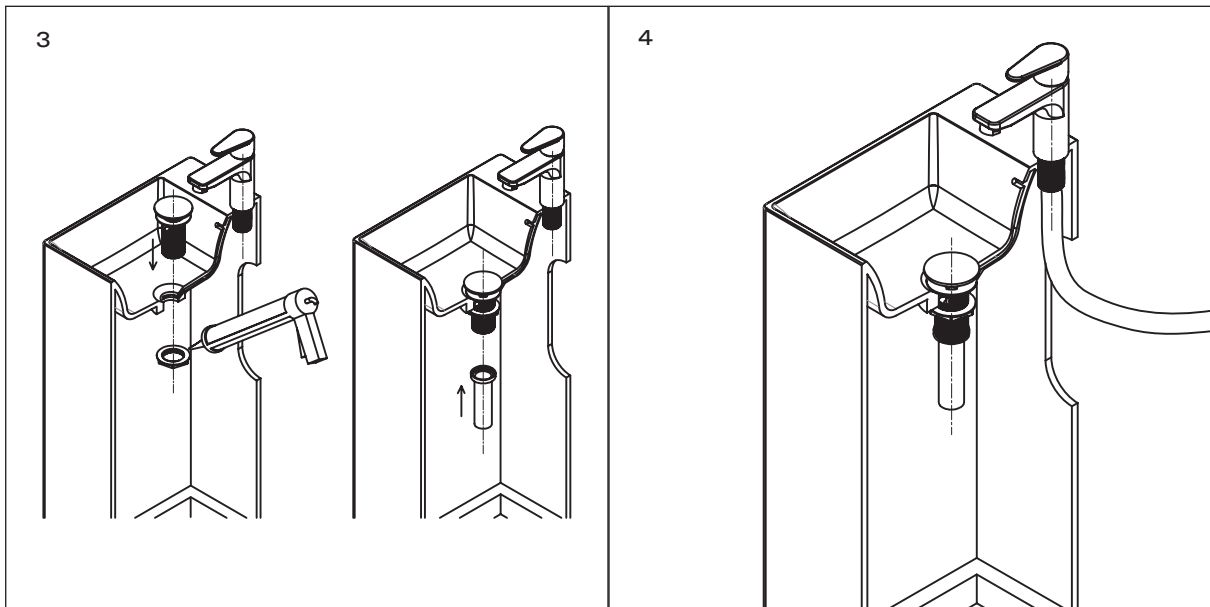
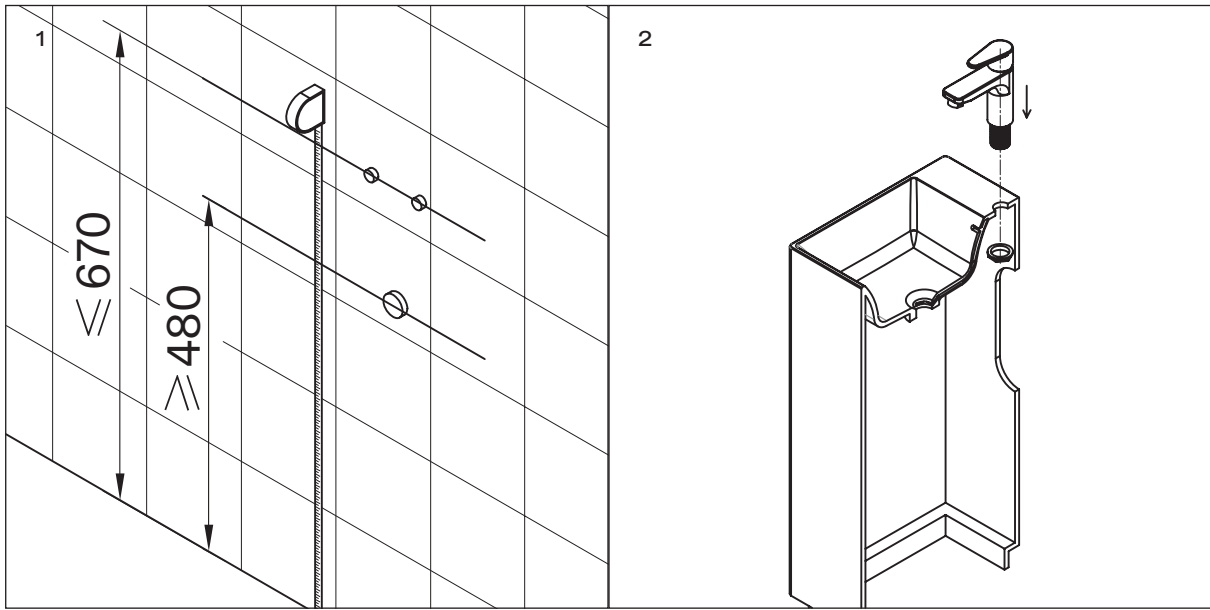


# INSTALLATION STEPS

**Please note that this basin is designed for freestanding installation only, and we recommend that it is installed by a fully qualified plumber.**

**Before installation, please observe all local plumbing and building codes, and inspect the waste and plumbing (replacing if necessary).**

- 1** Prepare the installation area using the diagram in figure 1 for guidance.
- 2** Install the tap into the basin following the manufacturer's instructions.
- 3** Install the basin waste following the manufacturer's instructions, and connect the bottle trap.
- 4** Connect the tap to the water supply.

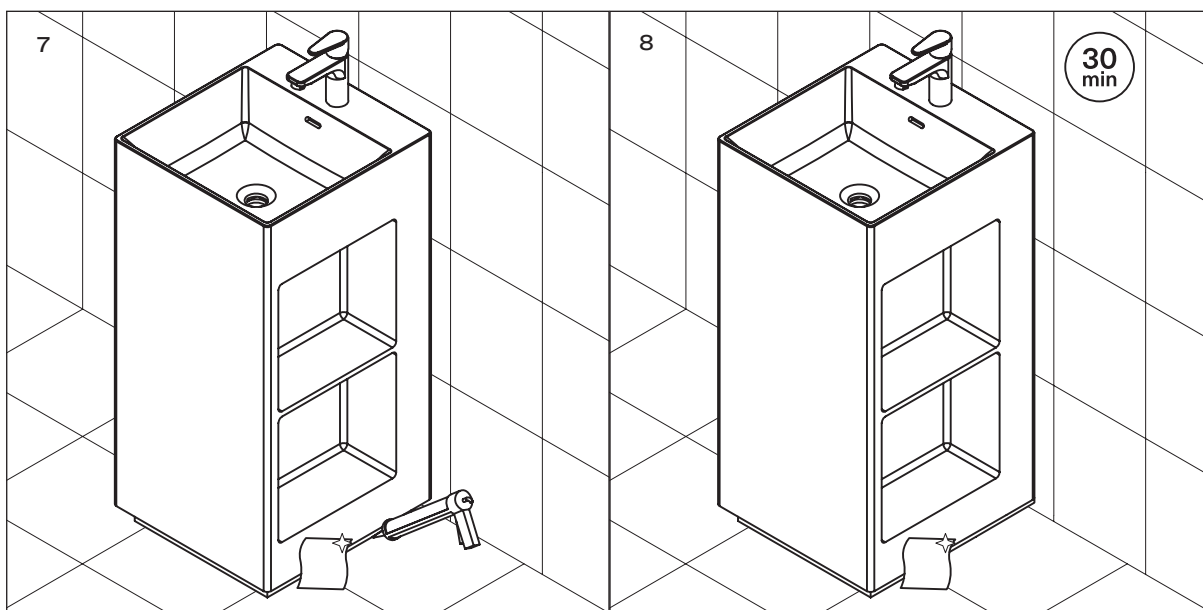
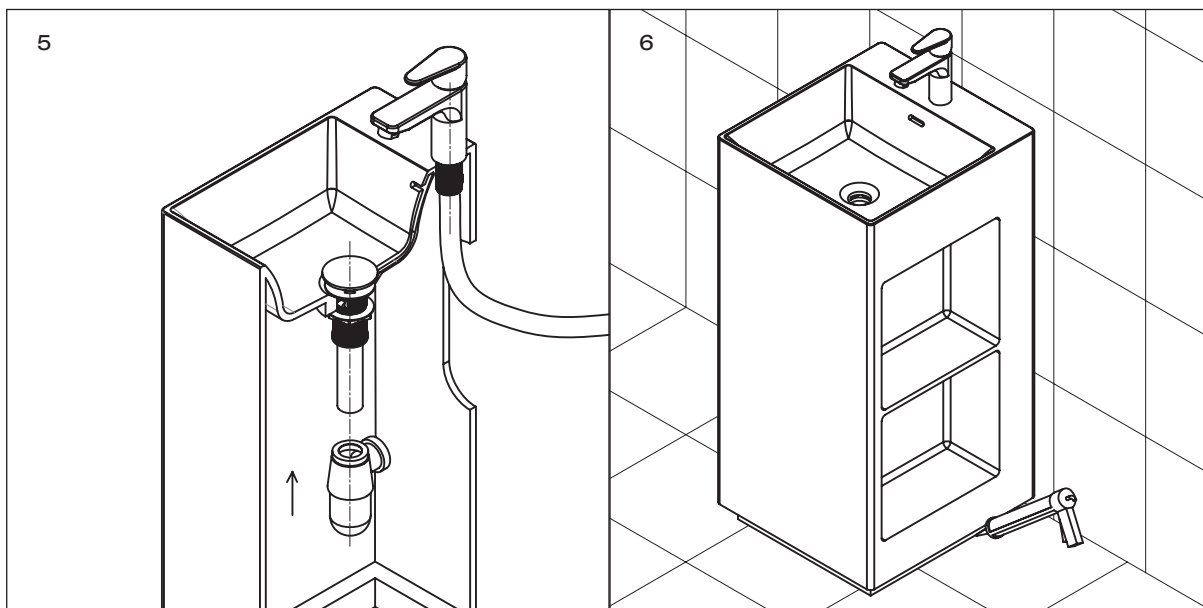


CONTINUED OVERLEAF

# INSTALLATION STEPS

(CONTINUED)

- 5 Connect the bottle trap to the wall outlet.
- 6 Apply sealant around the bottom of the basin - please note that you must not use epoxy resin as a sealant as this will void the product warranty.
- 7 Immediately wipe away any excess sealant, and fill any voids as needed, checking that the basin does not move out of position.
- 8 After allowing the sealant to cure for at least 30 minutes, open the tap valves to check for leakages, and clean the basin and surrounding area with a non-abrasive, non-acidic cleanser to complete the installation.



# CARE INSTRUCTIONS

To clean and maintain the flawless finish of this product, please follow the below instructions. Improper maintenance will void your product guarantee.

- ✓ Clean the basin immediately after use using warm water and a neutral detergent.
- ✓ Dry with a soft cloth.
- ✓ Remove scratches and stains with a polishing kit for polished stone basins, or a wet and dry sandpaper pad for matte stone basins.

- ✗ Do not use acidic or abrasive cleansers.
- ✗ Do not clean with a concentrated bleach or shampoo.
- ✗ Do not use scouring pads or other abrasive cleaning tools.

Go to [Lusso.com](https://Lusso.com) to activate your guarantee.

# LUSO

Customer Care: 020 3370 4057

International: +44 20 3370 4057