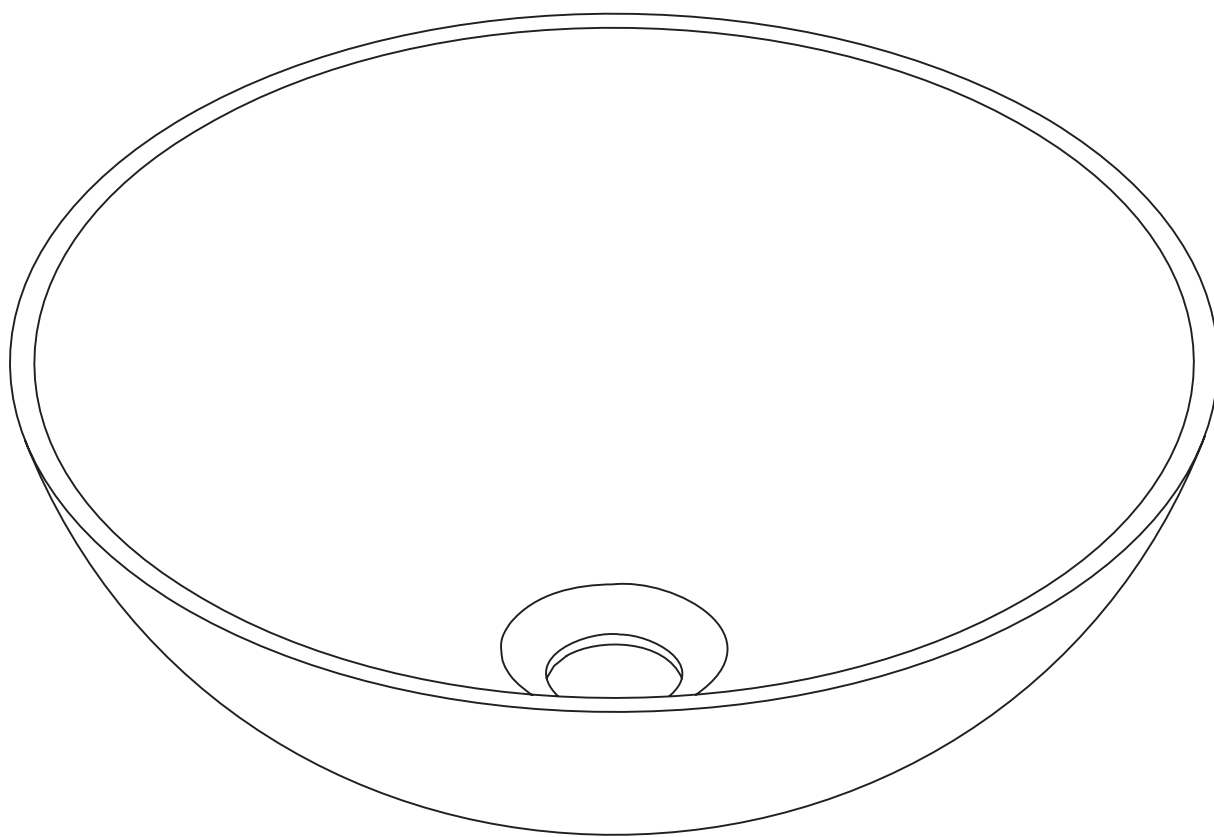


CORTESE®

STONE COUNTERTOP BASIN



EN
INSTALLATION
AND CARE GUIDE

Please retain for future reference

LUSO

INTRODUCTION

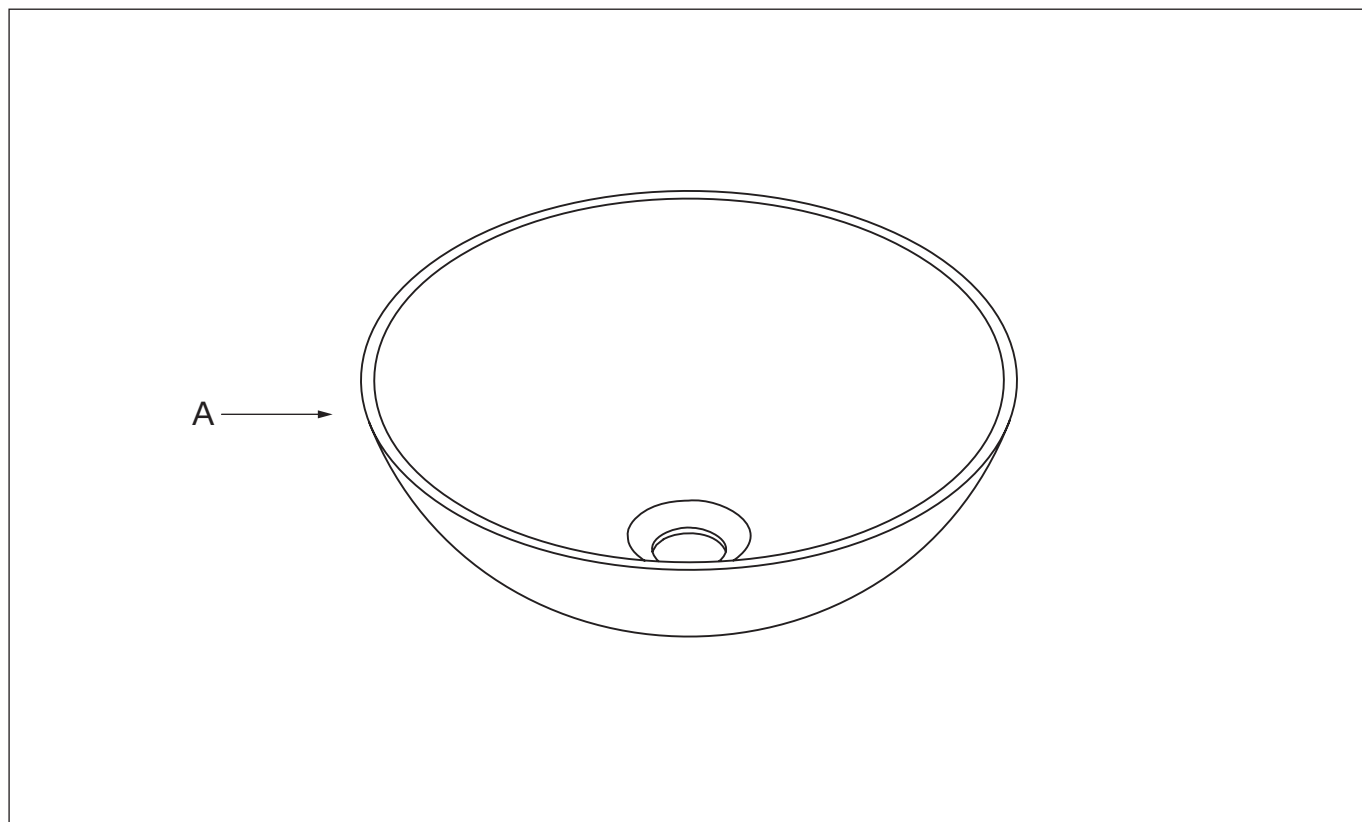
Thank you for purchasing this Cortese® Stone Countertop Basin.

Please read this guide carefully before installing, using and cleaning this product, and retain it for future reference.

If you have any queries in relation to this product or guide, please contact our Customer Service team on 020 3370 4057.

PRODUCT KIT

A Stone Basin



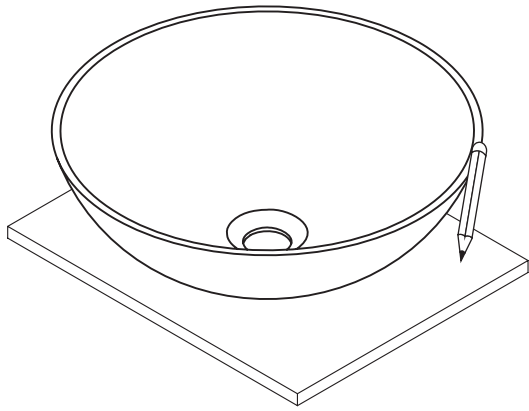
INSTALLATION STEPS

Please note that this basin is designed for countertop installation only, and we recommend that it is installed by a fully qualified plumber.

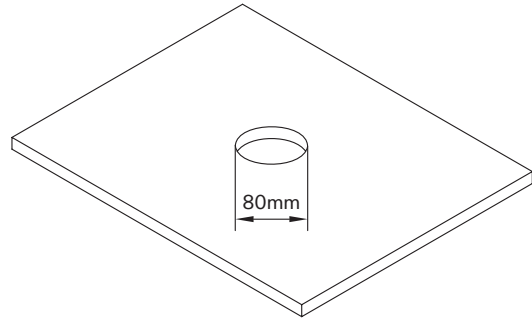
Before installation, please observe all local plumbing and building regulations, and inspect the waste and plumbing (replacing if necessary).

- 1** Trace the template of the basin with a pencil to map its outer rim onto the countertop surface - make sure to take the tap dimension into account.
- 2** Drill a 45mm hole into the countertop.
- 3** Install the basin waste onto the basin following the manufacturer's instructions.
- 4** Position the basin onto the countertop, threading the waste through the drilled hole.

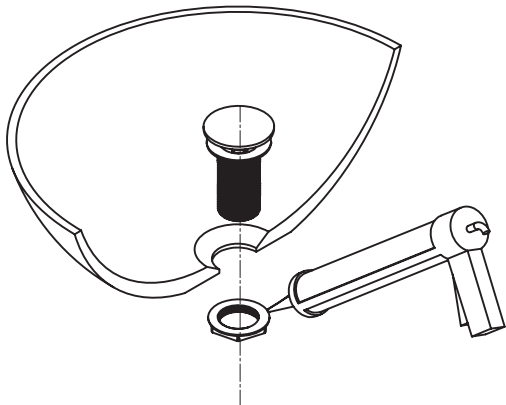
1



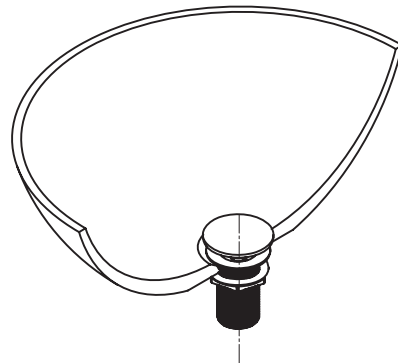
2



3



4

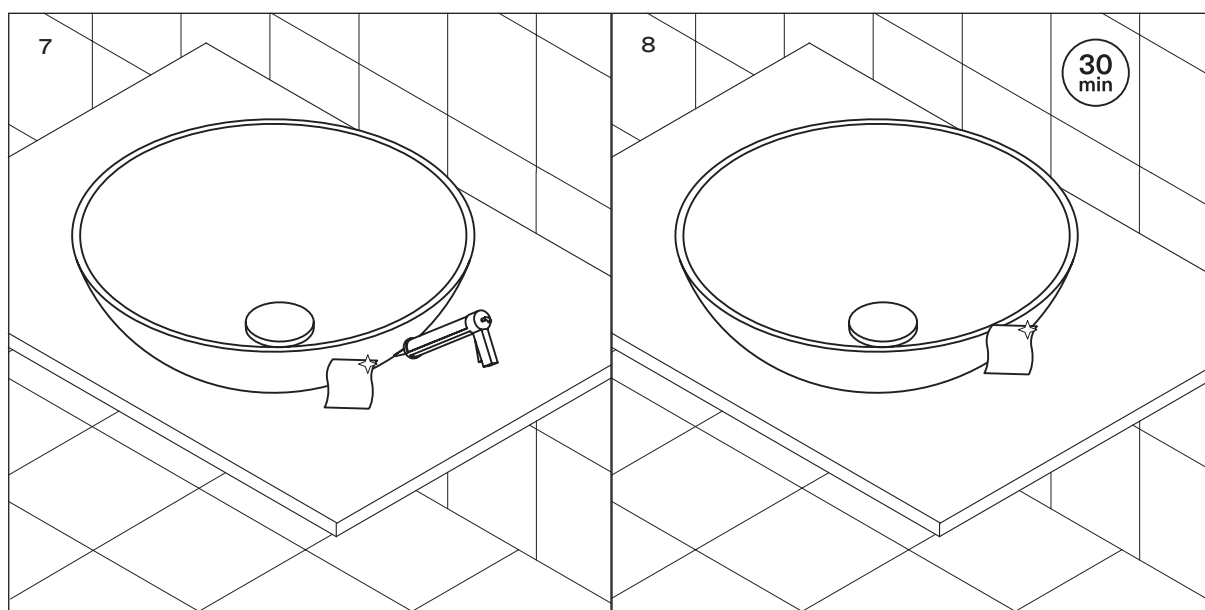
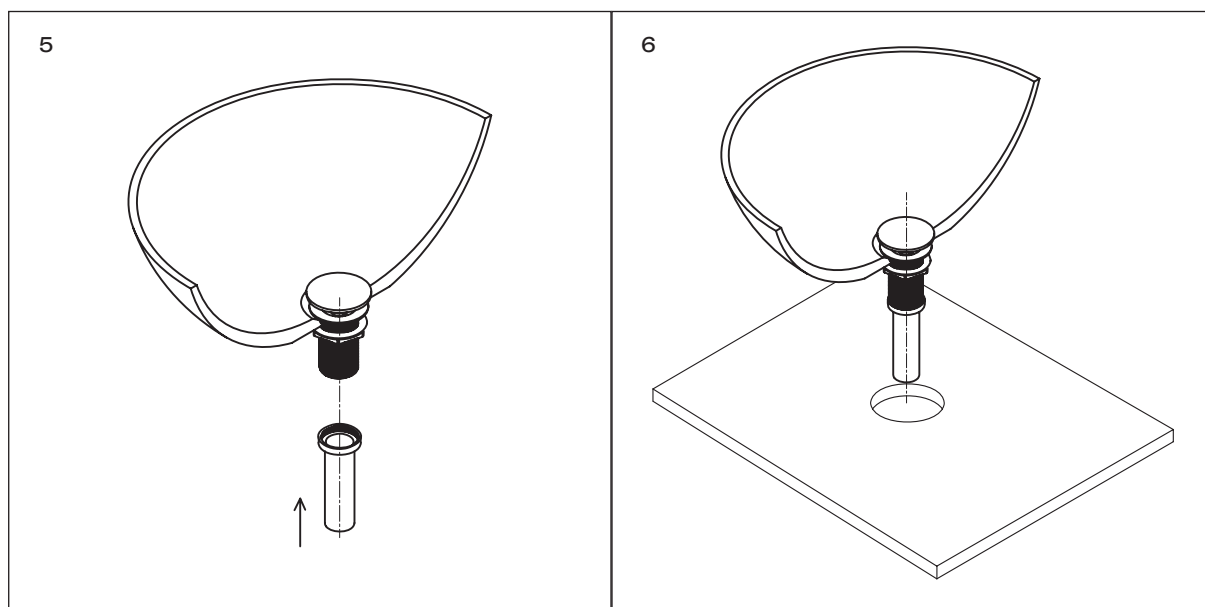


CONTINUED OVERLEAF

INSTALLATION STEPS

(CONTINUED)

- 5 Connect the waste to the plumbing.
- 6 Apply sealant around the bottom of the basin - please note that you must not use epoxy resin as a sealant as this will void the product warranty.
- 7 Immediately wipe away any excess sealant, and fill any voids as needed, checking that the basin does not move out of position.
- 8 After allowing the sealant to cure for at least 30 minutes, water test the basin to check for leakages, and clean the basin and surrounding area with a non-abrasive, non-acidic cleanser to complete the installation.



CARE INSTRUCTIONS

To clean and maintain the flawless finish of this product, please follow the below instructions. Improper maintenance will void your product guarantee.

- ✓ Clean the basin immediately after use using warm water and a neutral detergent.
- ✓ Dry with a soft cloth.
- ✓ Remove scratches and stains with a polishing kit for polished stone basins, or a wet and dry sandpaper pad for matte stone basins.

- ✗ Do not use acidic or abrasive cleansers.
- ✗ Do not clean with a concentrated cleaning product.
- ✗ Do not use scouring pads or other abrasive cleaning tools.

Go to Lusso.com to activate your guarantee.

LUSO

Customer Care: 020 3370 4057

International: +44 20 3370 4057