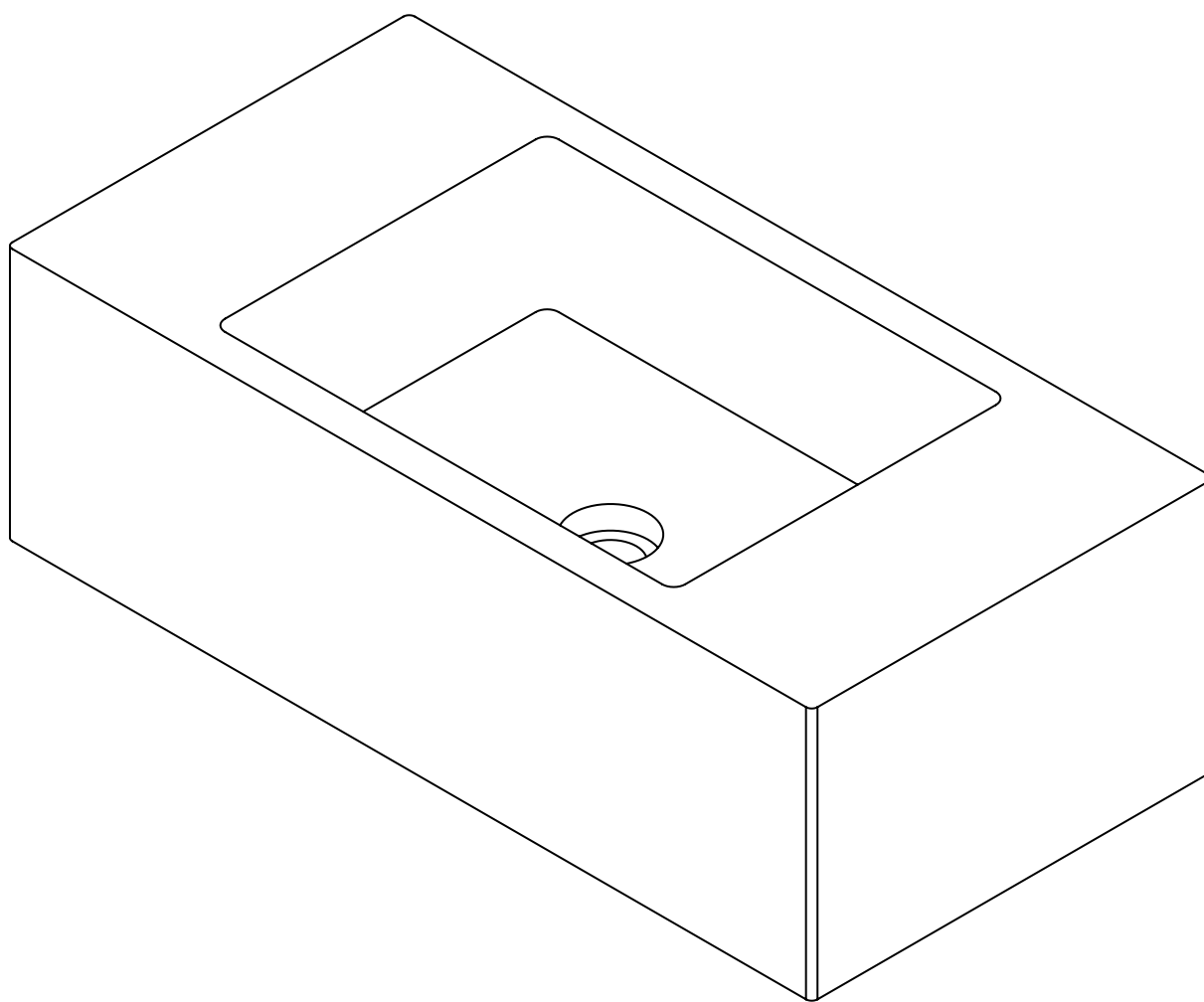


# CALLA

CAL70

MARBLE WALL HUNG BASIN



EN  
INSTALLATION  
AND CARE GUIDE

Please retain for future reference

# LUSO



# INTRODUCTION

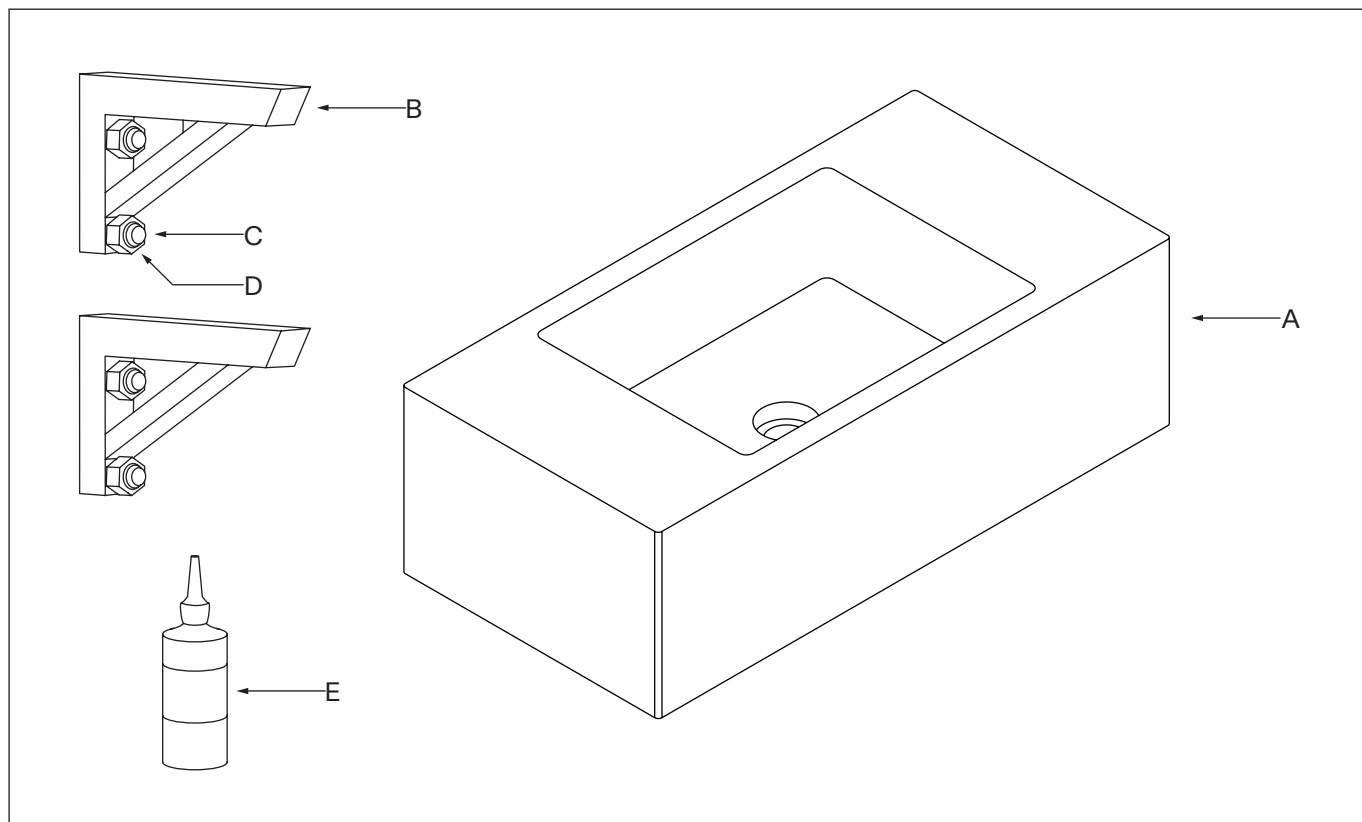
Thank you for purchasing this Marble Wall Hung Basin.

Please read this guide carefully before installing, using and cleaning this product, and retain it for future reference.

If you have any queries in relation to this product or guide, please contact our Customer Service team on 020 3370 4057.

## PRODUCT KIT

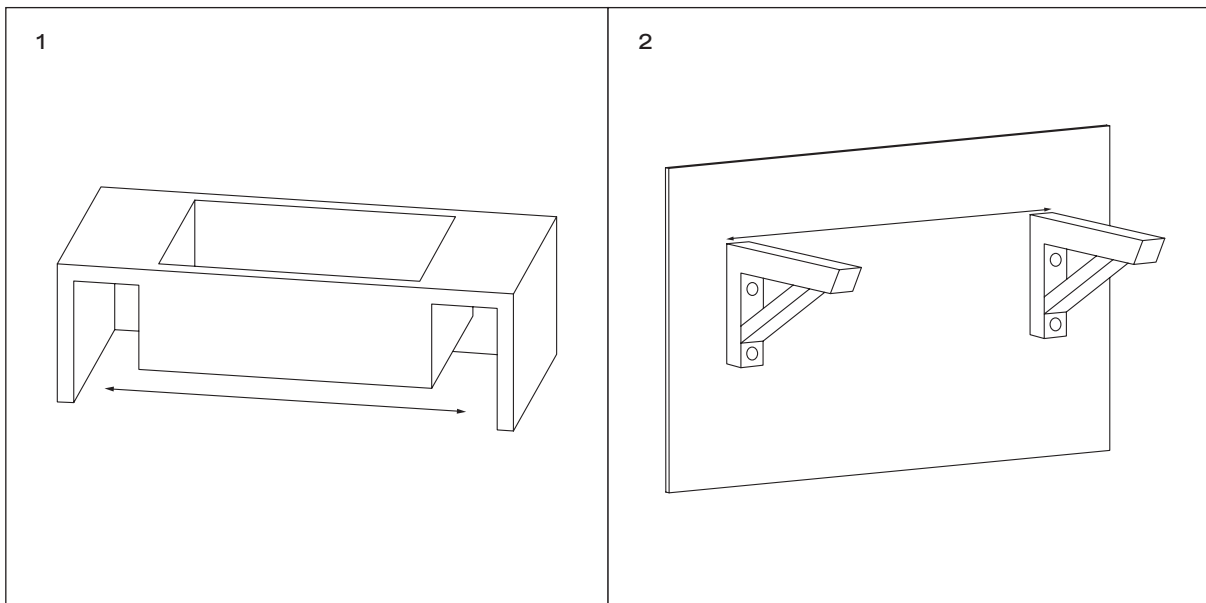
- A** Basin
- B** Wall Brackets (x2)
- C** Expansion Screws (x4)
- D** Nuts (x4)
- E** Glue

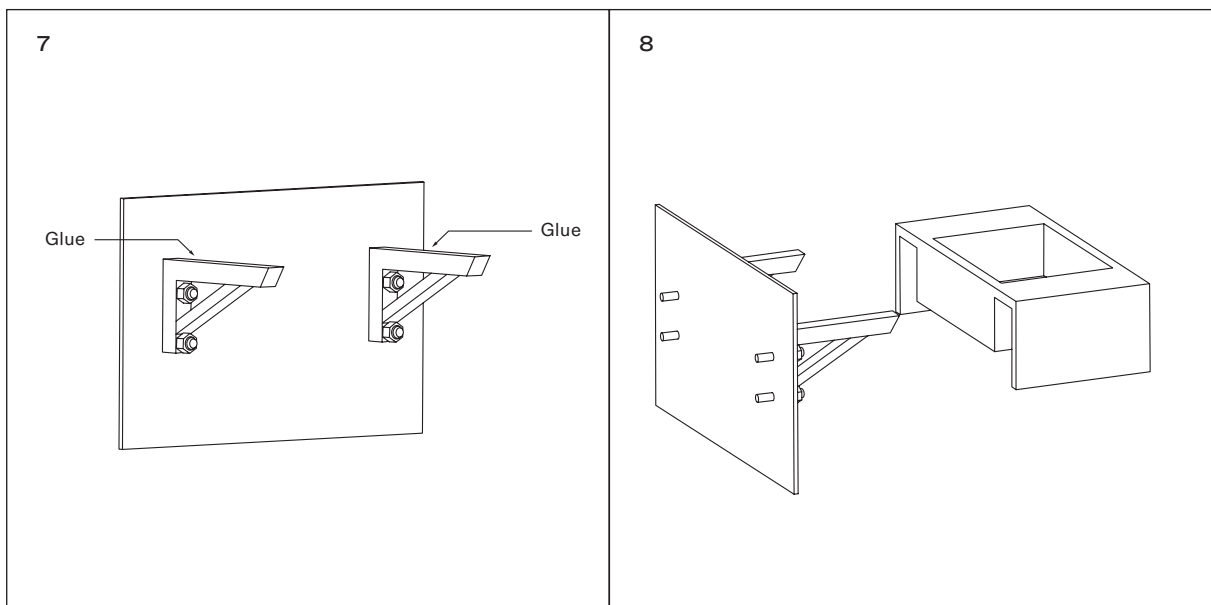
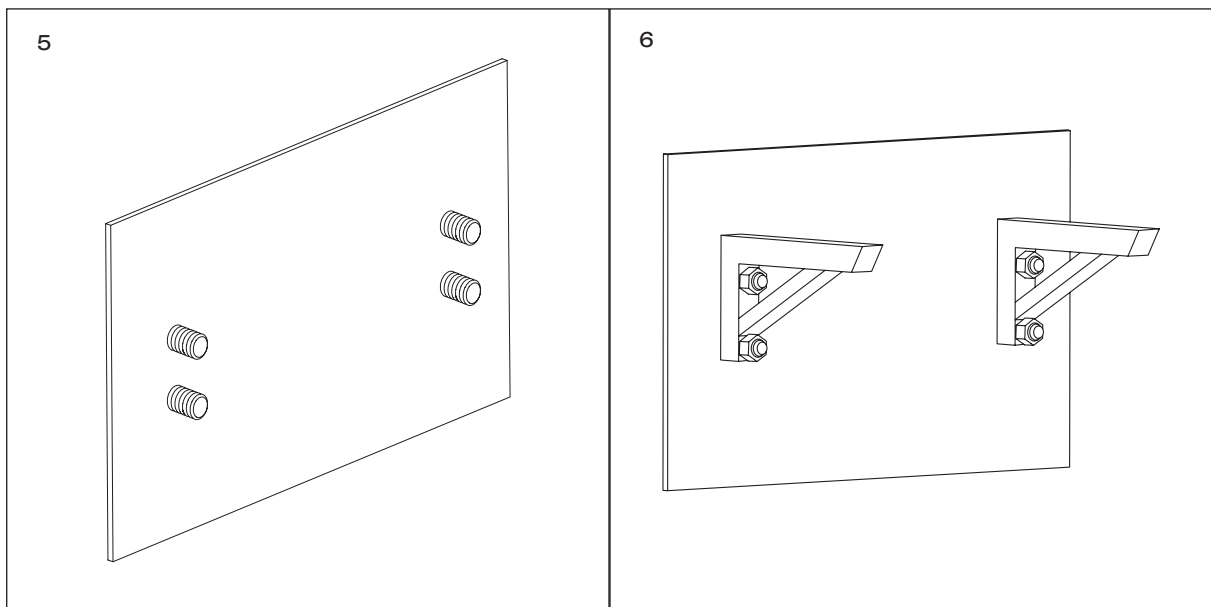
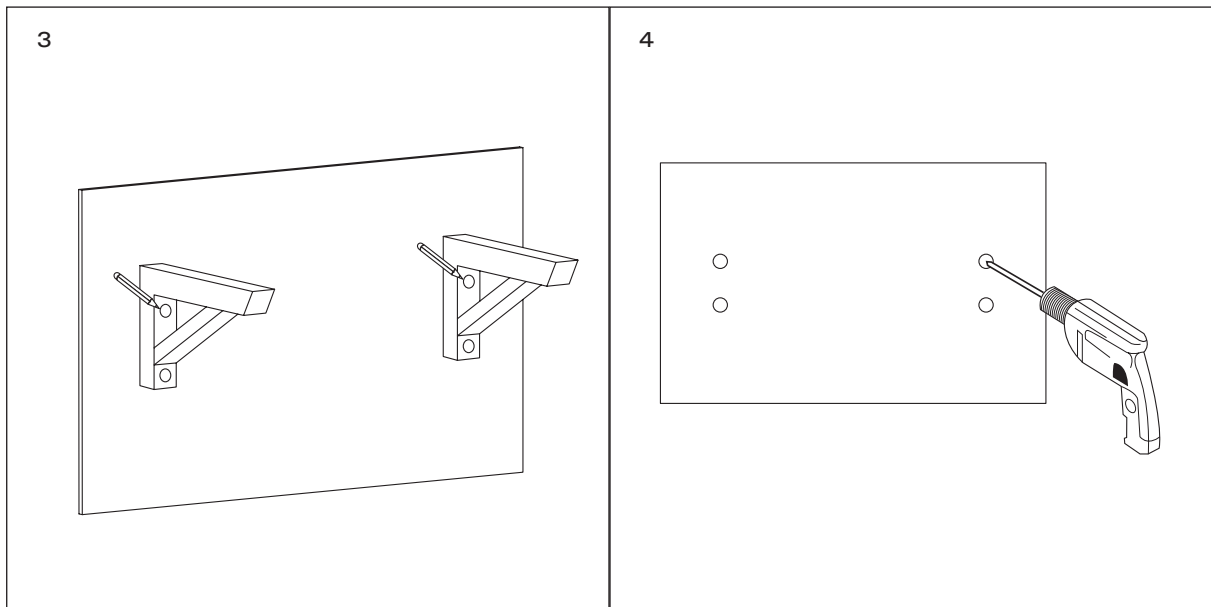


# INSTALLATION STEPS

**Before installation, please note that this basin is designed for wall mounting only, and we recommend that it is installed by a fully qualified plumber.**

- 1** Measure the length between the two midpoints of the basin.
- 2** Using a ruler and pencil, draw a horizontal line onto the wall that's the same length as the distance between the two midpoints. The provided wall brackets should be positioned directly below this line, with the bracket holes lined up with each end.
- 3** Carefully mark the position of the bracket holes onto the wall.
- 4** Using an electric drill, drill the four bracket holes into the wall.
- 5** Gently tap the expansion screws into the drilled holes.
- 6** Position the brackets onto the expansion screws, and fix into place using the provided nuts.
- 7** Carefully apply glue to the top of each bracket.
- 8** Mount the basin onto the brackets.





# CARE INSTRUCTIONS

To clean and maintain the flawless finish of this product, please follow the below instructions. Improper maintenance will void your product guarantee.

- ✓ Clean the basin using either a diluted detergent or neutral soap solution, or products specifically designed for use on marble.
- ✓ Ensure that your basin is professionally sealed once per year.
- ✗ Do not use acidic cleansers.
- ✗ Do not use abrasive cleansers or cloths.
- ✗ Do not use highly pigmented cloths.
- ✗ Do not leave items directly on the basin surface - use coasters or trivets to avoid leaving ring marks and stains.

Go to [Lusso.com](https://Lusso.com) to activate your guarantee.



# LUSO

Customer Care: 020 3370 4057

International: +44 20 3370 4057