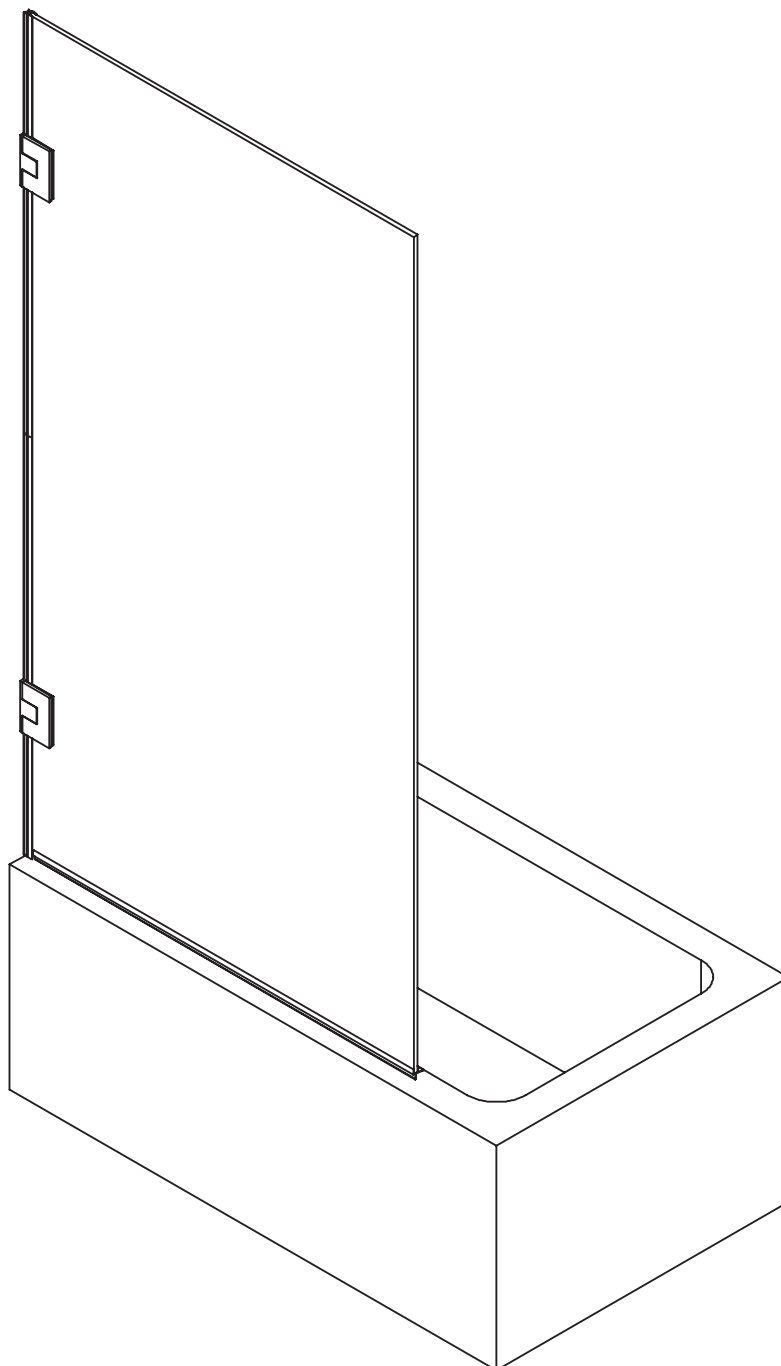


# CABINA

YP370

## FRAMELESS HINGED BATH SHOWER SCREEN



### EN INSTALLATION AND CARE GUIDE

Please retain for future reference

# LUSO



# INTRODUCTION

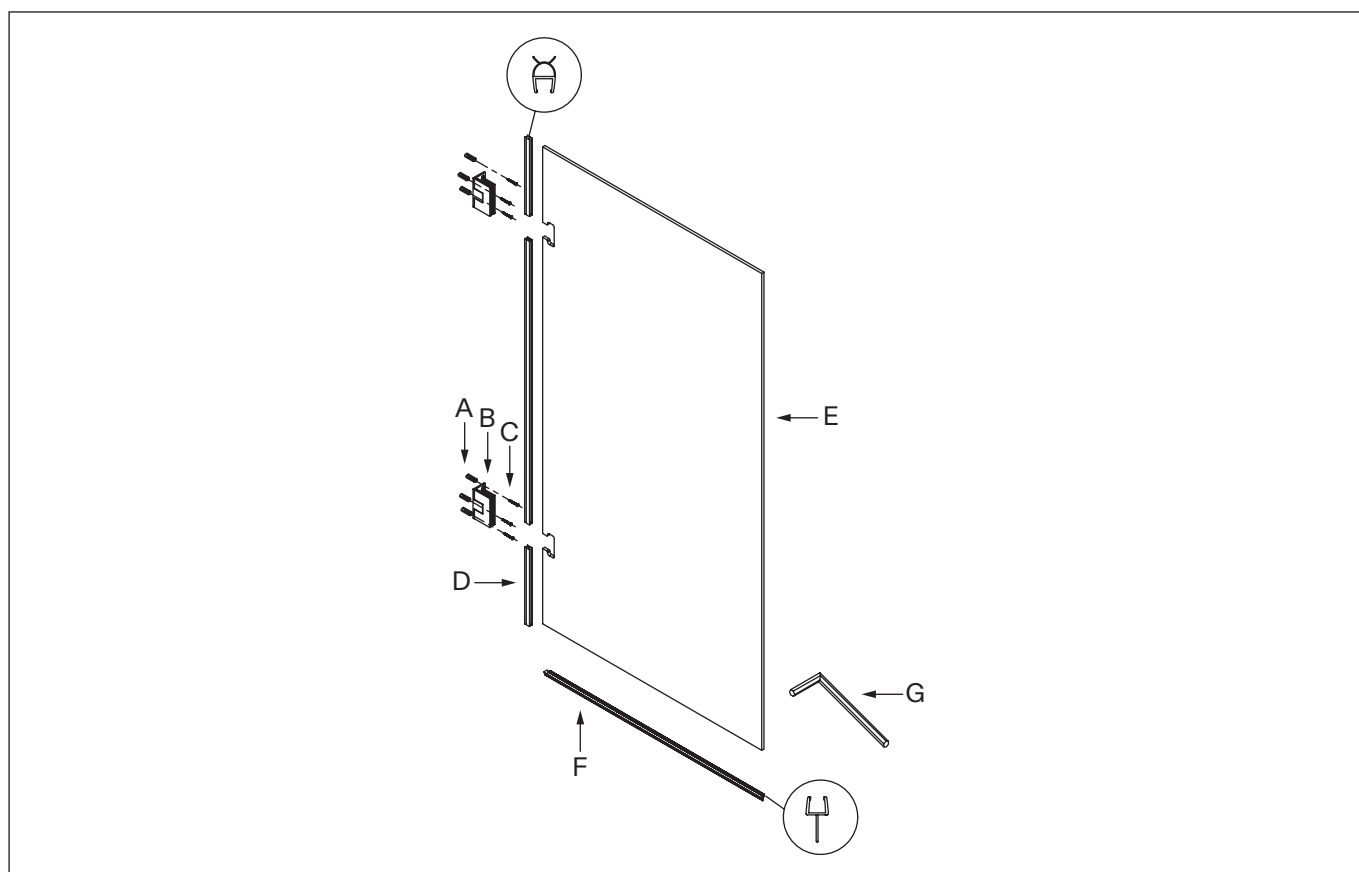
Thank you for purchasing the Cabina Frameless Hinged Bath Shower Screen.

Please read this guide carefully before installing, using and cleaning this product, and retain it for future reference.

If you have any queries in relation to this product or guide, please contact our Customer Service team on 020 3370 4057.

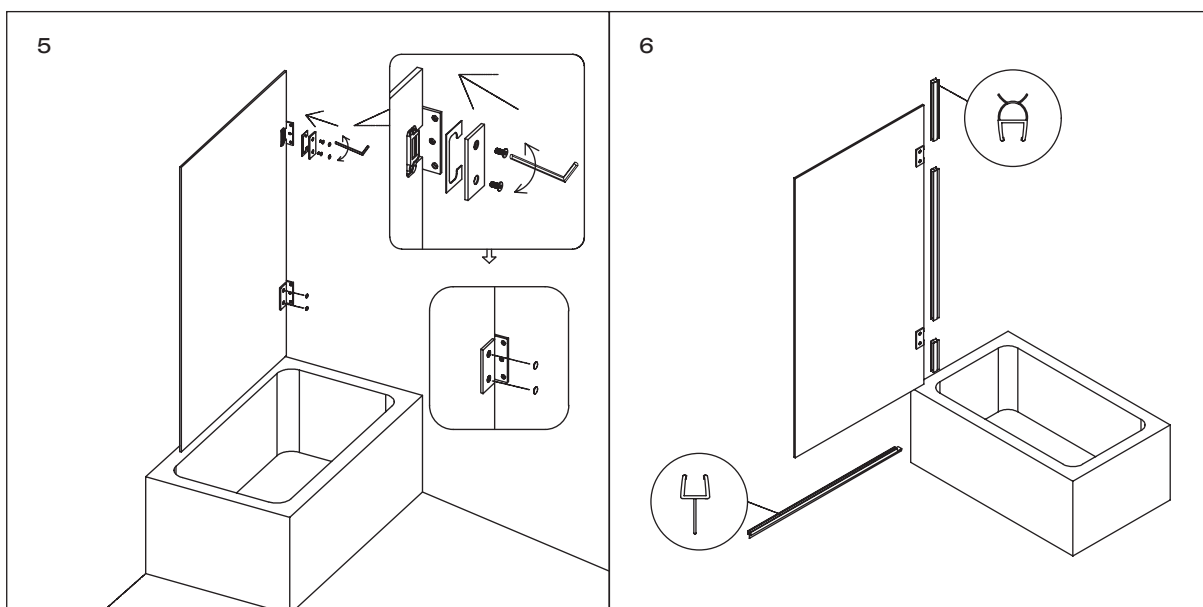
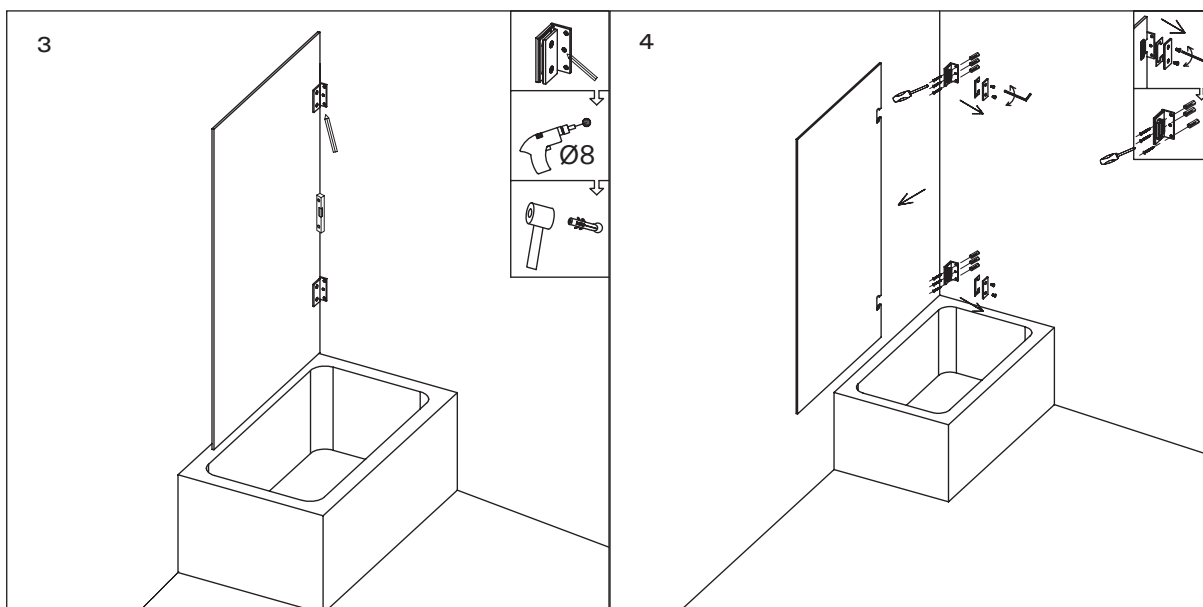
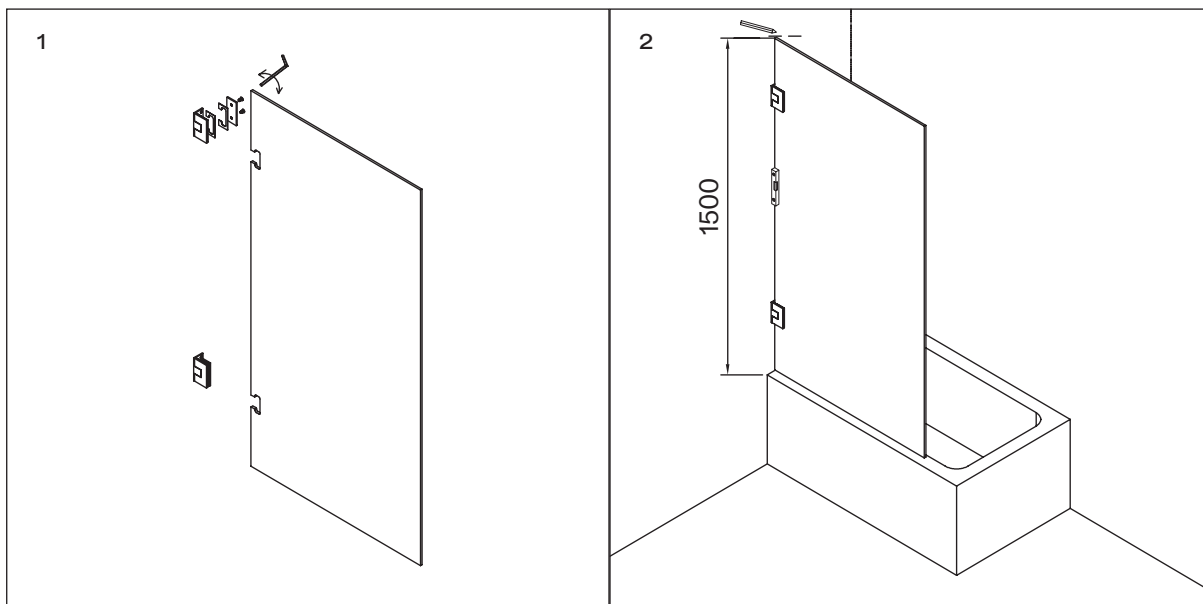
## PRODUCT KIT

- A** Wall Plug (x6)
- B** Hinges (x2)
- C** Screws (x6)
- D** Door Vertical Seal (x3)
- E** Glass Door
- F** Door Bottom Seal
- G** Allen Key

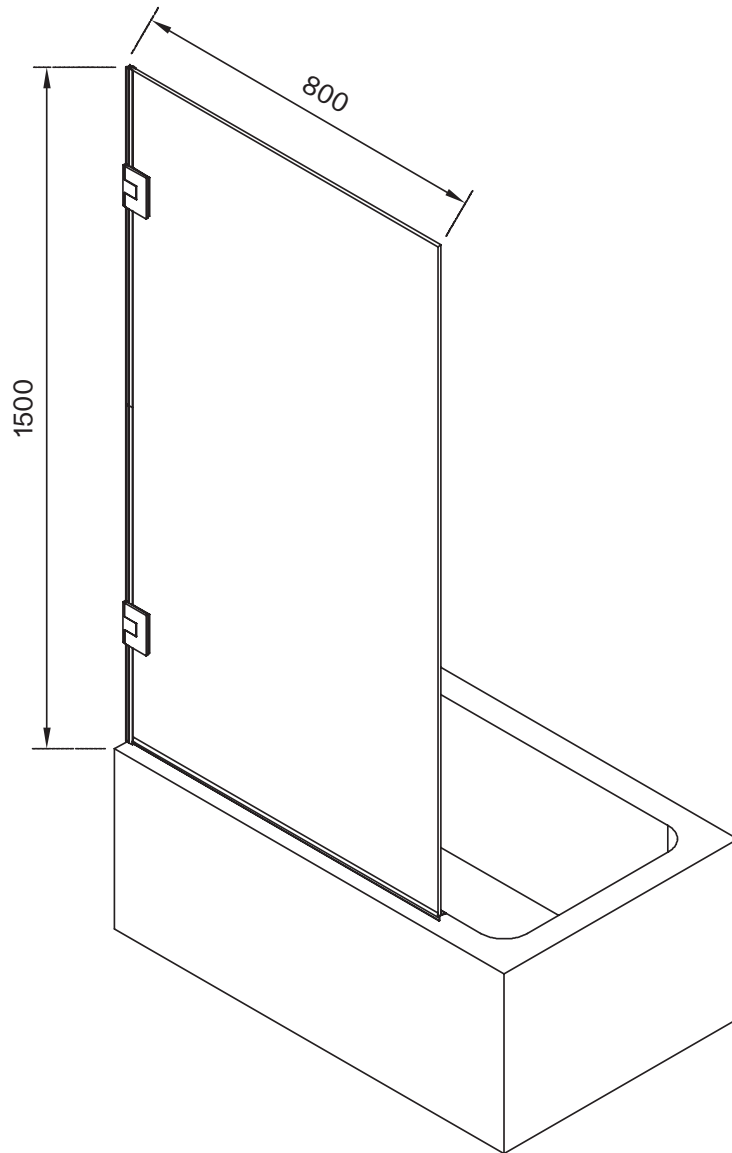


# INSTALLATION STEPS

- 1** Install the two hinges onto the glass door and tighten into place using the provided allen key.
- 2** Hold the glass door in place on the bathtub, using a spirit level to ensure that it is vertically aligned, then use a pencil to mark its position on the wall. Please refer to figure 2 for guidance.
- 3** Mark the position of the hinge holes onto the wall, put the glass door to one side, then drill the holes using an 8mm drill bit. Next, use a rubber mallet to gently tap the wall plugs into the drilled holes until they're flush with the wall.
- 4** Using the allen key, remove the two hinges from the glass door, position them over the installed wall plugs, and fix them into place using the provided screws.
- 5** Install the glass door onto the hinges, and fix them into position using the provided screws and allen key as shown in figure 5. Ensure that the gaskets are fixed on, then fit the decorative caps onto the screws.
- 6** Finally, fit the door vertical seal and door bottom seal to the glass door.



DIMENSIONS OVERLEAF



# CARE INSTRUCTIONS

To clean and maintain the flawless finish of this product, please follow the below instructions. Improper maintenance will void your product guarantee.

- ✓ Rinse the surface with clean water or glass cleaner.
- ✓ Dry with a soft cloth.
- ✓ Remove surface marks with a neutral cleanser without coarse grained powder.

- ✗ Do not use acidic cleansers.
- ✗ Do not use abrasive cleansers or cloths.

Go to [Lusso.com](https://Lusso.com) to activate your guarantee.

# LUSO

Customer Care: 020 3370 4057

International: +44 20 3370 4057