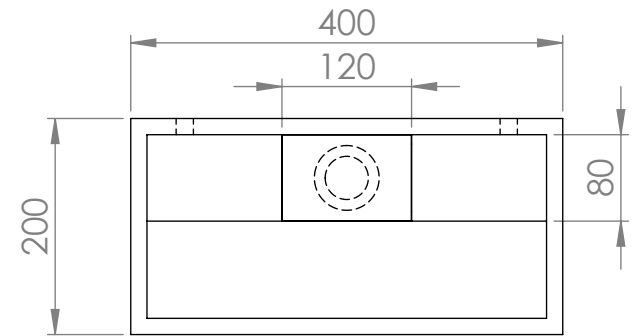
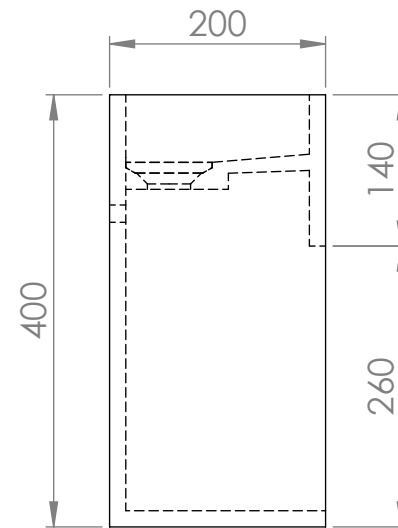


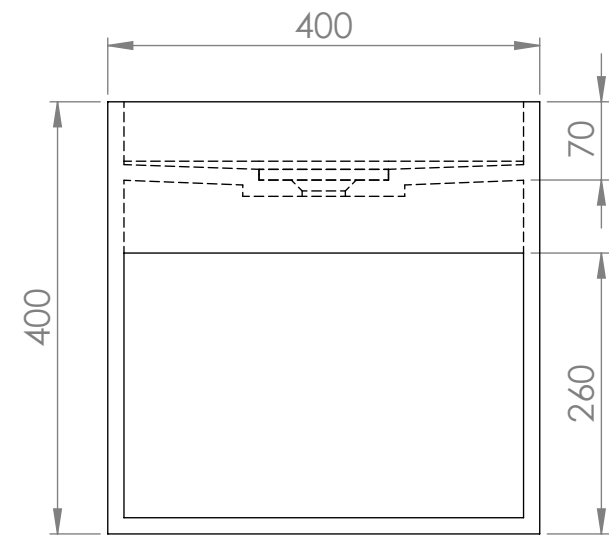
Top View



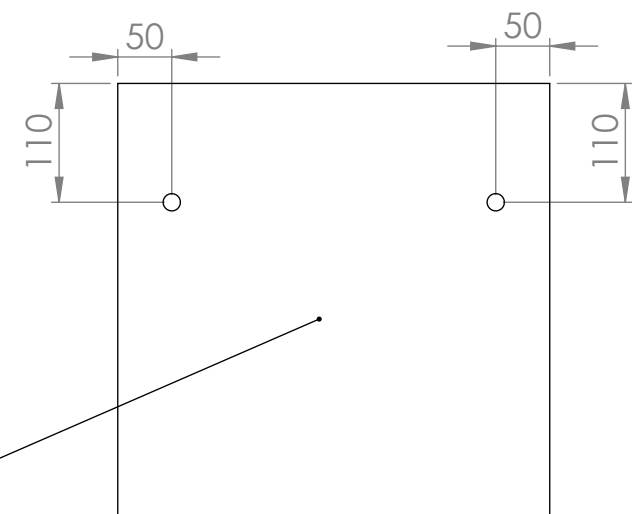
Side View - Section View



Front View - Section View



Back View



Back panel can be drilled  
to bring pipe work through

# LUSO

Product Name	Blok
Weight, kg	12
Material	Stone Resin
Product Size (mm)	400 x 400 x 200

All dimensions provided in millimeters.  
All basins are supplied with no tap hole(s). If you require a tap hole,  
you will need to use a standard 38mm hole-saw drill attachment.