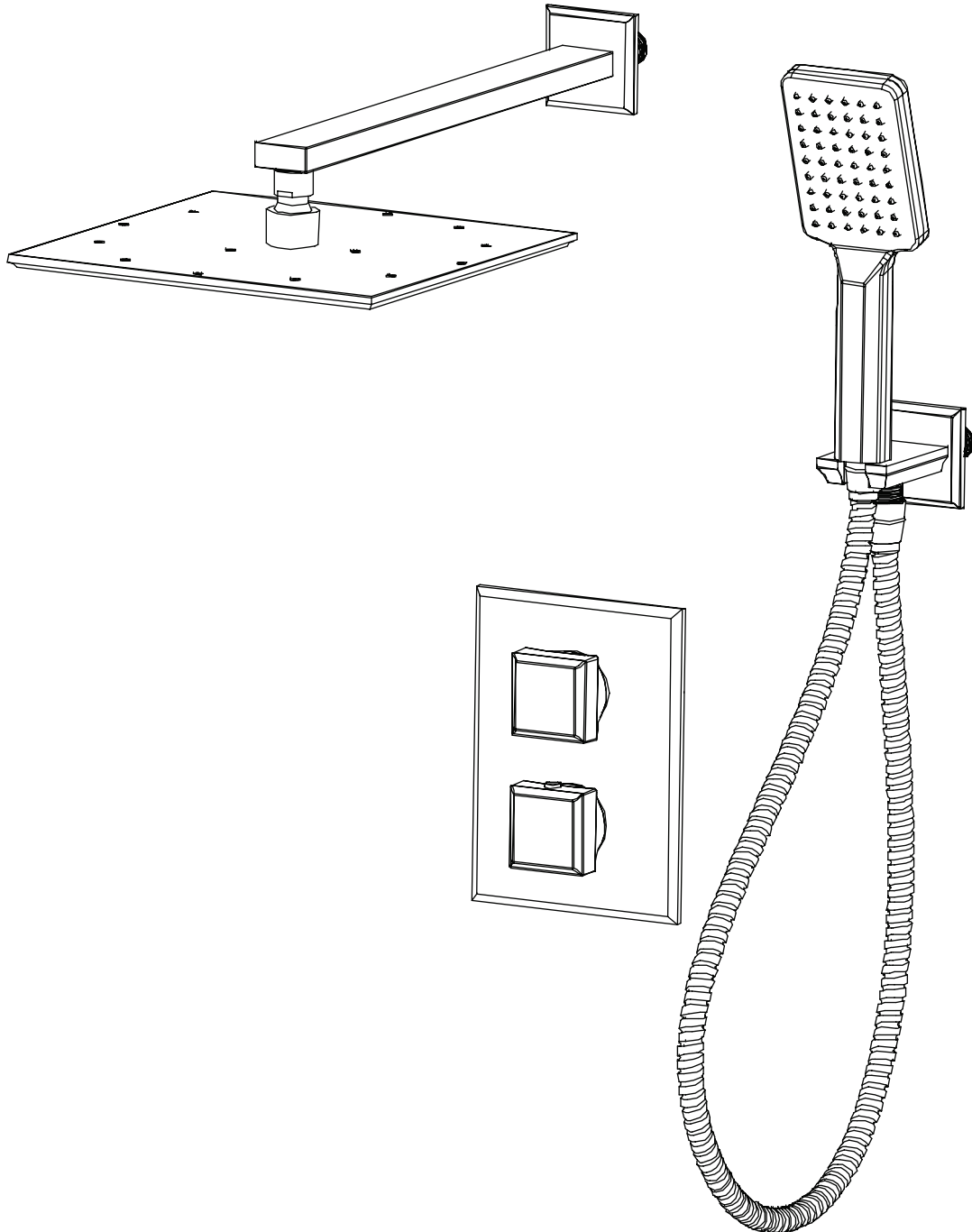


BAROQUE

BR06

THERMOSTATIC SHOWER
WITH HANDHELD SHOWER



EN
INSTALLATION
AND CARE GUIDE

Please retain for future reference

LUSO

INTRODUCTION

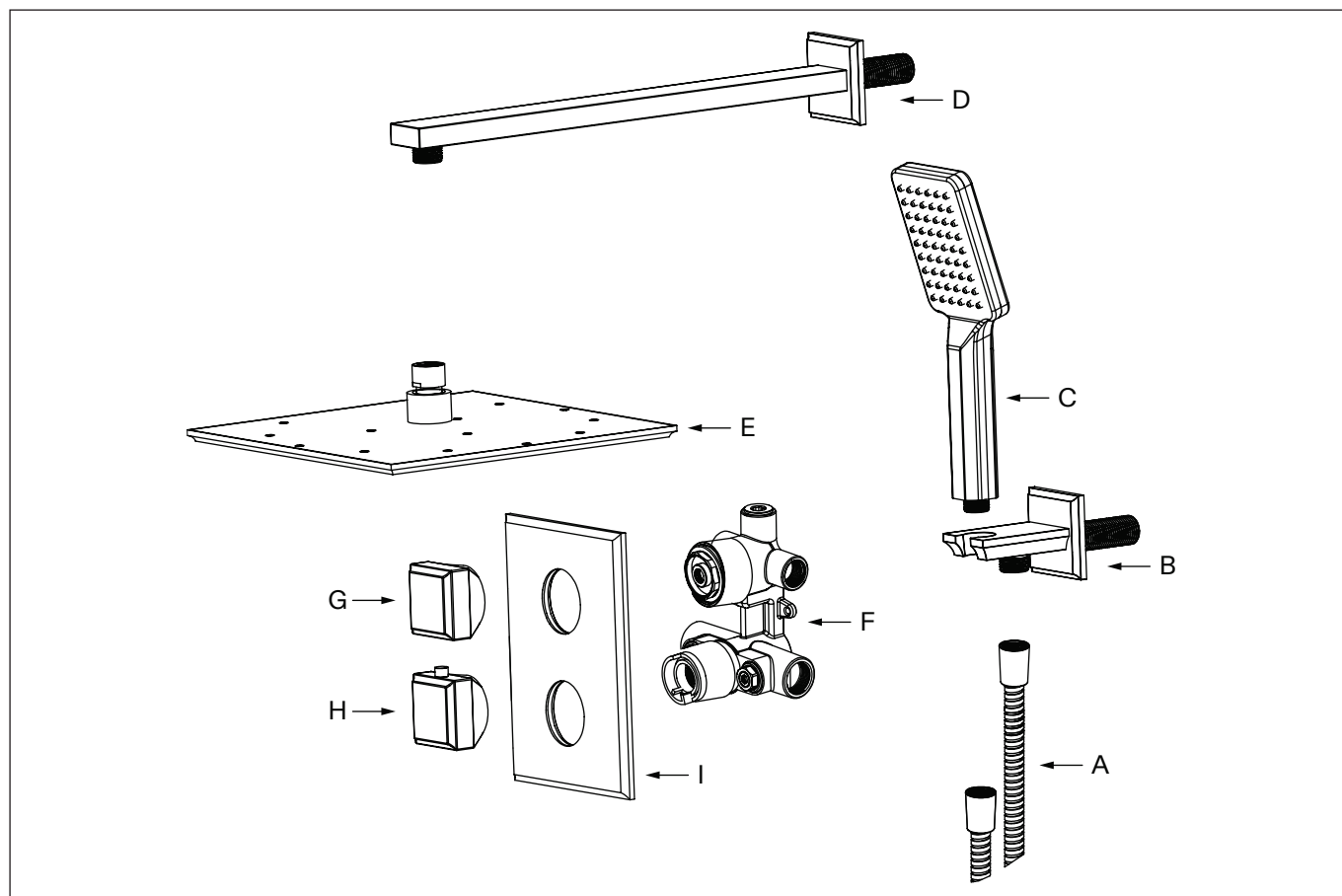
Thank you for purchasing the Baroque Thermostatic Shower with Handheld Shower.

Please read this guide carefully before installing, using and cleaning this product, and retain it for future reference. Please also note that this shower has been fully tested before being dispatched, which may mean there is water residue on some of the parts.

If you have any queries in relation to this product or guide, please contact our Customer Service team on 020 3370 4057.

PRODUCT KIT

- | | | | |
|----------|-----------------|----------|-------------------|
| A | Handset Hose | F | Valve |
| B | Handset Bracket | G | Diverter Lever |
| C | Handset | H | Temperature Lever |
| D | Shower Arm | I | Backplate |
| E | Shower Head | | |



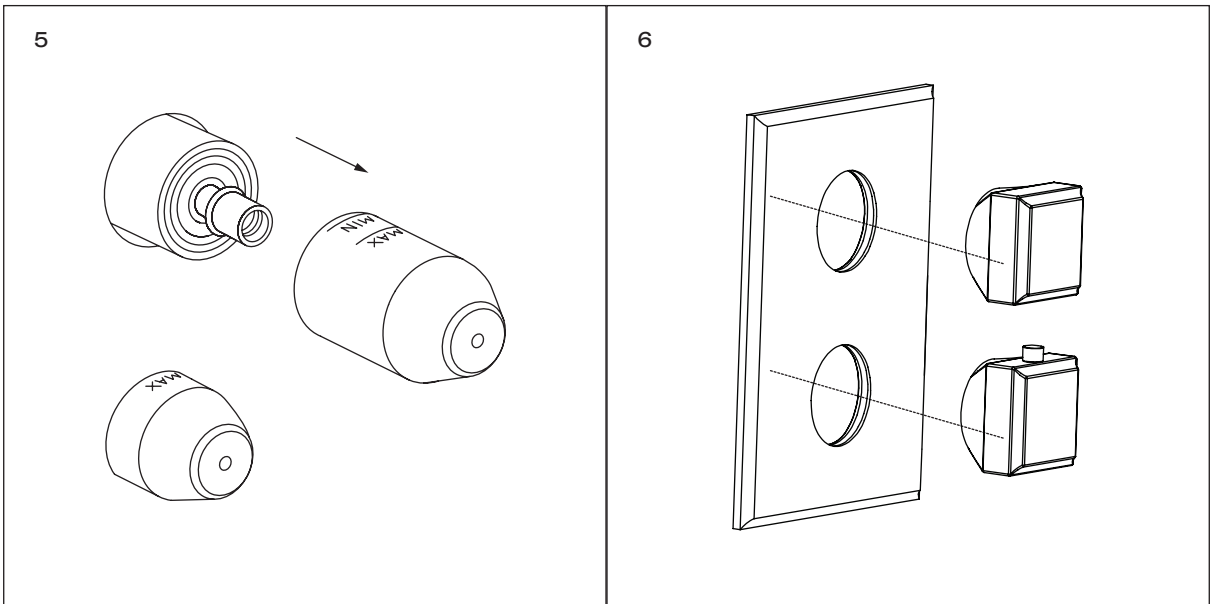
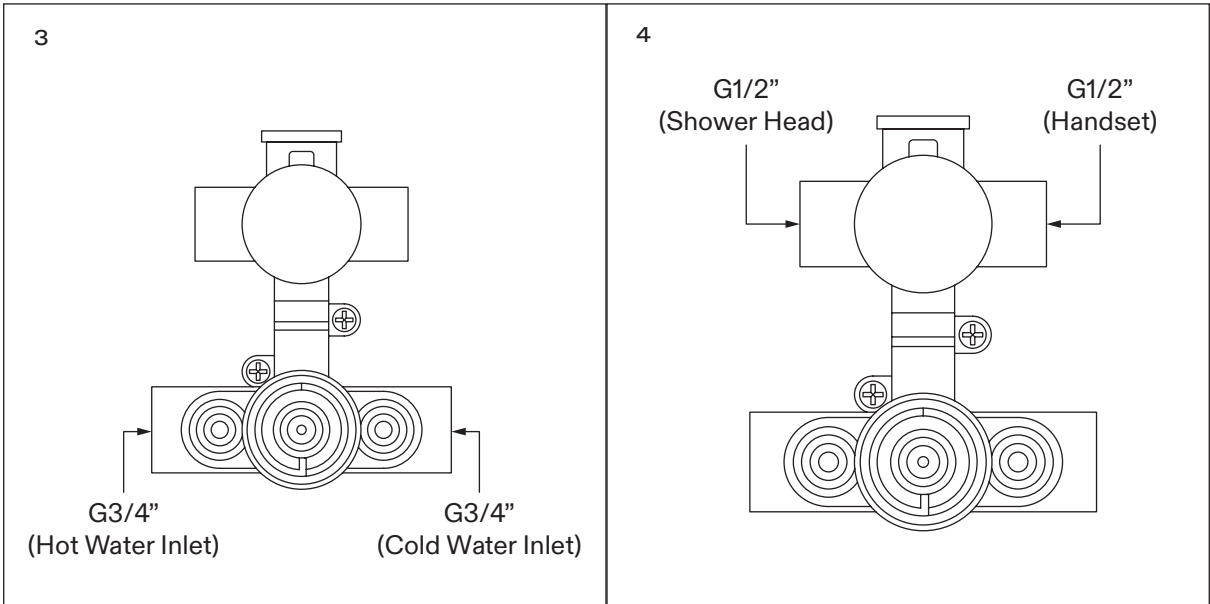
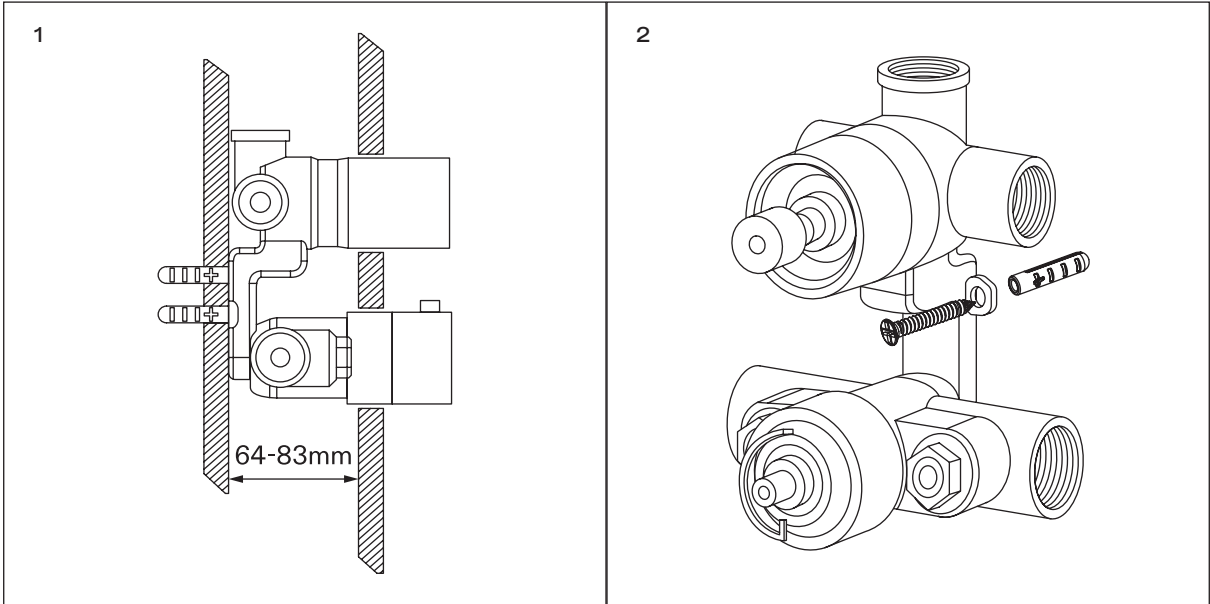
INSTALLATION STEPS

Before installation, please note that this shower has been specifically designed for concealed wall installation only. For a seamless result and optimal performance, we recommend installation is carried out by a fully qualified plumber.

This product is suitable for use with all boiler systems, including pumped, gravity, and combination boilers, up to a maximum operating pressure of 5 bar. Where water pressure exceeds this level, the use of pressure-reducing valves may be required.

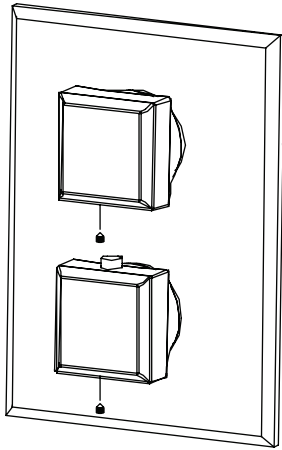
Please ensure that the plumbing system is thoroughly flushed as part of the installation process. Failure to do so will invalidate the product guarantee. The product must also be fully tested prior to tiling, plastering, or final wall finishes. Lusso cannot accept responsibility for any costs incurred should removal be required due to a fault identified after finishing works have been completed.

- 1 Prepare a recessed cavity within the wall to accommodate the valve, ensuring a depth between 64mm and 83mm.
- 2 Secure the valve into position using the supplied bolts and screws, confirming that it is firmly fixed and free from movement once installed.
- 3 Connect the hot and cold water supplies to the corresponding inlets.
- 4 Complete the plumbing connections to the outlets, then restore the water supply and carefully check for any leaks.
- 5 Proceed with tiling or wall finishing, ensuring the valve protection sleeves remain in place throughout. Once complete, remove the sleeves.
- 6 Carefully slide the backplate over the valve while pressing the temperature lever button, taking care to avoid contact that could mark the finish. If required, a small amount of water may be applied to the edge of the backplate to assist smooth fitting.
- 7 Install the diverter lever, ensuring the indicators are facing upward. Do not operate the lever until the shower installation is fully complete.
- 8 Finally, install the outlet components to complete the installation.

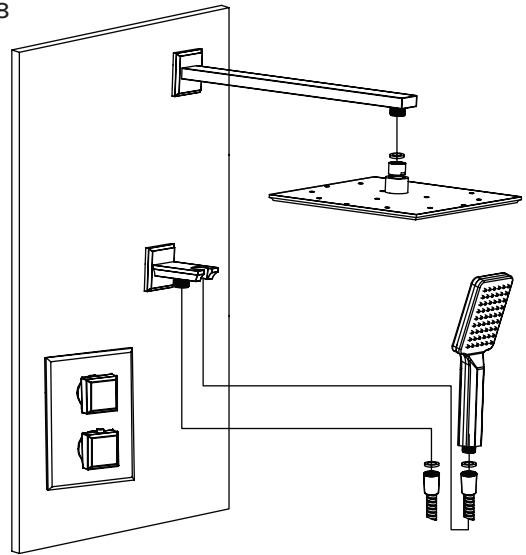


CONTINUED OVERLEAF

7



8



TROUBLESHOOTING

Why is the shower producing hot water when cold is selected, and vice versa?

This is most commonly caused by the hot and cold water supplies being connected incorrectly. Please check the pipework and amend the connections as required.

Why is the shower only running either hot water or cold water, but not both?

This may occur if the lever positioning ring has not been installed or aligned correctly. Ensure that the lug section is positioned vertically upward.

Why is there a leak from the valve when it's in the off position?

This is typically the result of debris within the diverter valve. The valve will need to be carefully cleaned to remove any obstructions.

What could cause a fluctuating flow rate or low/no flow from the valve?

This may be caused by a blockage within the system or by operating conditions that fall outside the recommended parameters.

Why is there a vibrating/buzzing noise coming from the valve?

This can occur if the water pressure exceeds 5 bar or falls below 0.5 bar, or if debris is present within the valve due to insufficient flushing of the pipework prior to installation.

CARE INSTRUCTIONS

To clean and maintain the flawless finish of this product, please follow the below instructions. Improper maintenance will void your product guarantee.

- ✓ Rinse the surface of the shower with clean water.
- ✓ Dry with a soft cloth.
- ✓ Use a neutral cleanser without coarse grain powder to remove surface marks.

- ✗ Do not use acidic cleansers.
- ✗ Do not use abrasive cleansers or cloths.

Go to Lusso.com to activate your guarantee.

LUSO

Customer Care: 020 3370 4057

International: +44 20 3370 4057