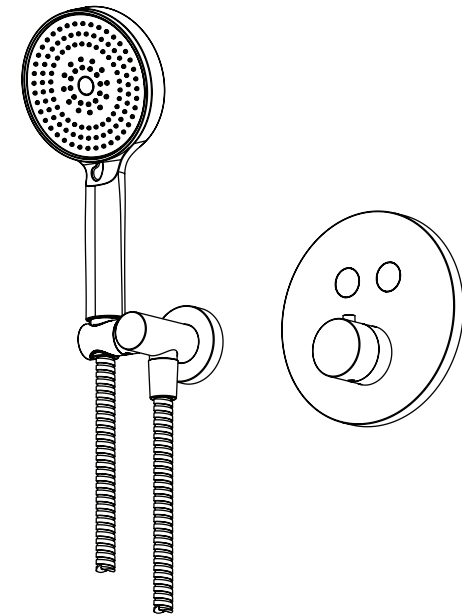
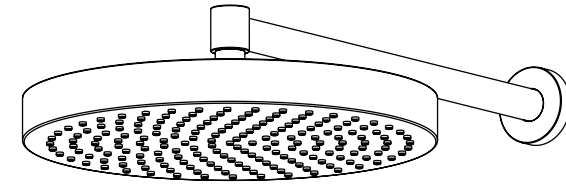


ACQUAVITA

LUS200

PUSH BUTTON RAINFALL SHOWER



LUSO

Customer Care: 020 3370 4057
International: +44 20 3370 4057

EN
INSTALLATION
AND CARE GUIDE

Please retain for future reference

LUSO

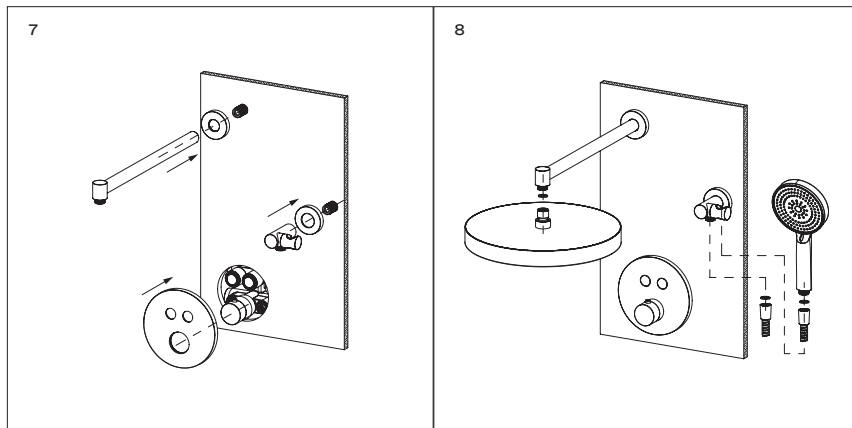
CARE INSTRUCTIONS

To clean and maintain the flawless finish of this product, please follow the below instructions. Improper maintenance will void your product guarantee.

- ✓ Rinse the surface of the shower with clean water.
- ✓ Dry with a soft cloth.
- ✓ Use a neutral cleanser without coarse grain powder to remove surface marks.

- ✗ Do not use acidic cleansers.
- ✗ Do not use abrasive cleansers or cloths.

Go to Lusso.com to activate your guarantee.



INTRODUCTION

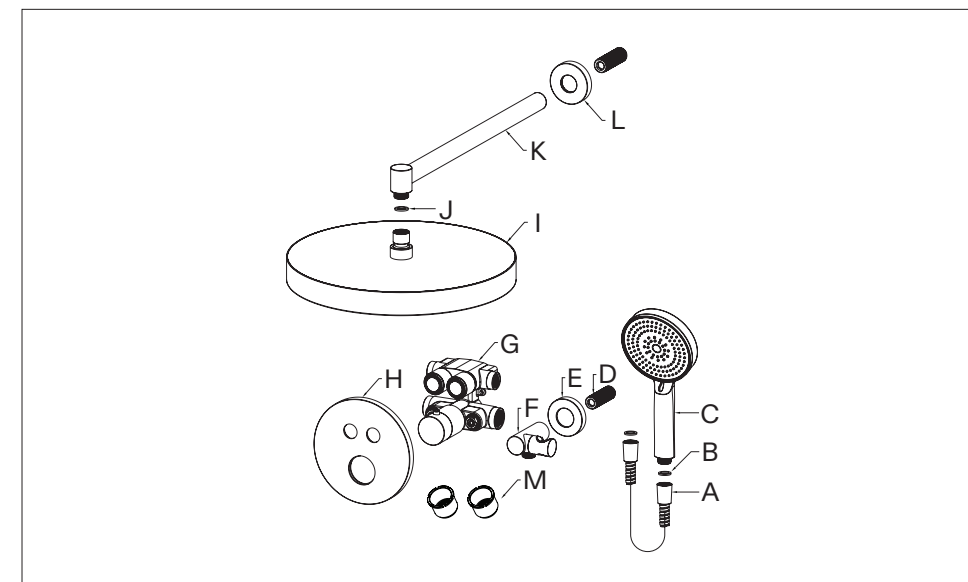
Thank you for purchasing the Acquavita Push Button Rainfall Shower.

Please read this guide carefully before installing, using and cleaning this product, and retain it for future reference. Please also note that this shower has been fully tested before being dispatched, which may mean there is water residue on some of the parts.

If you have any queries in relation to this product or guide, please contact our Customer Service team on 020 3370 4057.

PRODUCT KIT

- | | | | |
|----------|--------------------|----------|----------------------|
| A | Hose | H | Front Plate |
| B | Rubber Gasket (x2) | I | Shower Head |
| C | Handset | J | Rubber Gasket |
| D | Male Coupling (x2) | K | Shower Arm |
| E | Decorative Ring | L | Decorative Ring |
| F | Handset Bracket | M | Guiding Sleeves (x2) |
| G | Valve | | |



INSTALLATION STEPS

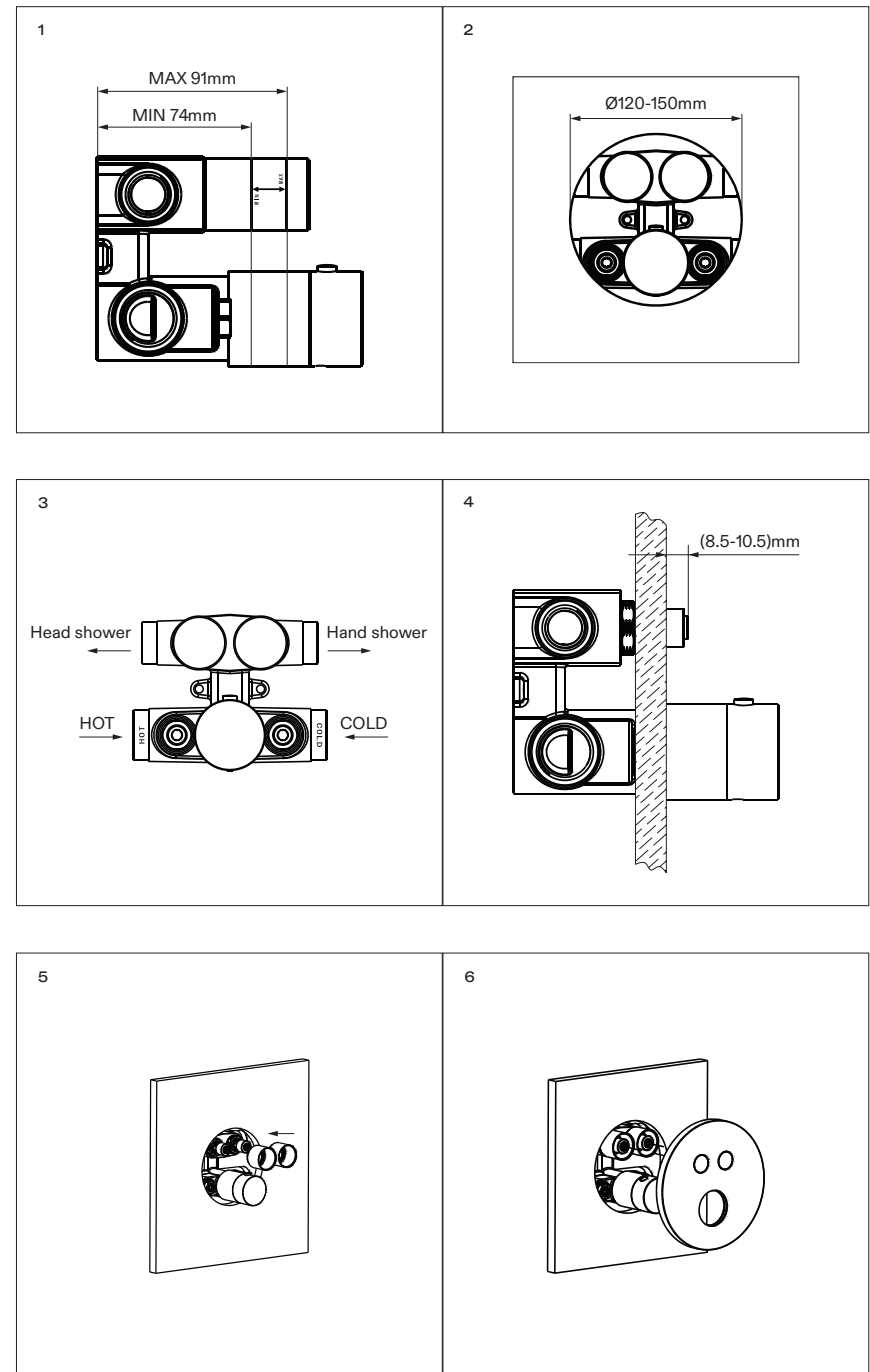
Please note that this shower is designed for wall mounting only, and we recommend that it is installed by a fully qualified plumber.

It is suitable for use on all boiler systems including pumped, gravity and combination boilers with a minimum water supply pressure of 0.5 bar and a maximum pressure of 5 bar - pressure above this may require the fitting of reducer valves. We recommend a water supply pressure of 3 bar. Additionally, to prevent an unstable flow and temperature, please ensure that the pressure difference between cold and hot water supply is less than 2 bar.

The minimum hot water supply temperature is 50°C and the maximum temperature is 70 °C. We recommend a hot water supply temperature between 55°C to 65°C. The thermostatic temperature for installation should be 38°C.

Please also note that failure to flush your plumbing system as part of the installation process will void the product guarantee. In addition, you must fully test the product before tiling and/or plastering, etc as Lusso will not be held responsible for any costs involved in the removal of the shower if you find there is a fault.

- 1 Determine the pre-install depth of the valve - this should be between 74mm to 91mm.
- 2 Cut a hole into the wall with a diameter between 120mm and 150mm and then install the valve.
- 3 Connect the pipework to the water inlets and outlets.
- 4 Remove the protective sleeve from the buttons. Next, adjust the position of the guiding sleeves on the buttons to ensure that the distance from the sleeves to the wall is between 8.5mm and 10.5mm.
- 5 Tighten the guiding sleeves in a clockwise direction.
- 6 Press the button on the handle, and turn the handle anticlockwise until the button is either positioned lower than the temperature handle or sits flush to the handle. Next, fit the front plate to the valve.
- 7 Install the shower and handset bracket.
- 8 Finally, connect the outlet parts to complete the installation.



CONTINUED OVERLEAF